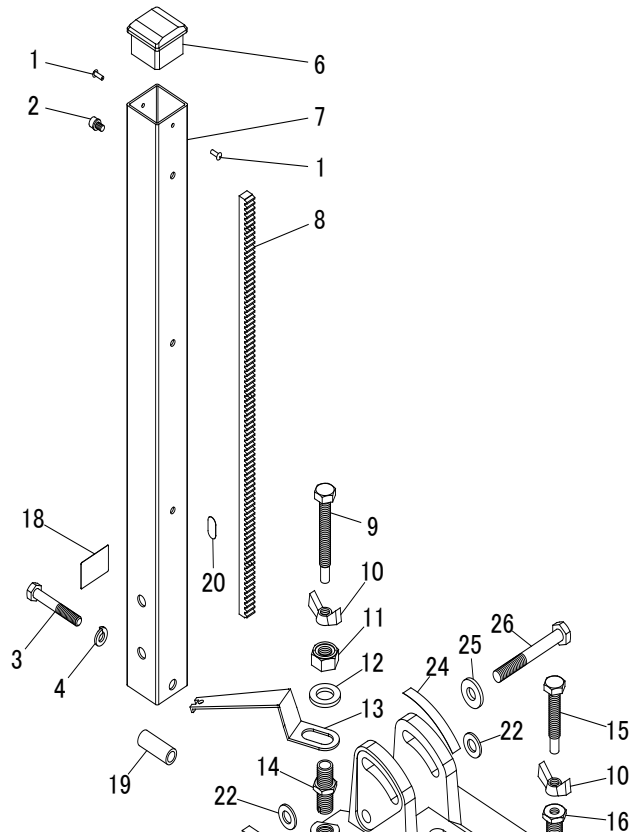
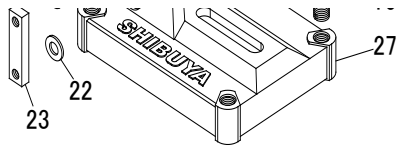


AB42 SWIVEL BASE AND COLUMN 560L AND 800L SPARE PARTS PRICE LIST WITH PRICE

2019/10/16

POS	PART NAME	NOTE	QTY	CPT CODE	Compatibility with TS-092 AB42 & Column
1	RIVET (AL)	NSA 4-4	2	042108	YES
2	HEX SOCKET BOLT W/SW	M5 × 8	4	043564	YES
3	HEX. BOLT	M8 × 55	2	043557	YES
4	SPRING WASHER	2-8	2	000283	YES
6	TOP PLATE		1	052001	YES (Color is changed)
7	COLUMN (800L)		1	043586	YES
	COLUMN (560L)		1	043584	YES
8	RACK (800L)		1	043589	YES
	RACK (560L)		1	043563	YES
9	LEVELING BOLT(F) M10		2	043555	YES
10	FLANGE NUT	2-M10	4	042096	YES
11	U-NUT	1-M14 × 1.5	2	043568	YES
12	PLAIN WASHER	POLISHED ROUND 14	2	043569	YES
13	BEAM		2	043570	YES
14	HEX BOSS(F) M10		2	043553	YES
15	LEVELING BOLT(R) M10		2	043556	YES
16	HEX BOSS(R) M10		2	043554	YES
18	WEIGHT LABEL		1		
19	PIPE BOSS		1	043865	YES
20	INDICATION LABEL		1	000732	YES
22	PLAIN WASHER	POLISHED ROUND 10	3	001520	YES
23	PLATE 40		1	006024	YES
24	ANGLE SCALE		1	006021	YES
25	WASHER	W3/8(t3.2)	1	006022	YES
26	HEX. BOLT	M10 × 80(10.9)	2	006023	YES
27	BASE PLATE		1	043579	YES
	AB42 SWIVEL BASE CPL.			043577	YES
	COLUMN CPL. 800L FOR AB42			052512	YES
	COLUMN CPL. 560L FOR AB42			052511	YES

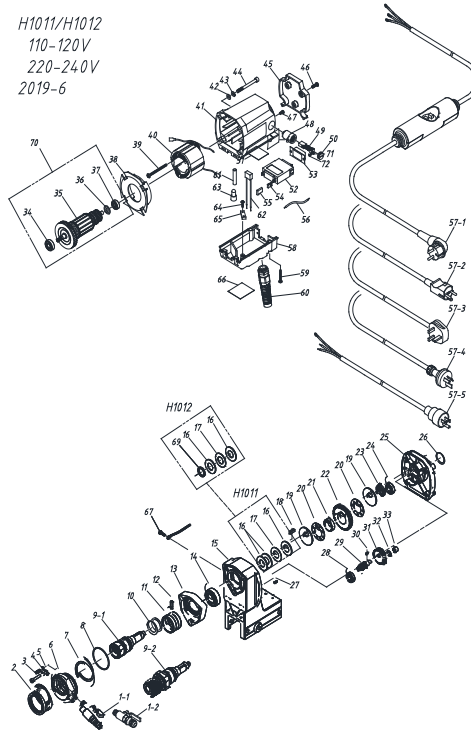




H1011 110-120V/220-240V SPARE PARTS PRICE LIST WITH PRICE

POS	PART NAME	NOTE	QTY	DPT CODE	Compatibility with R1011
1-1	WATER COOK-SHIBUYA	1/4-φ18	1	000981	YES
1-2	WATER COOK GARDENA		1	044137	YES
2	OIL SEAL	HMSA2257 (SUS)	2	042178	YES
3	HEX SOCKET BOLT	M5 x 25	3	042179	YES
4	SPRING WASHER	5	3	042180	YES
5	SUPPORT RING		3	043872	YES
6	SWIVEL RING		1	051907	YES (Color is changed)
7	SNAP RING	SA60	1	043874	YES
8	O-RING	SS3	1	043875	YES
9-1	SPINDLE (G1/2)		1	043908	YES
9-2	SPINDLE (A)		1	043909	YES
10	O-RING	P28	2	000970	YES
11	SEAL RING		1	042129	YES
12	SPRING PIN	6 x 12AW (SUS)	1	000904	YES
13	FIXING RING		1	051908	YES (Color is changed)
14	BALL BEARING	6004DDU	1	001701	YES
15	DRILL HEAD CHASSIS		1	051909	YES (Color is changed)
16	SPRING PLATE	MSD18-2	2	000014	YES
17	SPRING PLATE	MSD18-1	1	000015	YES
18	PARALLEL KEY	5 x 8 x 15	1	008118	YES
19	CLUTCH		2	043878	YES
20	WASHER		2	042146	YES
21	METAL		1	043880	YES
22-1	NO.4 GEAR	H1011	1	043881	YES
23	FU NUT	FU03SC	1	006521	YES
24	BALL BEARING	6000ZZ	1	000112	YES
25	BALL BEARING COVER		1	051912	YES (Color is changed)
26	O-RING	S26	1	043883	YES
27	PARALLEL PIN	B4 x 10	1	005449	YES
28	BALL BEARING	609ZZ	1	041724	YES
29-1	NO.3 GEAR	H1011	1	043884	YES
30	PARALLEL KEY	3 x 2 x 8	1	043889	YES
31	NO.2 GEAR		1	043896	YES
32	SHM RING	SP-007050	1	043887	YES
33	NEEDLE BEARING	TLA 792	1	043888	YES
34	BALL BEARING	6000DDW	1	043889	YES
35-1	ARMATURE 220-240V		1		
35-2	ARMATURE 110-120V		1		
36	COLLAR		1	043891	YES
37	BALL BEARING	608VV	1	043892	YES
38	FAN CASING		1	043893	YES
39	TAPPING SCREW PANHEAD	5 x 40	2	042154	YES
40-1	FIELD COIL 220-240V		1	052953	NO
40-2	FIELD COIL 100-120V		1	043894	NO
41	MOTOR HOUSING		1	051914	YES (Color is changed)
42	WASHER	ROUND 6	4	042157	YES
43	SPRING WASHER	2-6	4	042158	YES
44	HEX SOCKET BOLT	M6 x 55	4	042159	YES
45	TAIL COVER		1	051915	YES (Color is changed)
46	TAPPING SCREW PANHEAD	5 x 16	2	043897	YES
47	TAPPING SCREW PANHEAD	4 x 10	2	005498	YES
48	BRUSH HOLDER		2	043898	YES
49	CARBON BRUSH		2	043899	YES
50	BRUSH COVER		2	043900	YES
51-1	MOTOR NAME PLATE (IN) 220-240V		1		
51-2	MOTOR NAME PLATE (IN) 110-120V		1		
52-1	CIRCUIT PROTECTOR 220-240V	NRAR100-7-5AAA	1	001843	NO
52-2	CIRCUIT PROTECTOR 110-120V	NRAR100-15AAA	1	001844	NO
53	DUST COVER	NRAR	1	000131	NO
54	PASTER TERMINAL FLAG 250		2	043124	NO
55	GAP FLAG 250		2	043125	NO
56	LEAD WIRE		2	000950	YES
57-1	PLUG WITH CABLE & PRCD	220-240V EU/ASA	1	042218	YES
57-2	PLUG WITH CABLE & PRCD	220-240V DK	1	042783	YES
57-3	PLUG WITH CABLE & PRCD	220-240V SA	1	050972	YES
57-4	PLUG WITH CABLE & PRCD	220-240V AU	1	051174	YES
57-5	PLUG WITH CABLE	110-120V US/TW	1	042781	YES
58	SWITCH BOX		1	051917	NO
59	SCREW PANHEAD B TIGHT	4 x 30	2	042171	YES
60	CABLE SLEEVE		1	042990	YES
61	INSULATION TUBE	φ8 x 40	1	042174	YES
62	CONDENSER	0.1 μ F	1	000958	YES
63	CLOSED-END CONNECTOR	5.5SD	2	000955	YES
64	TAPPING SCREW PANHEAD	4 x 16	2	005495	YES
65	CORD FIXER		1	042177	YES
66-1	MOTOR NAME PLATE (OUT) 220-240V		1		
66-2	MOTOR NAME PLATE (OUT) 110-120V		1		
67	SCREW PANHEAD W/SW	M4 x 10	1	000990	YES
68	LABEL		1	052182	NO
70-1	ARMATURE ASSY 220-240V	24-35-39-37	1	052592	NO
70-2	ARMATURE ASSY 110-120V	24-35-39-37	1	052591	NO
71	SCREW PANHEAD W/SW	M3 x 8	2	043953	NO
72	WASHER	5	2	043954	NO

H1011/H1012
110-120V
220-240V
2019-6



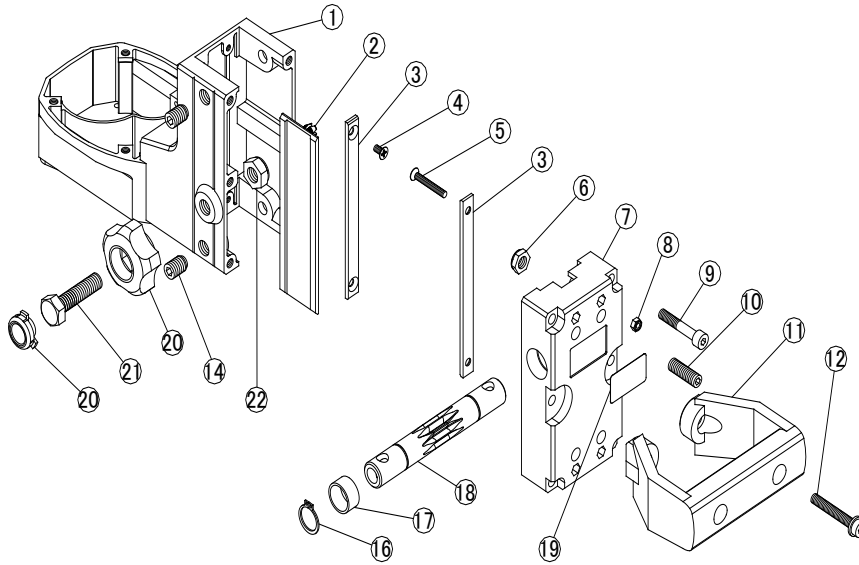
H1012 (2000rpm) : Following parts are different from H1011.

POS	PART NAME	NOTE	QTY	DPT CODE	Compatibility with R1012
16	SPRING PLATE	MSD18-2	2	000014	YES
22-2	NO.4 GEAR	H1012	1	043908	YES
29-2	NO.3 GEAR	H1012	1	043907	YES
51-3	MOTOR NAME PLATE (IN) 220-240V	H1012	1		
51-4	MOTOR NAME PLATE (IN) 110-120V	H1012	1		
66-3	MOTOR NAME PLATE (OUT) 220-240V	H1012	1		
66-4	MOTOR NAME PLATE (OUT) 110-120V	H1012	1		
69	RING		1	042678	YES

CARRIAGE BLOCK FOR H1011/H1012 SPARE PARTS PRICE LIST WITH PRICE

2019/10/16

POS	PART NAME	NOTE	QTY	CPT CODE	Compatibility with TS-092 C.B.
1	DRILL HEAD CHASSIS		1	051909	YES (Color is changed)
2	SLIDE PLATE		1	043535	YES
3	ADJUSTMENT PLATE 1		4	043532	YES
4	TRUSS HEAD SCREW	M4 × 8	4	043533	YES
5	TRUSS HEAD SCREW	M4 × 30	4	001815	YES
6	U-NUT	M8-3	4	043293	YES
7	BACK COVER		1	043537	YES
8	NYLON NUT	M4	4	000481	YES
9	HEX. SOCKET BOLT	M6 × 35	4	043540	YES
10	CYLINDRICAL SCREW	M8 × 25	4	043538	YES
11	GRIP HANDLE		1	043539	YES
12	HEX. SOCKET BOLT FLANGED	M6 × 40	2	043541	YES
14	CYLINDRICAL SCR W/PAD	M10 × 12	2	043536	YES
16	SNAP RING-C	17	2	000272	YES
17	RING BUSH		2	043544	YES
18	WORM GEAR SHAFT		1	043542	YES
19	LABEL		1		
20	STOPPER KNOB	M10	1	042268	YES
21	HEX. BOLT	M10 × 40 (COPPER)	1	042267	YES
22	U-NUT	3-M10	2	043045	YES



QUICK RELEASE HANDLE FOR H1011/H1012 SPARE PARTS PRICE LIST WI 2019/10/16

POS	PART NAME	NOTE	QTY	UNIT PRICE
1	Q.R. HANDLE CPL. (AL)		1	3615
2	Q.R. HANDLE (AL) L150 W/O RETAINER		1	2885
3	RETAINER COMPLETE		1	730
4	GRIP BALL DIA. 45		2	180
5	THREADED BOLT	M12 × 40	2	85
6	SCREW	M5 × 6(SUS)	1	15
7	SPRING		1	515
8	PIN		1	210
9	HANDLE BODY (AL)		1	1960
10	HANDLE ROD (AL) L150		1	695

NOTE: No change.

