

H1521 110-120V/220-240V SPARE PARTS PRICE LIST WITH PRI 2019/9/27

Compatibility with R1521/R1522

POS	PART NAME	NOTE	QTY	CPT CODE	
1-1	WATER COCK-GARDENA		1	044137	YES
1-2	WATER COCK-SHIBUYA	1/4-φ16	1	000061	YES
2	OIL SEAL	HMSA42557(SUS)	2	042178	YES
3	HEX. SOCKET BOLT	M5 × 25	3	042179	YES
4	SPRING WASHER	5	3	042180	YES
6	SWIVEL RING		1	051922	YES (Color is changed)
7	SNAP RING	SA63	1	005085	YES
8	O-RING	S55	1	042182	YES
9	FIXING RING		1	051923	YES (Color is changed)
10-1	SPINDLE (U)		1	042237	YES
10-2	SPINDLE (A)		1	042236	YES
11	O-RING	P28	2	000070	YES
12	SEAL RING		1	042139	YES
13	SPRING PIN	6 × 12AW(SUS)	1	000004	YES
14	BALL BEARING	6005DDU	1	001694	YES
15	BALL BEARING	6005ZZ	1	041710	YES
16	SNAP RING-C	25	2	000689	YES
17	GEAR CASE		1	051932	YES (Color is changed)
18	SHIFT POSTION STICKER		1	042186	YES
19	PLATE		1	042187	YES
20	SCREW COUNTERSUNK	M4 × 10	2	000712	YES
21	STRIPPER BOLT	MSB6.5-20	1	006509	YES
22	COIL SPRING		1	000171	YES
23	KNOB		1	043060	YES
24	PARARREL PIN	A5 × 10	1	006559	YES
25	O-RING	P8	1	042190	YES
26	GEAR CHANGE SHAFT		1	042191	YES
27	LEVER		1	042192	YES
28	U-NUT FLANGED	M5	1	042193	YES
29	SHIM RING		2	042194	YES
30	METAL		1	042195	YES
31	NO.6 GEAR		1	042196	YES
32	NEEDLE ROLLER	AVAILABLE AS POS.#85 CODE #042700			YES
33	CLUTCH NO.3	CLUTCH NO.3 WITH ROLLERS			YES
34	SHIM RING		2	042199	YES
35	METAL		1	042200	YES
36-1	NO.4 GEAR	H1521	1	042201	YES
37	SNAP RING-C	17	1	000272	YES
38	BALL BEARING	6201ZZ	2	000028	YES
39-1	NO.3-5 GEAR	H1521	1	042203	YES
40	SPRING PLATE	MDS18-2	2	000014	YES
41	PARARREL KEY	5 × 5 × 15	1	008118	YES
42	CLUTCH		2	042145	YES
43	WASHER		2	042146	YES
44	METAL		1	042147	YES

45	NO.2 GEAR		1	042148	YES
46	TWIN FU NUT	TFU03SC	1	041776	YES
47	BALL BEARING	6200ZZ	1	000030	YES
49	BALL BEARING COVER		1	051936	YES (Color is changed)

H1521 110-120V/220-240V SPARE PARTS PRICE LIST WITH PRICE 2/2

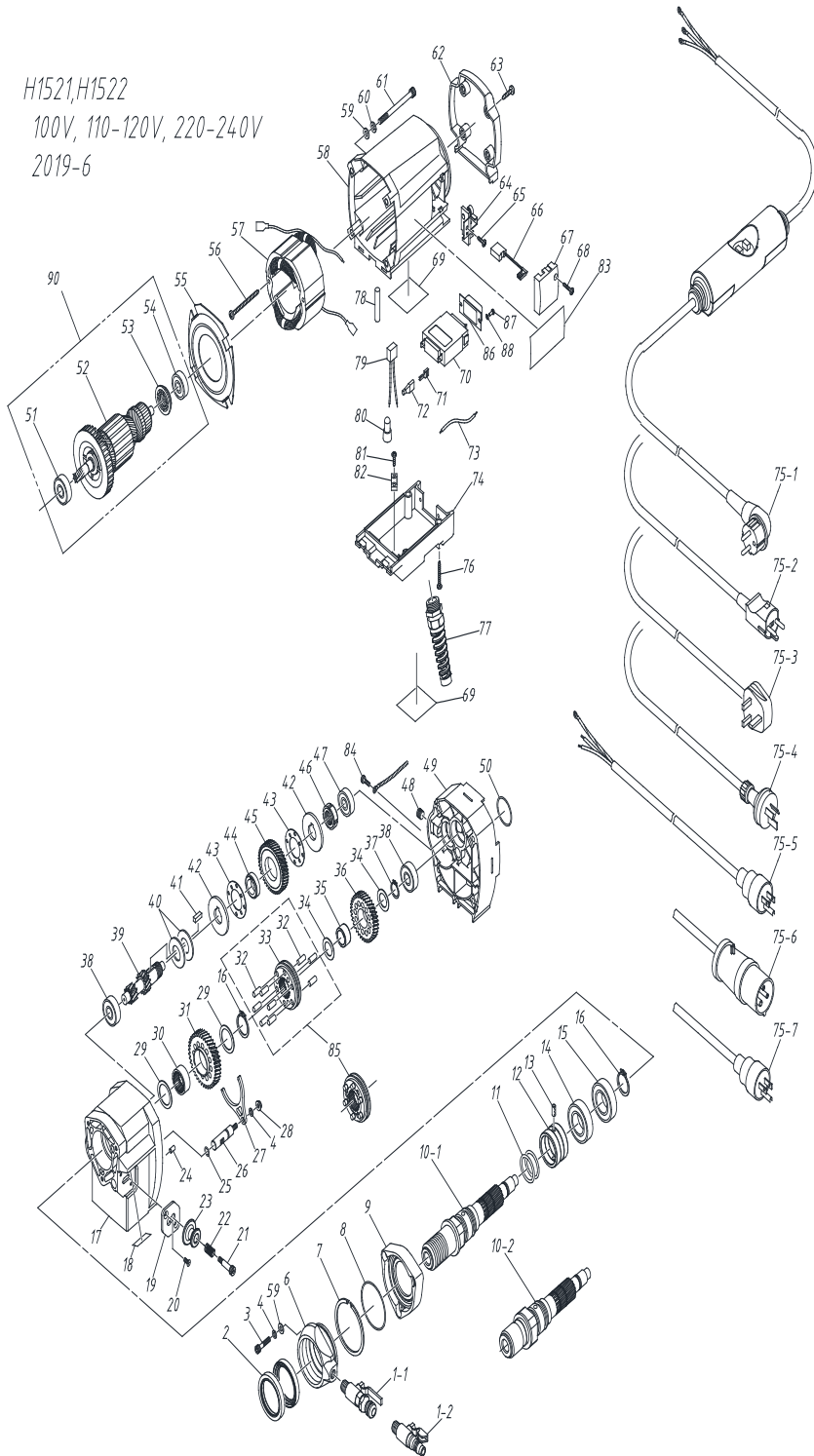
POS	PART NAME	NOTE	QTY	CPT CODE	Compatibility with R1521/R1522
50	O-RING	S32	1	005389	YES
51	BALL BEARING	6201DDW	1	042150	YES
52-1	ARMATURE 220-240V		1		
52-2	ARMATURE 110-120V		1		
52-3	ARMATURE 100V		1		
53	COLLAR		1	042152	YES
54	BALL BEARING	6200DDW	1	045620	YES
55	FAN CASING		1	042153	YES
56	TAPPING SCREW PANHEAD	5 × 60	2	042154	YES
57-1	FIELD COIL 220-240V		1	052585	NO
57-2	FIELD COIL 110-120V		1	052568	NO
57-3	FIELD COIL 100V		1	042155	YES
58	MOTOR HOUSING		1	051927	YES (Color is changed)
59	WASHER	ROUND 6	7	042157	YES
60	SPRING WASHER	2-6	4	042158	YES
61	HEX. SOCKET BOLT	M6 × 75	4	042212	YES
62	TAIL COVER		1	051928	YES (Color is changed)
63	TAPPING SCREW PANHEAD	5 × 20	4	042161	YES
64	BRUSH HOLDER		2	042162	YES
65	SCREW TRUSS PC	4 × 14	2	042163	YES
66	CARBON BRUSH		2	049626	YES
67	BRUSH COVER		2	051929	YES (Color is changed)
68	TAPPING SCREW PANHEAD	4 × 20	2	042166	YES
69-1	MOTOR NAME PLATE 220-240V		2		
69-2	MOTOR NAME PLATE 110-120V		2		
69-3	MOTOR NAME PLATE 110V		2		
69-4	MOTOR NAME PLATE 100V		2		
70-1	CIRCUIT PROTECTOR 220-240V	NRAR1100-10AAA	1	005128	NO
70-2	CIRCUIT PROTECTOR 110-120V	NRAR1100-15AAA	1	001944	NO
70-3	CIRCUIT PROTECTOR 100V	NRAR1100-22ADA	1	051759	YES
71	FASTEN TERMINAL		2	000057	YES
72	CAP		2	000056	YES
73	LEAD WIRE		1	000060	YES
74	SWITCH BOX		1	051931	NO
75-1	PLUG WITH CABLE & PRCD	220-240V EU/ASIA	1	042218	YES
75-2	PLUG WITH CABLE & PRCD	220-240V DK	1	042783	YES
75-3	PLUG WITH CABLE & PRCD	220-240V SA	1	050972	YES
75-4	PLUG WITH CABLE & PRCD	220-240V AU	1	051174	YES
75-5	PLUG WITH CABLE	110-120V US	1	042781	YES

75-6	PLUG WITH CABLE	110V UK	1	042219	YES
75-7	PLUG WITH CABLE	100V TW	1	004642	YES
76	SCREW HANHEAD B TIGHT	4 × 30	2	042171	YES
77	CABLE SLEEVE		1	052825	NO
78	INSULATION TUBE	φ 8 × 40	1	042174	YES
79	CONDENSER	0.1 μ F	1	000059	YES
80	CLOSED-END CONNECTOR	5.5SD	2	000055	YES
81	TAPPING SCREW PANHEAD	4 × 16	2	005495	YES
82	CORD FIXER		1	042177	YES
83	LABEL		1	052181	NO
84	SCREW PANHEAD W/SW	M4 × 10 / (QTY 0 FOR TW)	1	000690	YES
85	CLUTCH NO.3 WITH ROLLERS		1	042700	YES
86	DUST COVER	NRAR	1	000131	NO
87	SCREW PANHEAD W/SW	M3 × 8	2	043093	NO
88	WASHER	3	2	043094	NO
90-1	ARMATURE ASSY 220-240V	51+52+53+54	1	052584	NO
90-2	ARMATURE ASSY 110-120V	51+52+53+54	1	052567	NO
90-3	ARMATURE ASSY 100V	51+52+53+54	1	052494	NO

H1522 (850/1750 min^{-1}) * Following parts are different from H1521.

POS	PART NAME	NOTE	QTY	CPT CODE	Compatibility with R1521/R1522
36-2	NO. 4 GEAR	H1522	1	042239	YES
39-2	NO. 3-5 GEAR	H1522	1	042238	YES
69-4	MOTOR NAME PLATE 220-2	H1522	2		

H1521,H1522
100V, 110-120V, 220-240V
2019-6

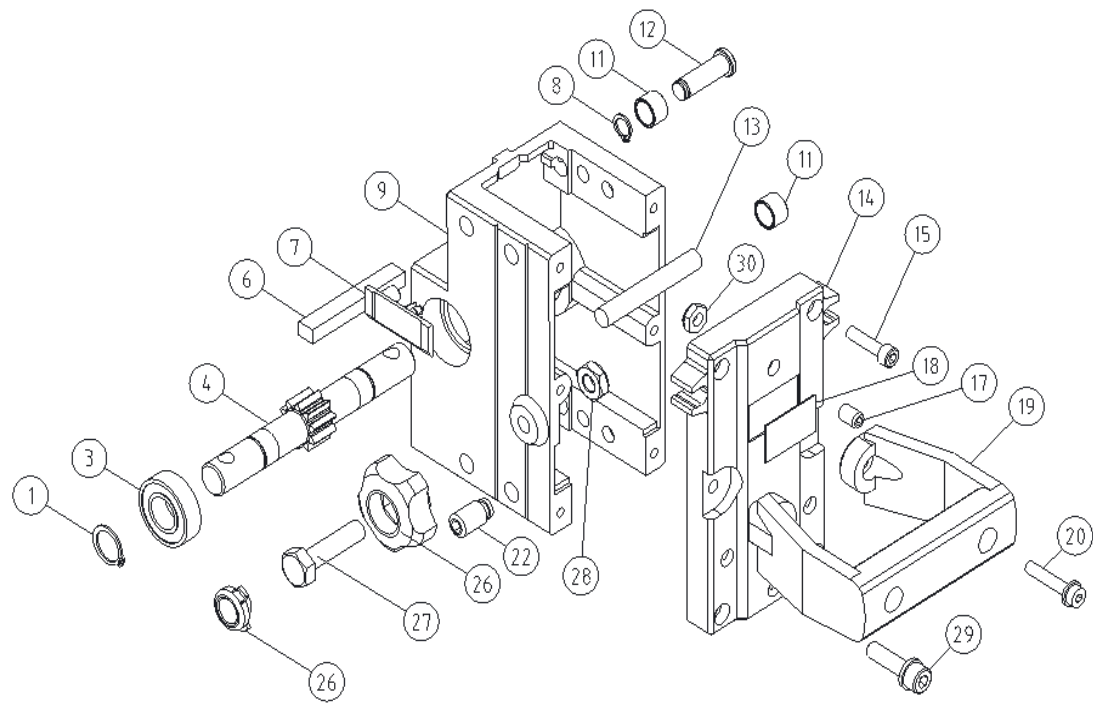


CARRIAGE BLOCK FOR H1511/H1521/H1522 SPARE PARTS LIST WITH PRICE

03.09.2019

POS	PART NAME	NOTE	QTY	CPT. CODE	Compatibility with TS-162 C.B.
1	SNAP RING-C	17	2	000272	YES
3	BALL BEARING	6003-2VU	2	048379	YES
4	PNION GEAR		1	051988	YES (See NOTE) *
6	PARALLEL KEY		1	042134	YES
7	SLIDING PLATE		2	042125	YES
8	SNAP RING-C	10	4	041411	NO
9	CARRIAGE BODY		1	052004	NO
11	ROLLER WITH BUSH		8	049273	YES
12	ROLLER SHAFT(F)		4	052005	NO
13	ROLLER SHAFT(R)		2	042129	YES
14	BACK COVER		1	042127	YES
15	HEX. SOCKET BOLT	M6 x 25	4	042131	YES
17	HEX. SOCKET SCREW	M8 x 12	2	042130	YES
18	WEIGHT LABEL		1		NO
19	GRIP HANDLE (RESIN)		1	042133	YES
20	HEX. SOCKET BOLT FLANGED	M6 x 30	2	042132	YES
22	HEX. SOCKET SCREW		2	042126	YES
26	STOPPER-KNOB	M10	1	042268	YES
27	HEX. BOLT	M10 x 40 (COPPER)	1	042267	YES
28	U-NUT	3-M10	1	043045	YES
29	HEX SOCKET BOLT W/SW	M8 x 30	3	042391	YES
30	U-NUT	3-M8	2	043293	YES
	CARRIAGE BLOCK CPL.			053019	YES

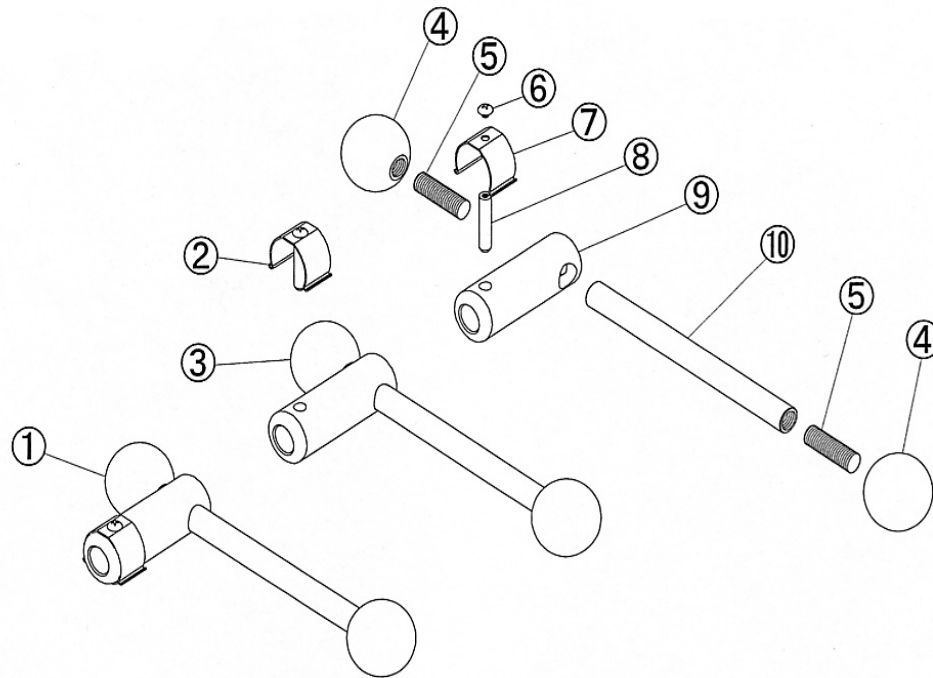
*NOTE: Attach #042121 Cover between Pos.1 Snap Ring-C and Pos.3 Ball Bearing when #042120 Pinion Gear is used.



QUICK RELEASE HANDLE SPARE PARTS LIST WITH PRICE

03.09.2019

POS	PART NAME	NOTE	QTY	CPT. CODE	Compatibility with TS-162 Q.R.Handle
1	Q.R. HANDLE CPL. (AL)		1	042076	YES
2	RETAINER COMPLETE		1	006095	YES
3	Q.R. HANDLE (AL) W/O RETAINER		1	042112	YES
4	GRIP BALL DIA. 45		2	042113	YES
5	THREADED BOLT	M12 × 40	2	042116	YES
6	SCREW	M5 × 6 (SUS)	1	006091	YES
7	SPRING		1	006092	YES
8	PIN		1	006093	YES
9	HANDLE BODY (AL)		1	042115	YES
10	HANDLE ROD (AL)		1	042114	YES

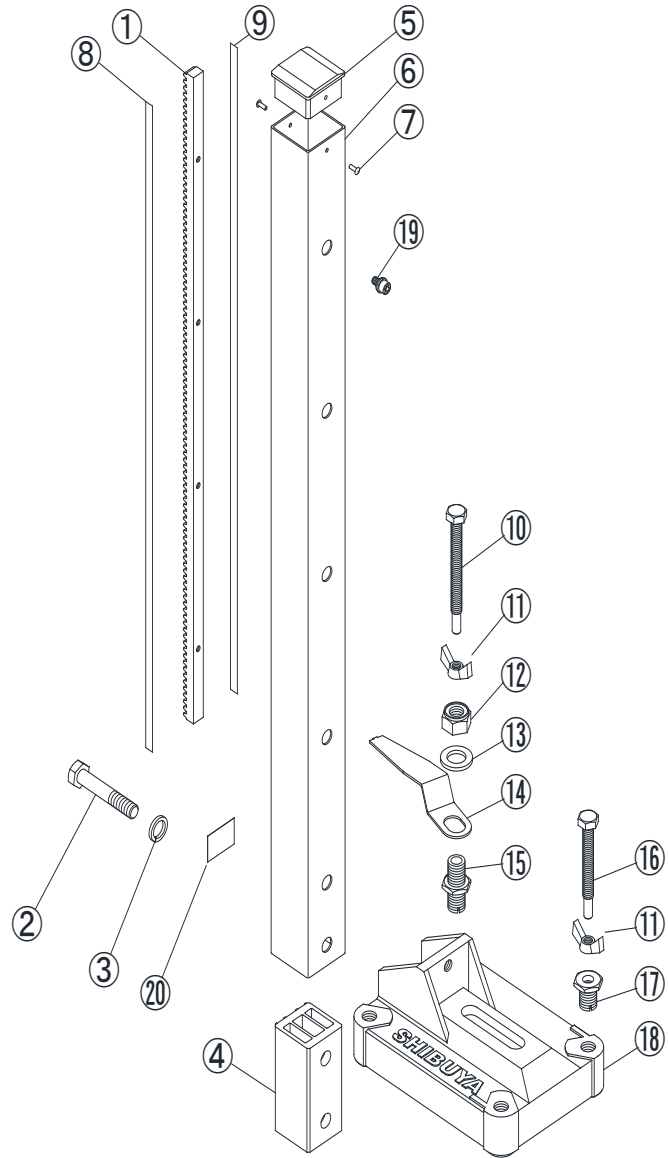


NOTE: No change.

TS-165 FIXED BASE +COLUMN 800L SPARE PARTS LIST WITH PRICE

03.09.2019

POS	PART NAME	NOTE	QTY	CPT. CODE	Compatibility with TS-162 Base & Column
1	RACK GEAR 800L		1	004688	YES
2	HEX. BOLT	M12 × 65	2	042097	YES
3	SPRING WASHER	2-12	2	042098	YES
4	INNER CORE		1	042106	YES
5	TOP PLATE		1	052016	YES (Color is changed)
6	COLUMN 800L		1	042271	YES
7	RIVET (AL)	NSA 4-4	2	042108	YES
8	DEPTH GAUGE DECAL (inch)	US VERSION ONLY	1	044497	YES
19	DEPTH GAUGE DECAL (mm)		1	000520	YES
10	LEVELING BOLT (F)		2	042094	YES
11	FLANGE NUT	2-M10	4	042096	YES
12	U-NUT	3-M16	2	042101	YES
13	PLAIN WASHER	POLISHED ROUND 16	2	042100	YES
14	BEAM		2	042099	YES
15	HEX. BOSS 2 (F)		2	042092	YES
16	LEVELING BOLT (R)		2	042095	YES
17	HEX. BOSS 2 (R)		2	042093	YES
18	BASE PLATE		1	042091	YES
19	HEX. SOCKET BOLT W/SW	M6 x 12	4	042357	YES
20	WEIGHT LABEL		1		
	COLUMN CPL. 800L		1	042269	YES
	COLUMN CPL. 800L US VERSION	US VERSION ONLY	1	051677	YES
	TS-165 BASE CPL.		1	042078	YES



AB52 SWIVEL BASE AND COLUMN L1000 SPARE PARTS LIST WITH PRICE

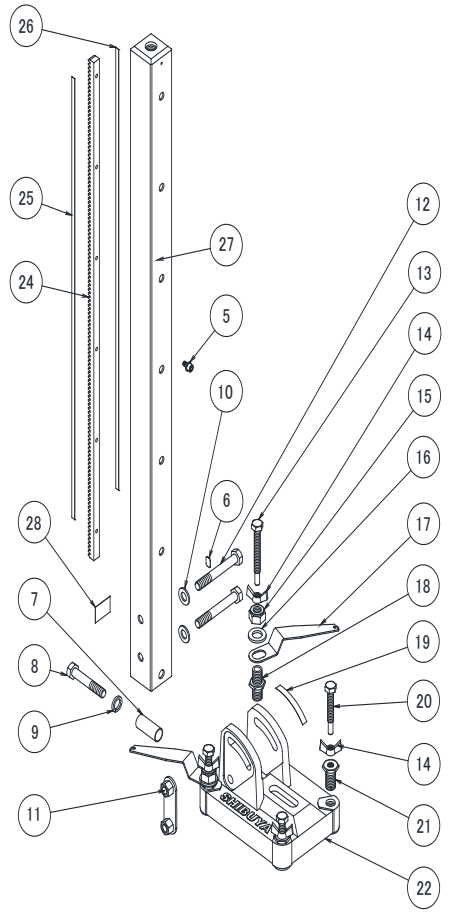
COLUMN

POS	PART NAME	NOTE	QTY	CPT CODE	Compatibility with TS-162 Column
5	HEX. SOCKET BOLT W/SW	M6 × 12	6	004672	YES
6	INDICATION LABEL		1	000732	YES
7	PIPE BOSS		1	005164	YES
24	RACK GEAR		1	004670	YES
25	DEPTH GAUGE DECAL (mm)		1	000520	YES
26	DEPTH GAUGE DECAL (inch)	US VERSION ONLY	1	044497	YES
27	COLUMN AB52 1000L M16		1	042929	YES
28	WEIGHT LABEL(AB52)		1		
	COLUMN CPL. 1000L FOR AB52		1	051682	YES
	COLUMN CPL. 1000L US VER. FOR AB52	US VERSION ONLY	1	051683	YES

BASE

POS	PART NAME	NOTE	QTY	CPT. CODE	Compatibility with old type AB52
8	HEX. BOLT	M12 × 70	1	042650	YES
9	SPRING WASHER	2-12	1	042098	YES
10	WASHER	φ 12.5 × φ 28 × t3.2	2	042826	YES (See NOTE)
11	PLATE (N)		1	052533	NO
12	HEX. BOLT	M12 × 90 (10.9)	2	042827	YES
13	LEVELING BOLT (F)		2	042094	YES
14	FLANGE NUT	2-M10	4	042096	YES
15	U-NUT	3-M16	2	042101	YES
16	PLAIN WASHER	POLISHED ROUND 16	2	042100	YES
17	BEAM		2	042099	YES
18	HEX. BOSS 2 (F)		2	042092	YES
19	ANGLE SCALE		1	006478	YES
20	LEVELING BOLT (R)		2	042095	YES
21	HEX. BOSS 2 (R)		2	042093	YES
22	BASE PLATE		1	042828	YES
	AB52 SWIVEL BASE CPL.		1	042796	YES

*NOTE : Quantity is changed from 4 to 2 pcs. Pos.11 Plate (N) does not need to use with Pos.10 Washer.



TS-165 BASE AND COLUMN 600L+200L SPARE PARTS PRICE LIST

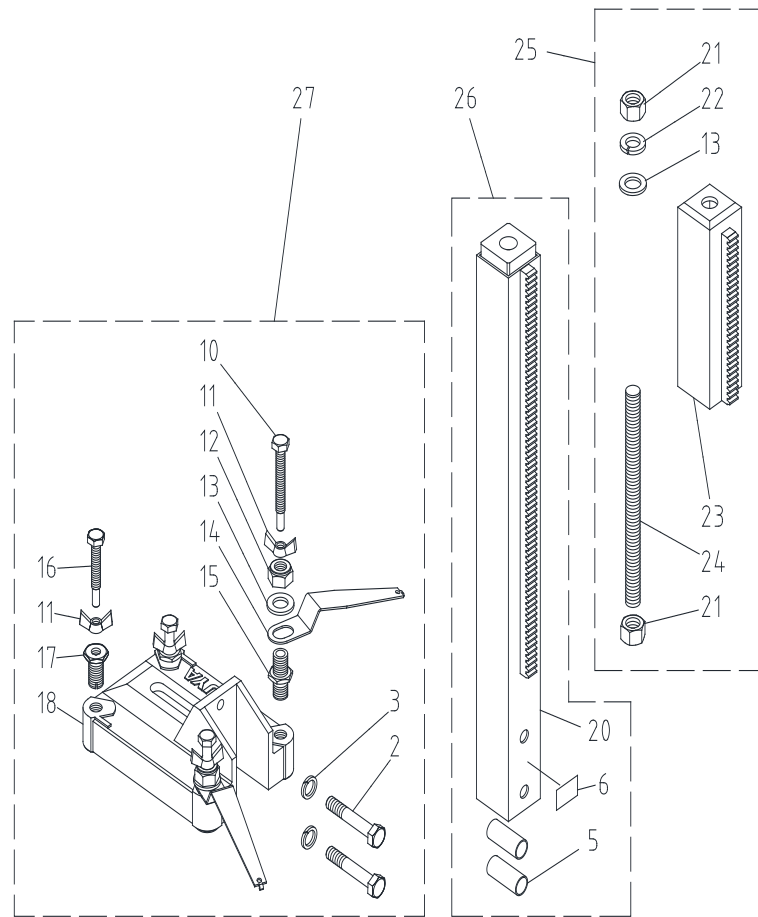
FOR BASE

03.09.2019

POS	PART NAME	NOTE	QTY	CPT CODE	Compatibility with TS-162 Base
2	HEX. BOLT	M12 × 65	2	042097	YES
3	SPRING WASHER	2-12	2	042098	YES
10	LEVELING BOLT(F)		2	042094	YES
11	FLANGE NUT	2-M10	4	042096	YES
12	U-NUT	3-M16	2	042101	YES
13	PLAIN WASHER	POLISHED ROUND 16	2	042100	YES
14	BEAM		2	042099	YES
15	HEX. BOSS 2(F)		2	042092	YES
16	LEVELING BOLT(R)		2	042095	YES
17	HEX. BOSS 2(R)		2	042093	YES
18	BASE PLATE		1	042091	YES
27	TS-165 BASE CPL.		1	042078	YES

FOR COLUMN

POS	PART NAME	NOTE	QTY	CPT CODE	Compatibility with TS-162 Column 600L
5	PIPE BOSS		2	005164	YES
6	WEIGHT LABEL		1		
20	COLUMN W/RACK		1	043474	YES
13	PLAIN WASHER	POLISHED ROUND 16	1	042100	YES
21	HEX. NUT	1-M16	2	042967	YES
22	SPRING WASHER	2-16	1	043393	YES
23	COLUMN EXTENSION		1	043475	YES
24	THREADED ROD	M16 × 230	1	043394	YES
25	EXTENSION COLUMN CPL. 200L	13+21+22+23+24	1	043484	YES
26	COLUMN CPL. 600L	5+6+20	1	043482	YES
	COLUMN CPL. 600L WITH EXTENSION 200L FOR TS-165 (POS.25+26)		1	043477	YES



AB52 SWIVEL BASE AND COLUMN 600L+200L SPARE PARTS PRICE LIST

FOR AB52 SWIVEL BASE

03.09.2019

POS	PART NAME	NOTE	QTY	CPT CODE	Compatibility with old type AB52
9	HEX. BOLT	M12 × 70	1	042650	YES
10	SPRING WASHER	6-12	1	042098	YES
11	WASHER	φ 12.5 × φ 28 × t3.2	2	042826	YES (See NOTE) *
12	PLATE (N)		1	052533	NO
13	HEX. BOLT	M12 × 90 (10.9)	2	042827	YES
14	LEVELING BOLT(F)		2	042094	YES
15	FLANGE NUT	2-M10	4	042096	YES
16	U-NUT	3-M16	2	042101	YES
17	PLAIN WASHER	POLISHED ROUND 16	2	042100	YES
18	BEAM		2	042099	YES
19	HEX. BOSS 2(F)	S408713	2	042092	YES
20	ANGLE SCALE		1	006478	YES
21	LEVELING BOLT(R)		2	042095	YES
22	HEX. BOSS 2(R)		2	042093	YES
23	BASE PLATE		1	042828	YES
35	AB52 SWIVEL BASE CPL.		1	042796	YES

*NOTE : Quantity is changed from 4 to 2 pcs. Pos.11 Plate (N) does not need to use with Pos.10 Washer.

FOR COLUMN

POS	PART NAME	NOTE	QTY	CPT CODE	Compatibility with TS-162 Column 600L
6	INDICATION LABEL		1	006477	YES
7	WEIGHT LABEL		1		
8	PIPE BOSS		1	005164	YES
28	COLUMN W/RACK FOR AB52		1	043476	YES
17	PLAIN WASHER	POLISHED ROUND 16	1	042100	YES
29	HEX. NUT	1-M16	2	042967	YES
30	SPRING WASHER	2-16	1	043393	YES
31	COLUMN EXTENSION		1	043475	YES
32	THREADED ROD	M16 × 230	1	043394	YES
33	EXTENSION COLUMN CPL. 200L	17+29+30+31+32	1	043484	YES
34	COLUMN CPL. 600L	6+7+8+28	1	043483	YES
	COLUMN CPL. 600L WITH EXTENSION 200L FOR AB52 (POS.33+34)		1	043478	YES

