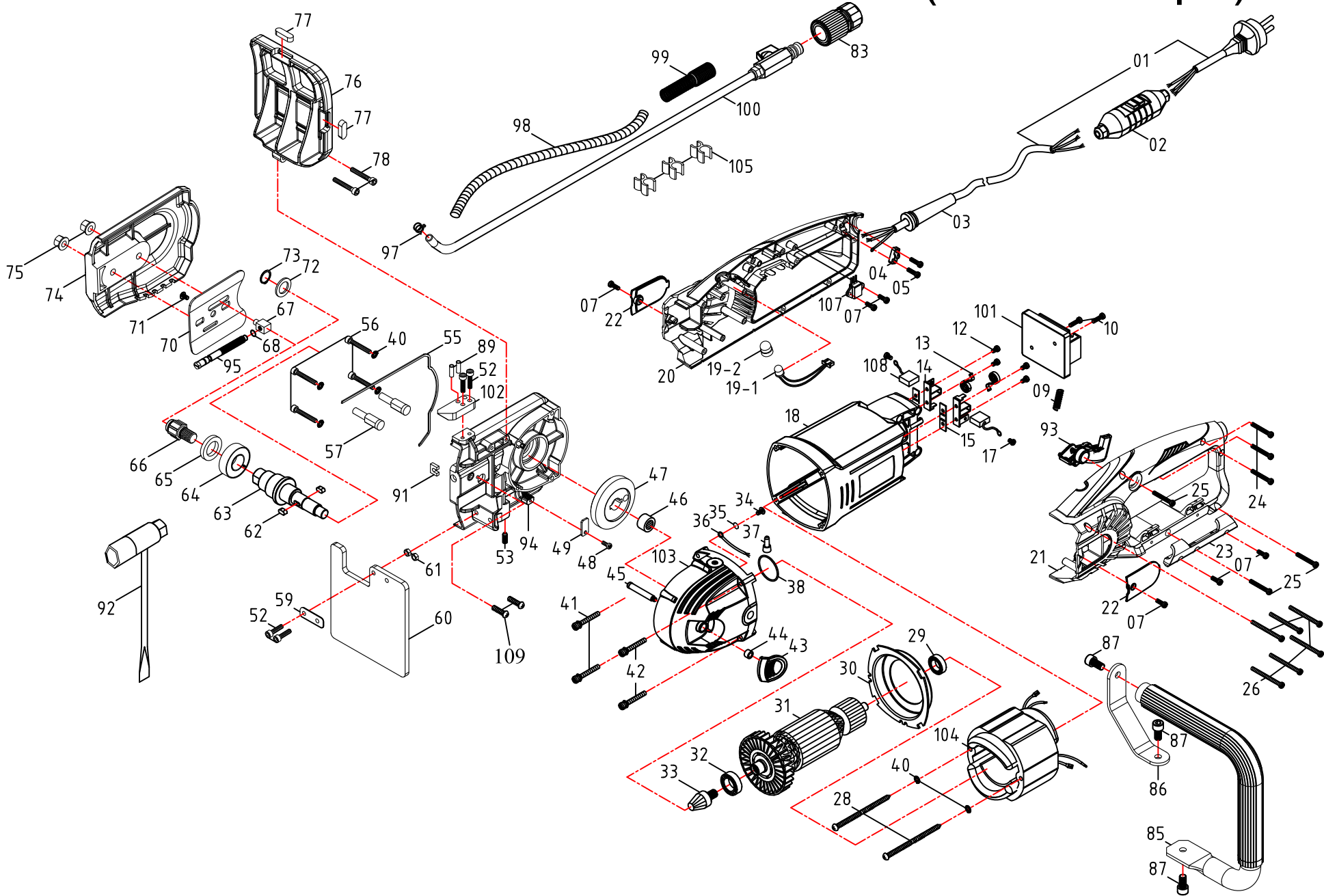


MODEL : CS11 CONCRETE CHAIN SAW (AGP Europe)



CS11-220V(10203-011-206-1004-004-026) EU

CS11 CONCRETE CHAIN SAW

Remark :

1. Warranty period is within 1 year after end-user purchase. FOC spare parts provided. Serial No., photos and description required for warranty claims.

2. Which one is "wearing part" and which one is "recommended to be kept more in

ARTICLE NO.	NO.	PARTS NAME	Q'TY	ARTICLE NO.	NO.	PARTS NAME	Q'TY
206-031503300-01	1	POWER SUPPLY CABLE (VDE-1.5x3Cx3M-H	1	403-M05045003-021	41	PANHEAD TAPPING SCREW-B-W/WASHER (M5x	2
304-03013-004-008	2	PRCD INTERRUPTER PROTECTION (220V)	1	403-M05050003-021	42	PANHEAD TAPPING SCREW-B-W/WASHER (M5x	2
303-02001-004-011	3	CORD ARMOR (Ø10.3)	1	203-0018-00004-002	43	SPINDLE LOCK BUTTON (BLACK)	1
303-01003-004-004	4	CABLE CLIP	1	302-04051-000-003	44	HEAD LOCKING KNOB (Ø7xØ12x5.6)	1
403-M04014003-160	5	PANHEAD TAPPING SCREW-B (M4x14)	2	302-04119-907-005	45	ARBOR LOCK	1
403-M04012003-080	7	PANHEAD TAPPING SCREW-B (M4x12)	6	302-05532-000-001	46	NEEDLE BEARING (TA1212)	1
302-04171-000-001	9	SPRING (Ø0.8 x Ø6.4 x Ø8 x 9T x 26L)	1	302-06015-000-029	47	BEVEL GEAR (M2.0x32T)	1
403-M04016003-160	10	PANHEAD TAPPING SCREW-B (M4x16)	2	406-M04012070-080	48	SOCKET CAP SCREW (M4-0.7 x 12)	1
403-M04016003-020	12	PANHEAD TAPPING SCREW-B (M4x16)	4	302-03264-914-001	49	CLAMP PLATE	1
302-04009-000-004	13	BRUSH SPRING (0.4x4x3T)	2	406-M05020080-160	52	SOCKET CAP SCREW (M5-0.8 x 20)	4
307-02004-000-004	14	CARBON BRUSH HOLDER (7x17)	2	404-M06008100-050	53	SOCKET SET SCREW (M6-1.0 x 8)	1
303-01303-005-002	15	INSULATION PLATE (10x38x1)	2	0205-0025-00000-005	55	MOLDED GASKET (Ø2.5 x 30cm)	1
407-M04006070-030	17	PANHEAD MACHINE SCREW (M4-0.7 x 6)	2	406-M05035080-080	56	SOCKET CAP SCREW (M5-0.8 x 35)	4
0203-0085-00026-044	18	MOTOR HOUSING (GRAY-RAL7016)	1	302-04122-914-001	57	FIXING STUD	2
0299-0135-00000-003	19	LED INDICATOR LIGHT	1	302-03238-000-001	59	RETAINING PLATE	1
303-01065-026-015	20	HANDLE HALF-RIGHT (GRAY-RAL7016)	1	303-02075-000-002	60	SPLASH FLAP	1
303-01066-026-015	21	HANDLE HALF-LEFT (GRAY-RAL7016)	1	418-M05000080-080	61	NYLOCK NUT (M5xP0.8)	2
303-01340-026-003	22	CARBON CAP (GRAY-RAL7016)	2	421-05010-10	62	PARALLEL KEY (5x5x10)	2
303-01402-026-001	23	HOSE RETAINER (GRAY-RAL7016)	1	302-04003-000-180	63	SPINDLE	1
403-M04020001-160	24	PANHEAD TAPPING SCREW-A (M4x20)	3	302-05510-000-004	64	BALL BEARING (6004)	1
403-M04025003-080	25	PANHEAD TAPPING SCREW-B (M4x25)	3	303-02002-004-003	65	OIL SEAL (Ø20xØ32x5)	1
403-M04050001-080	26	PANHEAD TAPPING SCREW-A (M4x50)	6	302-04546-000-001	66	SPROCKET ARBOR	1
302-04529-000-001	28	PANHEAD TAPPING SCREW-A (M5x90)	2	302-04547-914-001	67	ADJUSTOR BLOCK	1
302-05514-000-008	29	BALL BEARING (6200)	1	303-02009-004-099	68	O-RING (Ø5x1)	1
303-01057-004-027	30	FAN BAFFLE (BLACK)	1	302-03265-000-001	70	ADJUSTOR PLATE	1
299-0001-23000-157	31	ARMATURE (220V-100x54.1x75)	1	415-M04010070-110	71	FLAT HEAD MACHINE SCREW (M4-0.7 x 10)	1
302-05516-000-002	32	BALL BEARING (6202)	1	424-163020-20	72	FLAT WASHER (Ø16xØ30x2)	1
302-06018-000-017	33	BEVEL PINION GEAR (M2.0x14T)	1	422-S16-0	73	EXTERNAL CIRCLIP (S-16)	1
405-M04010070-040	34	TRUSS HEAD MACHINE SCREW (M4-0.7 x 1	1	201-0161-00164-001	74	SIDE COVER	1
426-040000-00	35	EXTERNAL STAR WASHER (M4)	1	4101-M08000125-080	75	FLANGE NUT (M8xP1.25)	2
306-01100720A035-01	36	WIRE LEAD (1007-20#35CM)	1	0203-0158-00004-001	76	HAND GUARD (BLACK)	1
456-0	37	CRIMP CAP CONNECTOR (C4)	1	305-00442-000-001	77	TUBULAR SPIRIT LEVEL	2
303-02009-004-090	38	O-RING (Ø35x1.5)	1	406-M05025080-160	78	SOCKET CAP SCREW (M5-0.8 x 25)	2
425-050000-00	40	SPRING WASHER (M5)	6	305-00071-000-015	83	WATER COUPLING	1
ARTICLE NO.	NO.	PARTS NAME	Q'TY				

202-0036-00000-002	85	SIDE HANDLE	1
302-03256-914-001	86	HANDLE BRACKET	1
406-M08016125-170	87	SOCKET CAP SCREW (M8-1.25 x 16)	3
305-00096-000-005	89	PIN (Ø4x15.8)	2
302-03093-903-002	91	THRUST PLATE	1
305-00390-000-002	92	T-WRENCH	1
0299-0014-00164-026	93	SWITCH ACTUATOR (RED-187C)(LOCK-OFF	1
0299-0125-00164-006	94	GEAR PLATE (RED-187C)	1
302-04143-914-003	95	TENSION ADJUSTOR SCREW	1
302-04478-903-002	97	CLIP	1
0205-0008-00000-021	98	CABLE PROTECTOR (Ø10x110CM)	1
302-04502-903-002	99	SPRING	1
0299-0018-00000-058	100	WATER FEED CONNECTOR KIT	1
204-0021-20000-055	101	ELECTRONICS UNIT (220V)	1
302-04511-903-002	102	BUMPER SPIKE	1
299-0002-20000-199	104	STATOR (220V-100x54.1x75)	1
303-01299-000-003	105	HOSE JOINER (BLACK-Ø10xØ14.4)	3
204-0025-00000-004	107	HALL EFFECT SWITCH	1
305-00001-000-035	108	CARBON BRUSH (7x17x19)(220V)	2
405-M04006070-070	109	TRUSS HEAD MACHINE SCREW (M4-0.7 x 6)	2