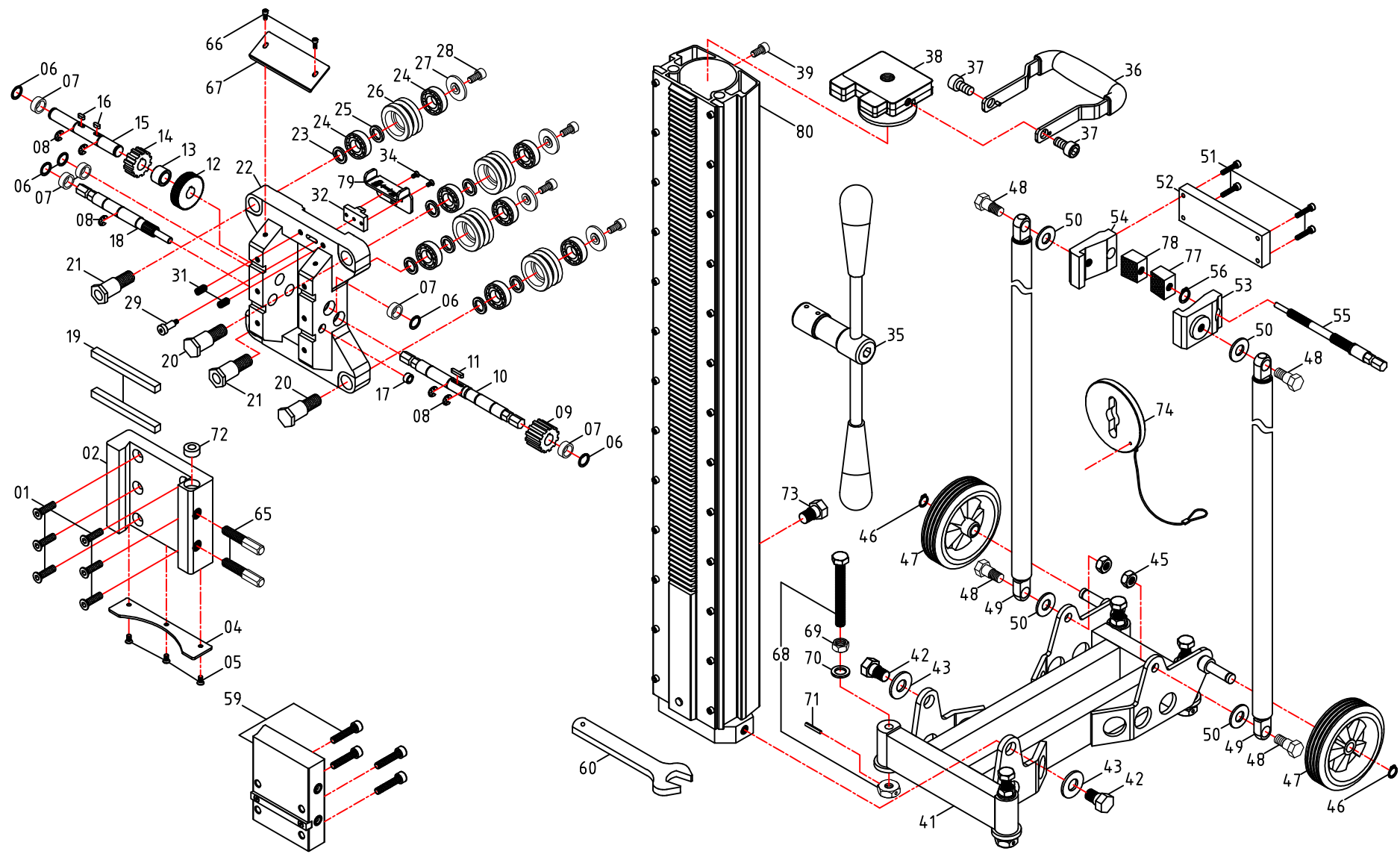


MODEL : S800/1M Stand (AGP Europe)



S800/1M DIAMOND CORE DRILL STANDS

ARTICLE NO.	NO.	PARTS NAME	Q'TY	ARTICLE NO.	NO.	PARTS NAME	Q'TY
419-M08030125-080	1	FLAT HEAD SOCKET CAP SCREW (M8-1.25	6	303-01130-004-002	38	TANK COVER LID (BLACK)	1
0299-0155-00000-003	2	CRADLE	1	406-M05010080-160	39	SOCKET CAP SCREW (M5-0.8 x 10)	1
302-03135-903-001	4	CRADLE PLATE	1	302-03037-903-016	41	BASE	1
415-M05012080-080	5	FLAT HEAD MACHINE SCREW (M5-0.8 x 12)	3	302-04433-903-001	42	SHOULDER BOLT	2
422-W15-0	6	INTERNAL CIRCLIP (IS15)	5	424-163030-20	43	FLAT WASHER (5/8"xØ30x3)	2
307-01003-000-025	7	BUSHING (Ø15xØ20x10)	5	418-M12000175-080	45	NYLOCK NUT (M12xP1.75)	2
422-E12-0	8	E-CLIP (E-12)	5	422-S13-0	46	EXTERNAL CIRCLIP (S-13)	2
302-06044-907-001	9	CRANK GEAR (M2.5x12T)	1	305-00097-000-001	47	WHEEL	2
302-04012-907-001	10	CRANK SPINDLE	1	302-04433-903-002	48	SHOULDER BOLT	4
421-04020-10	11	PARALLEL KEY (4x4x20)	1	0299-0157-00000-001	49	BUTTRESS BAR (650MM)	2
302-06019-907-002	12	SPINDLE GEAR (M1.0x46T)	1	424-143225-20	50	FLAT WASHER (Ø14.3xØ32x2.5)	4
302-04029-907-003	13	SHAFT RACE (Ø15xØ22x15)	1	406-M05025080-160	51	SOCKET CAP SCREW (M5-0.8 x 25)	4
302-06019-907-001	14	SPINDLE GEAR (M2.5x12T)	1	201-0130-0906-001	52	CLAMP PLATE	1
302-04427-907-001	15	INTERMEDIATE SHAFT	1	201-0131-0906-001	53	CLAMP CLAW-LEFT	1
421-04010-10	16	PARALLEL KEY (4x4x10)	2	201-0131-0906-002	54	CLAMP CLAW-RIGHT	1
307-01003-000-005	17	BUSHING (Ø8xØ12x6)	1	302-04430-907-001	55	ANDLE CLAMP BOLT	1
302-04426-907-001	18	REDUCTION CRANK PINION	1	422-S15-0	56	EXTERNAL CIRCLIP (S-15)	1
305-00317-000-001	19	MOUNTING TENON (10x10x115)	2	0299-0036-00000-004	59	MOUNTING SPACER (130mm)	1
302-04428-907-001	20	AXLE SHAFT	2	305-00302-004-003	60	WRENCH (M19)	1
302-04429-907-001	21	ECCENTRIC SHAFT	2	302-04434-000-002	65	CRADLE LOCK BOLT (M12xP1.75x70)	2
201-0072-00913-001	22	CARRIAGE	1	406-M05008080-080	66	SOCKET CAP SCREW (M5-0.8 x 8)	2
302-03215-907-001	23	AXLE SPACER C	4	302-03018-903-003	67	FENCE	1
302-05516-000-003	24	BALL BEARING (6202)	8	302-04497-903-002	68	LEVELING SCREW	4
302-03215-903-001	25	AXLE SPACER B	4	410-M12000175-080	69	HEX NUT (M12-1.75)	4
302-04229-907-001	26	GUIDE ROLLER	4	424-132320-20	70	FLAT WASHER (Ø13.2xØ23x2)	4
302-04432-903-001	27	AXLE SPACER A	4	462-10	71	ROLL PIN (Ø4x25)	4
406-M08016125-160	28	SOCKET CAP SCREW (M8-1.25 x 16)	4	305-00093-000-001	72	BULLS-EYE LEVEL	1
302-04127-901-004	29	FENCE PIVOT BOLT (M5-0.8 x 23.7)	1	302-04433-903-005	73	SHOULDER BOLT	1
302-04420-901-003	31	DETENT UNIT (M8-1.25 x 16.75)	2	0299-0296-00000-001	74	ANCHORING PLATE SET	1
302-02022-903-002	32	CARRIAGE LOCK	1	302-04425-903-003	77	CLAMP WEDGE-LEFT	1
415-M04008070-080	34	FLAT HEAD MACHINE SCREW (M4-0.7 x 8)	2	302-04425-903-004	78	CLAMP WEDGE-RIGHT	1
0299-0153-00000-001	35	CRANK HANDLE	1	0202-0136-00903-003	79	CARRIAGE LOCK LEVER	1
202-0036-00902-001	36	FRONT HANDLE	1	0299-0156-00000-021	80	COLUMN (1000MM)	1
406-M12016175-080	37	SOCKET CAP SCREW (M12-1.75 x 16)	2	302-04415-000-003	無編號	TETHER	1