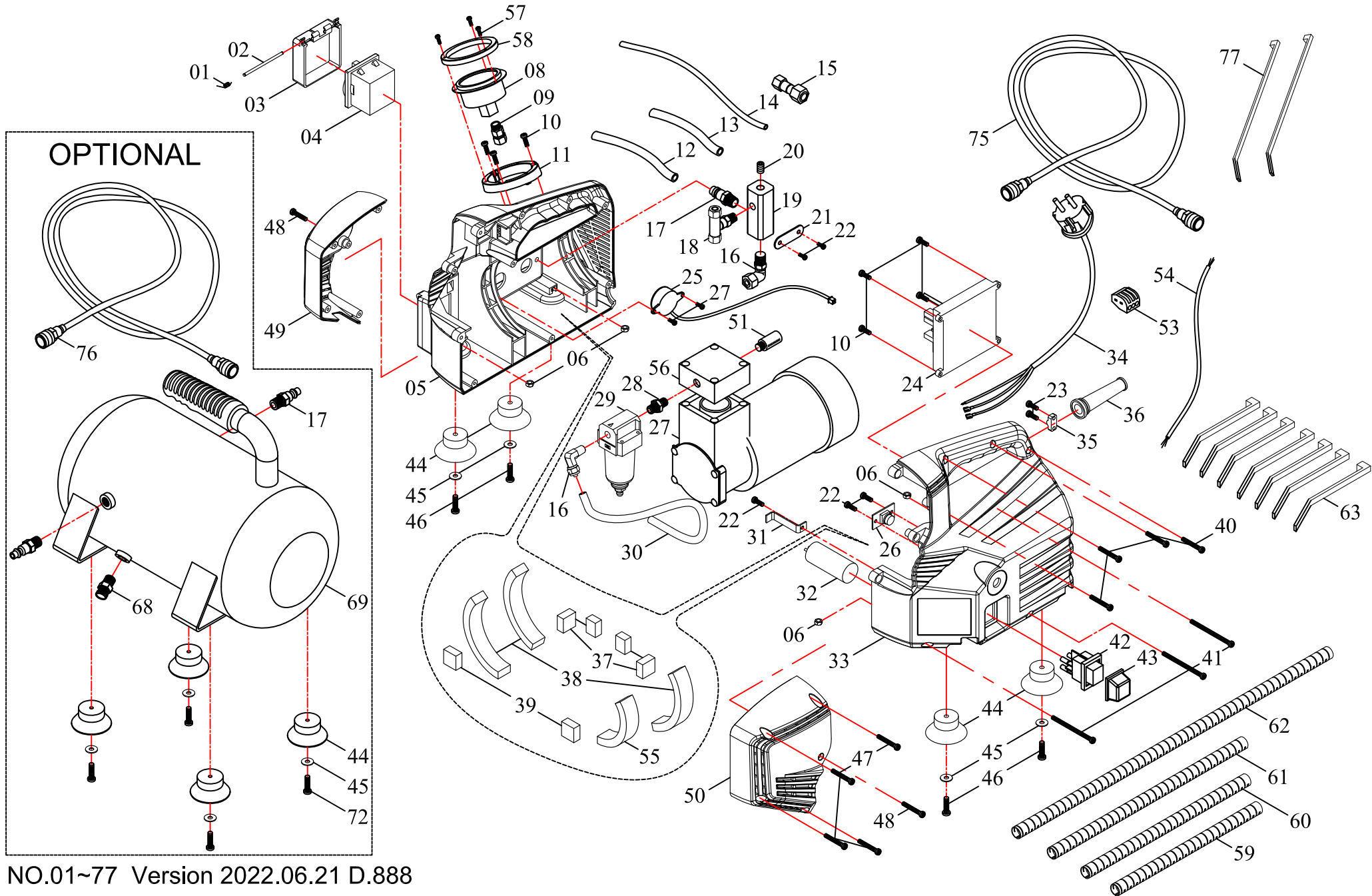


MODEL : VP140 VACUUM PUMP (AGP Europe)



NO.01~77 Version 2022.06.21 D.888

VP140-220V(10713-000-222-0000-010-004)**VP140 VACUUM PUMP**

ARTICLE NO.	NO.	PARTS NAME	Q'TY	ARTICLE NO.	NO.	PARTS NAME	Q'TY
302-04166-000-002	1	TORSION SPRING (Ø0.7xØ2.5 xØ3.9x21L)	1	303-01279-004-002	33	MAIN HOUSING-LEFT	1
302-04193-000-001	2	HINGE PIN	1	206-031503350-02	34	POWER SUPPLY CABLE (VDE-1.5x3Cx3.5M)	1
303-01127-004-001	3	HINGED COVER (BLACK)	1	303-01003-004-004	35	CABLE CLIP	1
304-04002-000-003	4	INTEGRATED SWITCHING SOCKET (VDE-22)	1	203-0004-00000-001	36	CORD ARMOR	1
303-01279-004-001	5	MAIN HOUSING-RIGHT	1	0203-0131-00000-001	37	SEAL(20MM)	4
410-M05000080-080	6	HEX NUT (M5xP0.8)	4	0203-0131-00000-002	38	SEAL(120MM)	3
403-M03008001-080	7	PANHEAD TAPPING SCREW-A (M3x8)	2	0203-0131-00000-003	39	SEAL(15MM)	2
305-00281-000-001	8	AIR PRESSURE GUAGE	1	403-M04025003-020	40	PANHEAD TAPPING SCREW-B (M4x25)	4
305-00017-000-001	9	PUSH LOCK FITTING (PT1/8"xØ6)	1	403-M04060003-020	41	PANHEAD TAPPING SCREW-B (M4x60)	3
403-M04012002-050	10	PANHEAD TAPPING SCREW-B (M4x12)	7	304-03003-004-001	42	MAGNET SWITCH (110V&220V)	1
303-01280-100-001	11	GUAGE MOUNT	1	305-00089-000-001	43	SWITCH BOOT	1
0205-0007-00149-003	12	TUBE (Ø4xØ6x20CM)(ORANGE)	1	303-02041-004-001	44	FOOT PAD	4
0205-0007-00149-006	13	TUBE (Ø4xØ6x18CM)(ORANGE)	1	424-061410-20	45	FLAT WASHER (Ø5.5xØ14x1)	4
0205-0007-00149-008	14	TUBE (Ø2.7xØ4x27CM)	1	412-M05020080-050	46	PANHEAD MACHINE SCREW-W/WASHER (M4x16)	4
305-00086-000-004	15	UNION FITTING (Ø4xØ6)	1	402-M04030003-090	47	PANHEAD TAPPING SCREW-B-W/WASHER (M4x16)	4
305-00017-000-002	16	PUSH LOCK FITTING (PT1/4"xØ6)	2	403-M04020003-050	48	PANHEAD TAPPING SCREW-B (M4x20)	2
305-00087-000-008	17	QUICK RELEASE CONNECTOR MALE	1	303-01281-004-001	49	FRONT COVER-RIGHT (BLACK)	1
305-00017-199-003	18	PUSH LOCK FITTING (Ø6xØ6xPT1/4")	1	303-01281-004-002	50	FRONT COVER-LEFT (BLACK)	1
301-02005-000-003	19	MOUNTING PLATE	1	305-00018-000-002	53	THREE WIRE PUSH IN CONNECTOR	1
404-M07000000-050	20	SOCKET SET SCREW (PT1/4')	1	306-020000003030-01	54	EARTH WIRE (Ø3x300MM)	1
302-03193-901-001	21	MOUNTING PLATE	1	0203-0131-00000-004	55	SEAL(100MM)	1
403-M04008003-050	22	PANHEAD TAPPING SCREW-B (M4x8)	5	403-M03015001-080	57	PANHEAD TAPPING SCREW-A (M3x15)	3
403-M04016003-020	23	PANHEAD TAPPING SCREW-B (M4x16)	2	303-01285-100-001	58	PROTECTIVE RING (ORANGE-021C)	1
204-0017-00000-001	24	ELECTRONICS BOARD (110V&220V)	1	0205-0029-00004-001	59	spiral harness wrap(21cm)	1
304-04023-000-001	25	BUZZER	1	0205-0029-00004-002	60	spiral harness wrap(23cm)	1
0205-0024-00000-001	27	OIL-LESS VACUUM MOTOR (110V)	1	0205-0029-00004-003	61	spiral harness wrap(28.5cm)	1
0205-0024-00000-002	27	OIL-LESS VACUUM MOTOR (220V)	1	0205-0029-00004-004	62	spiral harness wrap(51cm)	1
305-00071-000-004	28	NIPPLE	1	423-25100-2	63	ZIP TIE (2.5x100MM)	7
305-00277-000-001	29	WATER FILTER	1	299-0112-00000-005	75	AIR HOSE-EUROPEAN TYPE (2.5M)	1
0205-0007-00149-007	30	TUBE (Ø4xØ6x48CM)(ORANGE)	1	423-47200-0	77	ZIP TIE (4.7x200MM)	2
302-03154-901-001	31	CAPACITOR BRACKET	1	423-47200-0	77	ZIP TIE (4.7x200MM)	2