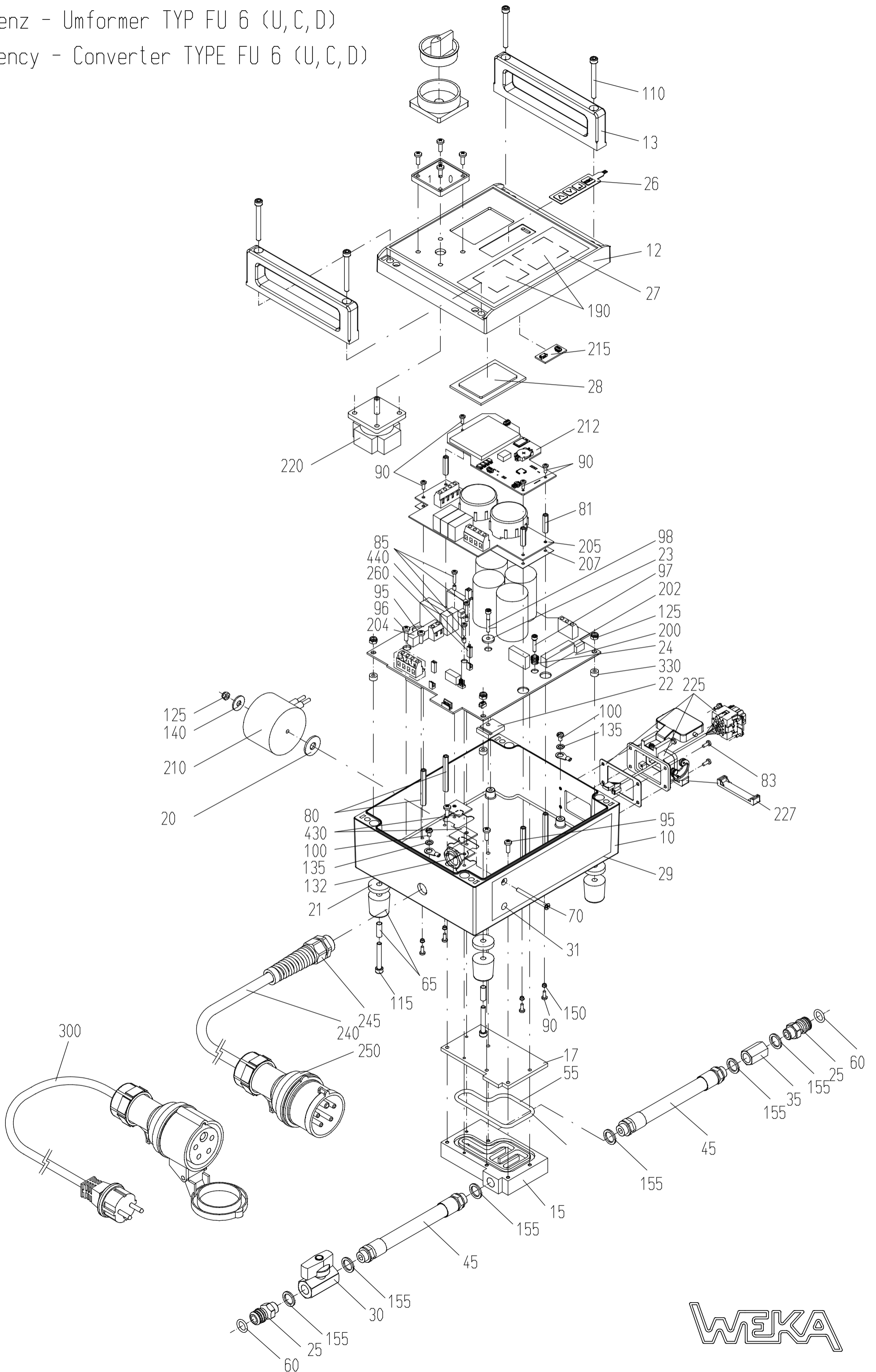


Frequenz - Umformer TYP FU 6 (U, C, D)
 Frequency - Converter TYPE FU 6 (U, C, D)



**Spare Parts Price List - Frequency Converter
Type FU6 U/C/D - Mechanical Parts**

EPE-FU6

FIG	NO	DESCRIPTION	STANDARD	TYPE	PART NO
10	1	FC-Box with pos. 15, 55, 95			FU06501C
12	1*	FC-Box Cover with pos. 27, 190		Type U	FU06502
	1	FC-Box Cover with pos. 26, 27, 28, 190, 215		Type D	FU06502D
	1	FC-Box Cover with pos. 27, 190		Type C	FU06502C
13	2	Carrying Handle			FU06504
	1*	Carrying Handle			DK30105
15	1	Cooling Plate			FU04506
	1*	Cooling Plate			FU04506-1
	1	Cooling Plate			FU04506-2
17	1*	Cooling Plate Lid			FU04507
20	1	Distance Washer			FU04508
21	4*	Distance Washer			FU06521
	1*	Protection Profile			FU06509
	1*	Gasket			FU06520
22	1	Supporting plate			FU06524
23	1	Supporting Bush			FU06525
24	1	Supporting Bush			FU06526
25	2	Quick Connect Nipple			DK20225
26	1	Keypad		Type D	FU06570
27	1	Front plate		Type C/D	FU06602D
	1*	Front plate		Type U	FU06602
28	1	Display Pane		Type D	FU06572
29	1	LED sticker		Type C	FU06604
30	1	Ball Valve			7014001
31	1	Light conductor		Type C	8604045
	1	Sealing cap		Type D	7247059
35	1	Socket			7014026
40	4*	Quick Connect Nipple	G1/4"/8		7014668
45	2	Hose Piece cpl. with nipples			DK30235
	2*	Junction Hose	5/8x110		7058110
55	1	O-Ring	RDR70x4		5570004
60	2	O-Ring	RDR11x2,5		5511025
65	4	Rubber foot with spacer sleeve	24,5x25x5,5		2824255
70	1	Count. Flat Head Screw	M5x55		0405055
	1*	Count. Flat Head Screw	M4x55		0404055
75	1*	Count. Raised Head Screw	M3x8		0403008
80	4	Hexagon spacer bolt	M3x50/i		1503501
81	3	Hexagon spacer bolt	M3x45/i/a		1503452
83	4	Cross recess cheese head screw	M4x10		0304010
85	2	Cross recess cheese head screw	M3x16		0303016
	2*	Cross recess cheese head screw	M3x20		0303020
	2*	Cross recess cheese head screw	M3x14		0303014
90	10	Cross recess cheese head screw	M3x8		0303008
92	2*	Cross recess cheese head screw	M3x12		0303012
95	3	Cross recess cheese head screw	M4x12		0204012
	3*	Cross recess cheese head screw	M4x16		0304016
	3*	Slotted cheese head screw	M4x12		0204112
96	1	Cheese head screw	M4x14		0304014
97	1	Hexagon socket head screw	M4x20		0104020
	2*	Slotted cheese head screw	M4x25		0204025
98	1	Hexagon socket head screw	M4x30		0104030
100	2	Slotted Pan Head Screw	M5x8 MsNi		0315008
110	4	Hex. Socket Head Screw	M5x75		0105075
	2*	Hex. Socket Head Screw	M6x35		0106035
115	4	Hex. Socket Head Screw	M5x40		0105040
	4*	Hex. Socket Head Screw	M5x45		0125045
125	5	Hexagon Nut with prevailing torque insert	M5		1005985
130	1*	Hexagon Nut with prevailing torque insert	M5		1005985
	1*	Hexagon Nut with prevailing torque insert	M4		1004001
132	1	Hexagon Nut	M20x1,5		8806020
135	2	Locking Washer	SM5		1805000
140	1	KF-Washer	5,3x25x1,25		1825531
	1*	KF-Washer	4,3x20x1,25		1820431
150	4	Sealing Washer	M3		1803001
155	6	Sealing Ring	G1/4"		7014003
170*	1	Protective Hood			8016503
190	2	Dessicant Sack	glued		7040601

Spare Parts Price List - Frequency Converter Type FU6 U/C/D - Electrical Parts

FIG	NO	DESCRIPTION	STANDARD	TYPE	PART NO
200	1	Inverter Board w. thermal conductive paste		Typ D / C	FU06512D
	1*	Inverter Board w. thermal conductive paste	Connector 10P		FU06512U
	1*	Inverter Board w. thermal conductive paste	Connector 5P		FU06512
202	1	Fuse F202	6,3x32, 16A, M		8065016
204	1	Fuse F201	6,3x32, 20A, T		8065020
205	1	Power Supply Board			FU06514
207	1	Insulation Film	TRIVOLTHERM ® N NMN: NOMEX/ PET- Folie/NOMEX®		FU06528
210	1	PFC-Reactor			FU06538
212	1	Bluetoothboard with Display		Type D	FU06518
	1	Bluetoothboard with Display	for conversion FU6U to FU6D		FU06518R
	1	Bluetoothboard		Type C	FU06517
	1	Bluetoothboard	for conversion FU6U to FU6C		FU06517R
215	1	Adapter board		Type D	FU06513
220	1*	Main Switch			8020007
225	1	Bulkhead Case sealed incl. Female Insert and Wires			8016291C
	1*	Bulkhead Case with Protection Lid and Seal	10P+PE		8016710
	1*	Bulkhead Case with Seal	3P+PE		8010203
227	1	Handle			8006001
230	1*	Female Insert cpl. with Wire, Socket Strip and Contacts	5P+PE		8016465
	1*	Female Insert cpl. with Wire, Socket Strip, Contacts, Gasket and glued to the Bulkhead Case (fig.225)	5P+PE		8016475
	1*	Female Insert cpl. with Wire, Socket Strip and Contacts	10P+PE		8016610
231	1	Connection cable	2pol.		9302210
232	1	Connection cable	6pol., 150mm		9306170
233	1	Connection cable	MicroMatch 6pol. 150mm		9306150
235	1	Wire	1,5 x 130		9315131C
236	1	Wire	1,5 x 140		9315140C
237	1	Wire	1,5 x 150		9315150C
240	1	Cord	4G1,5x4m From 11/2015		8740152
	1*	Cord	5G1,5x4m		8740155
245	1	Cord Gland	M20x1,5 7-13		8804020
250	1	Mains Plug	CEE 16A6h5P		8016015
255	1	Spiral cable protection conduit	d = 5 - 20 mm, l = 130 mm,		9302100
300	1	Adaptor Cable cpl. with PRCD	400V / 230V		8715042
310	1	Nanocrystalline ring core	19x15x10		8619151
330	4	Distance Sleeve	5,2x10x5		1505005
430	2	Ceramic Insulating Plate			8321830
440	2	Insulation hose			7030208
	3*	Insulation hose			7030208
500	1	PRCD	10mA		8400010

* parts are substituted

The prices listed are gross prices in € per item, plus statutory Value added tax.

When ordering spare parts, please always state: machine number, quantity, designation, spare part number and, for electrical parts, the nominal voltage (if different from 230 V).

WEKA Elektrowerkzeuge KG, Auf der Höhe 20, D 75387 Neubulach - Altbulach
Telephon: +49 7053 96816-0, spare parts: +49 7053 96816-14 · Telefax: +49 7053 3138
Internet: www.weka-elektrowerkzeuge.de · E-mail: weka@weka-elektrowerkzeuge.de

Subject to change