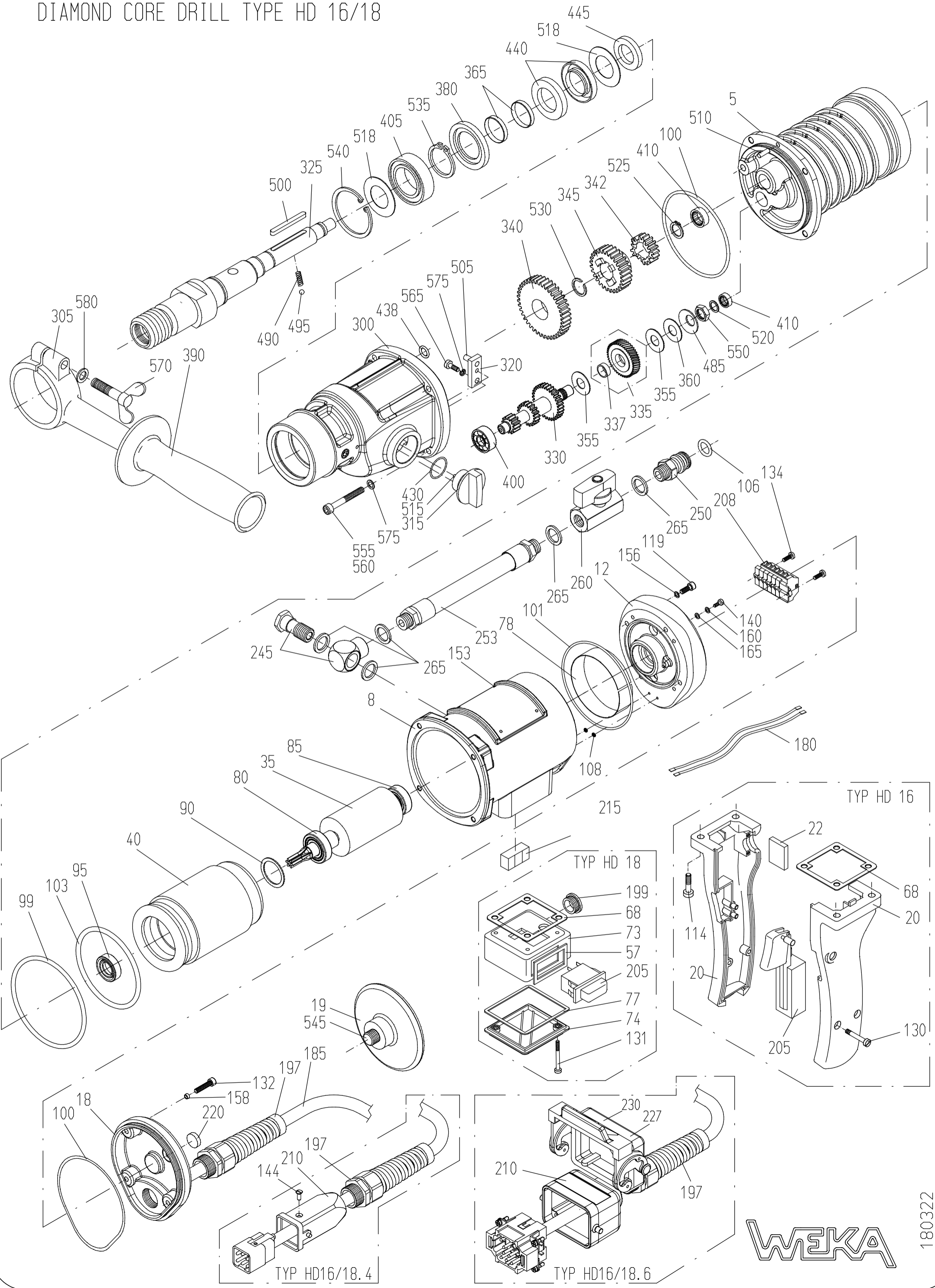


DIAMANT-KERNBOHRMASCHINE TYP HD 16/18

DIAMOND CORE DRILL TYPE HD 16/18



**Spare Parts Price List - Diamond Core Drill  
Type HD 16/18 - Motor**

EPE-HD16-18

FIG	NO	DESCRIPTION	STANDARD	TYPE	PART NO
5	1	Motor case			HD16101
8	1	Case Sleeve			HD16104
12	1	Motor Top Case			HD16103
18	1	Motor Top Case Hood		HD18	HD18107C
	1	Motor Top Case Hood		HD16	HD16107C
19	1	Shoulder rest cpl. with pos. 220, 545		HD16	HD16106C
20	1	Switch Handle		HD16	DK12105
22	1	Locking Disc		HD16	AM11130
35	1	Rotor with Bearings			HD16108
40	1	Stator cpl.			HS40109
57	1	Switch Sealing		HD18	HD10121
68	1	Terminal Case Packing			DK10122
73	1	Terminal Case		HD18	DK14130
74	1	Terminal Case Cover		HD18	DK14135
77	1	Cover Sealing		HD18	HD10122
78	1	Insulation Film			HD16140
80	1	Ball Bearing			6060011
85	1	Ball Bearing			6062902
90	1	Compensation Washer			2628171
95	1	Rotary Shaft Seal	RWD12x24x7		5012247
99	1	O-Ring	RDR80x3		5580003
100	2	O-Ring	RDR78x2		5578002
101	1	O-Ring	RDR78x1,5		5578015
103	1	O-Ring	RDR70x4		5570004
106	1	O-Ring	RDR11x2,5		5511025
108	2	O-Ring	RDR1x2		5500102
114	4	Hex. Soc. Head Screw	M5x25	HD16	0205025
119	4	Hex. Soc. Head Screw	M4x12		0104012
130	2	Pan Head Tapping Screw	3,9x19	HD16	0539019
131	2	Raised Cheese Head Screw	M5x50	HD18	0205050
132	4	Raised Cheese Head Screw	M4x20		0304020
134	2	Raised Cheese Head Screw	M3x8		0303008
140	1	Sl. Pan Head Screw	M4x6		0304006
144	1	Countersunk Head Screw	M3x8		0403008
153	4	Round Head grooved Pin	2,3x4		2223004
156	4	Locking Washer	SM4		1804000
158	4	Sealing Washer	M4		1804001
160	1	Curved Spring Washer	A4		1804137
165	1	Medium Washer	4,3x8x0,5 Ms		1804433
180	2	Motor Strand	0,25 <sup>3</sup> x150		8702150
185	1*	Cord cpl. with Male Insert and Contacts	6G1,5x4,4 5P	(TYPE).4	8744154
	1	Cord cpl. with Male Insert and Contacts	6G1,5x4,4 10P	(TYPE).6	8744514
197	1	Cord Gland	M20x1,5		8820152
199	1	Locking Screw	M20x1,5	HD18	7020150
205	1	Motor Switch		HD16	8015212
	1	Motor Switch		HD18	8015514
208	1	Center Terminal Block			7926106
210	1	Hood		(TYPE).4	8020103
	1	Hood		(TYPE).6	8016106
212	1	Protective Hood			8016504
215	1	Tube Water-Level			7510029
220	1	Tin Water-Level			7500015
227	1	Handle for Socket Case			8006001
230	1	Protective Hood			8016504
245	1	Angle Screwing	G1/4"		7015010
250	1	Quick Connect Nipple			DK20225
253	1	Hose Piece cpl. with nipples			DK30235
260	1	Ball Valve			7014001
265	5	Sealing Ring	G1/4"		7014003
	1	Pointing Sticker			DK20620

## Spare Parts Price List - Diamond Core Drill Type HD 16/18 - Gear

FIG	NO	DESCRIPTION	STANDARD	TYPE	PART NO
300	1	Gear Box cpl. w. locking screw			HD16201C
305	1	Clamp Ring incl. wing screw		HD16	DK12202
315	1	Gear Change Grip			DK10203
320	1	Gear Change Lever			DK30205
325	1	Drilling Spindle cpl. with Pos. 365,490,495 Tool Thread G 1/2"			HD16206C
	1*	Drilling Spindle cpl. with Pos. 365,490,495 Tool Thread G 1/2"		<01/2021	DK10206C
	1	Drilling Spindle cpl. with Pos. 365,490,495 Tool Thread 1 1/4"			HD16206.3C
330	1	Pinion Shaft			DK16208
335	1	Spur Wheel cpl. wit Pos. 337			DK12209C
337	1	Bearing Socket			DK10221
340	1	Gear Wheel 1			DK16212
342	1	Gear Wheel 3			DK16213
345	1	Slide Gear Wheel			DK16214
355	2	Brake Disk			DK10218
360	1	Pressure Disk			DK10219
365	2	Protective Sleeve			DK10220
380	1	Supporting Ring			DK10204
390	1	Handle		HD16	8900014
400	1	Ball Bearing	629		6062900
405	1	Ball Bearing	6005 2RS		6060052
410	2	Needle Bush	HK1010		6310100
430	1	O-Ring	RDR20x3		5520003
438	1	O-Ring	RDR6x2		5506002
440	2	Rotary Shaft Seal	AD24x40x7		5024407
445	1	Rotary Shaft Seal	AD22x35x7		5022357
485	1	Disk Spring			4028142
490	1	Pressure Spring	0,5x3,2x16		4305016
495	1	Ball	RB-4		2204000
500	1	Parallel Key	A5x5x40		3005040
505	1	Parallel Pin	5m6x15		2505015
510	1	Parallel Pin	4m6x10		2504010
515	1	Parallel Pin	3m6x16		2503016
518	1	Shim Ring	PS25x40x0,3		1925403
520	1	Shim Ring	PS10x16x1		1910161
525	1	Retaining Ring	AV14		3514001
530	1	Retaining Ring	SW18		3618000
535	1	Retaining Ring	25x1,2		3525012
540	1	Retaining Ring	JV47X1,75		3447117
545	1	Hexagon Socket Set Screw^^	M14x25		0714025
550	1	Hexagon Nut	BM12x1,5		1012015
555	1	Hex. Soc. Head Screw	M5x60		0105060
560	3	Hex. Soc. Head Screw	M5x30		0105030
565	1	Hex. Soc. Head Screw	M5x12		0105012
570	1	Wing Screw	M6x40	HD16	0506040
575	5	Locking Washer	SM5		1805000
580	1	Medium Washer	A 6,4	HD16	1806125
	1	Gear Oil	160 ml		9016004
	1	Carrying Case			DK10810

\* parts are substituted

The prices listed are gross prices in € per item, plus statutory Value added tax.

When ordering spare parts, please always state: machine number, quantity, designation, spare part number and, for electrical parts, the nominal voltage (if different from 230 V).

WEKA Elektrowerkzeuge KG, Auf der Höhe 20, D 75387 Neulach - Altbulach  
 Telephone: +49 7053 96816-0, spare parts: +49 7053 96816-14 · Telefax: +49 7053 3138  
 Internet: www.weka-elektrowerkzeuge.de · E-mail: weka@weka-elektrowerkzeuge.de

Subject to change