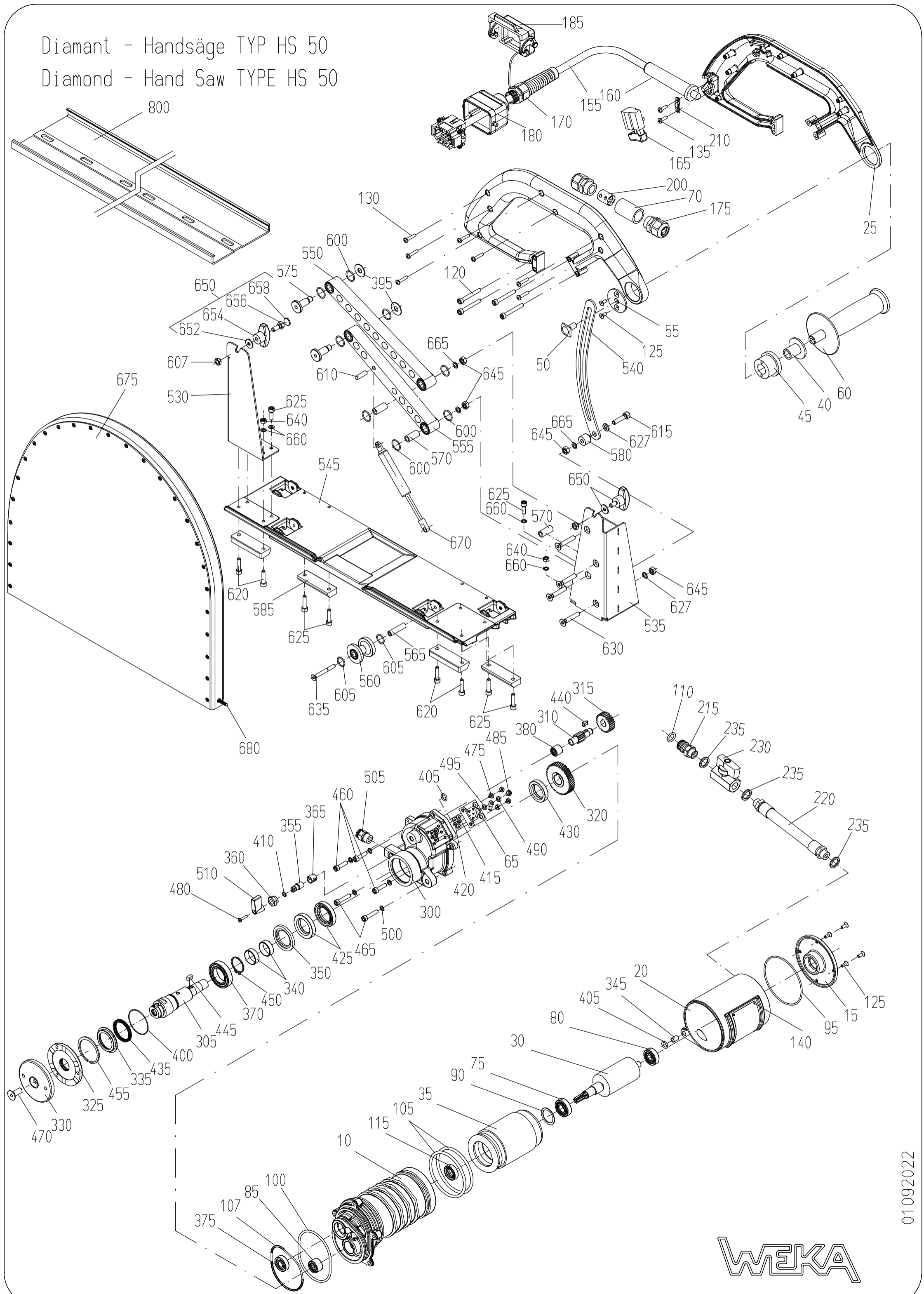


Diamant - Handsäge TYP HS 50  
 Diamond - Hand Saw TYPE HS 50



01092022



**Spare Parts Price List - Manually Diamond Wall Saw  
Type HS 50 - Motor**

EPE-HS50

FIG	NO	DESCRIPTION	STANDARD	TYPE	PART NO
10	1	Motorcase			HS50101
15	1	Motor Top Hood			HS40103
20	1	Case Sleeve			HS50104
25	1	Switch Handle cpl.			HS40105
30	1	Rotor cpl. with Bearings			HS50108
35	1	Stator cpl.			HS50109
40	1	Bearing Bush			HS40112
45	1	Locking Sleeve			HS40114
50	1	Locking Screw			HS40118
55	1	Locking Disk			HS40120
57	1	Slide Disk			HS40121
60	1	Handle			HS40122
65	1	Sealing Plate			HS40124
70	1	Tapped Sleeve			HS40126
75	1	Ball Bearing	6001 ZC3		6060011
80	1	Ball Bearing	629 ZZ		6062902
85	1	Needle Bush	HK1412		6310120
90	1	Compensation Washer			2628171
95	1	O-Ring	RDR78x2		5578002
100	1	O-Ring	RDR75X3		5575003
105	2	O-Ring	RDR70X4		5570004
107	1	O-Ring	RDR63X3		5563003
110	1	O-Ring	RDR11x2,5		5511025
115	1	Rotary Shaft Seal	RWD12x24x7A		5012247
120	4	Hexagon Socket Head Screw	M5x40		0105040
125	6	Countersunk Head screw	M4x10		0404010
130	7	Pan Head Tapping Screw	F3,9x19 (BZ)		0539019
135	2	Pan Head Tapping Screw	F3,9x13 (BZ)		0539013
140	4	Round Head Grooved Pin	2,3x4		2223004
155	1	Motor cable cpl. with Male Insert	6G1,5x4,4 10P		8744513
160	1	Cord Sleeve	D12		8701200
165	1	Motor Switch			8010240C
170	1	Cord Gland	M20x1,5 7-13		8820152
175	2	Cord Gland	M20x1,5 3x3		8803320
180	1	Connector Housing			8040110
185	1	Protective Hood			8016504
200	1	Female Terminal Block			7904005
210	1	Cord Clamping Piece			8800010
215	1	Quick Connect Nipple			DK20225
220	1	Hose Piece			DK30235
230	1	Ball Valve			7014001
235	3	Sealing Ring	G1/4"		7014003

## Spare Parts Price List - Manually Diamond Wall Saw Type HS 50 - Gear

FIG	NO	DESCRIPTION	STANDARD	TYPE	PART NO
300	1	Gear Box			HS50202
305	1	Spindle	1"		HS50206
310	1	Gear Shaft			HS50208
315	1	Spur Wheel			HS50209
320	1	Spindle Wheel			HS40215
325	1	Spindle Flange			HS50214
330	1	Blade Flange	1"		HS50216
335	1	Cover Ring	for RWD		HS40218-2
340	2	Shaft Wearing Sleeve			DK10220
345	1	Fixing Sleeve			HS40222
350	1	Supporting Disk			HS40230
355	1	Valve Shaft			HS40232
360	1	Cap Nut			HS40234
365	1	Sealing Sleeve			HS40236
370	1	Ball Bearing	61905/6905		6069052
375	1	Ball Bearing	609		6060900
380	1	Needle Bearing	HK1012		6310120
395	2	Thrust Bearing Washer	AS1024 Ni		6510241
400	1	O-Ring	RDR40x1		5540001
405	2	O-Ring	RDR8x2		5508002
410	1	O-Ring	RDR6x1		5506001
415	3	O-Ring	RDR2,06x2,62		5520626
420	2	O-Ring	RDR1X2		5500102
425	2	Rotary Shaft Seal	RWD24x40x7A		5024407
430	1	Rotary Shaft Seal	RWD22x35x7A		5022357
435	1	Rotary Shaft Seal	RWD28x35x4		5028354
440	1	Parallel Key	4x4x10		3004010
445	1	Parallel Key	A5x5x10		3005010
450	1	Retaining Ring	25x1,2		3525012
455	1	Retaining Ring	SB43x1,5		3643015
460	3	Hexagon Head Screw	M5x30		0105030
465	2	Hexagon Head Screw	M5x22		0105022
470	1	Countersunk Head Screw	M10x16 z		0410016
475	4	Countersunk Head Screw	M4x6		0414006
480	1	Cheese Head Screw	M3x8PZ		0303008
485	1	Pan Head Screw	M4x6		0304006
490	1	Curved Spring Washer	A4		1804137
495	1	Medium Washer	4,3x8x0,5 Ms		1804433
500	5	Locking Washer	SM5		1805000
505	1	Quick Connect Nipple	G1/8"/8		7018668
510	1	Grip	M3		2703220
	1	Gear Oil	50 ml		9004004

## Spare Parts Price List - Manually Diamond Wall Saw Type HS 50 - Traveller and Blade Guard

FIG	NO	DESCRIPTION	STANDARD	TYPE	PART NO
530	1	Bracket			HS50304
535	1	Guidance Bracket			HS50306
540	1	Locking gib			HS50308
545	1	Traveller			HS50310
550	1	Parallel Rocker upper			HS50312
555	1	Parallel Rocker lower			HS50314
560	4	Roll			HS50320
565	4	Bearing Sleeve			HS40322
570	2	Bearing Sleeve			HS50323
575	2	Bearing Stud			HS50210
580	1	Distance Sleeve			HS50324
585	4	Slider Segment			HS50326
590	2	Sechskantschraube			HS50328
592	2	Unterlagscheibe			HS50332
600	8	O-Ring	RDR20x1,5		5520015
605	8	O-Ring	RDR13x1,5		5513015
607	2	Setzmutter	M6		1006005
610	1	Parallel Pin	6m6x24		2506024
615	1	Hexagon Head Screw	M6x25		0106025
620	4	Hexagon head Screw	M5x22		0105022
625	8	Hexagon head Screw	M5x14		0105014
627	1	Medium Washer	6,4		1805125
630	3	Countersunk Head Screw	M6x35		0406035
635	4	Countersunk Head Screw	M5x45		0405045
640	4	Hexagon Nut	M5		1005000
645	1	Hexagon Nut	M6		1006000
650	2	Wing Screw	D40, M6		0506012
660	8	Locking Washer	SM5		1805000
665	4	Locking Washer	SM6		1806000
670	1	Gas Spring			4370450
675	1	Blade Guard			HS50302
680	1	Cursor			HS40328C

## Spare Parts Price List - Manually Diamond Wall Saw Type HS 50 - Flush Blade Guard

FIG	NO	DESCRIPTION	STANDARD	TYPE	PART NO
740	1	Flush Blade Guard cpl. with 750-785			HS50303C
750	1	Flush Blade Guard			HS50303
755	1	Stripe Brush			HS50335
760	13	Locking Ring			HS40305
765	13	Cheese Head Screw	M4x8		0504008
770	1	Distance Disk			HS50213
780	6	Countersunk Head Screw	M6x10		0406010
785	1	Set Screw	M10x10		0710010

## Spare Parts Price List - Manually Diamond Wall Saw Type HS 50 Appurtenances

FIG	NO	DESCRIPTION	STANDARD	TYPE	PART NO
800	1	Guide Rail	2,18 m		HS50402
	1	Quick Hose Connector	12/15-G1/2"		7012035
	1	Spanner	SW10		9889410
	1	Spanner	SW24/5,5		9889524
	1	Face Spanner	50x5		9800505
	1	Hexagon Cranked Wrench	SW6 lang		9818406

The prices listed are gross prices in € per item, plus statutory Value added tax.

When ordering spare parts, please always state: machine number, quantity, designation, spare part number and, for electrical parts, the nominal voltage (if different from 230 V).

WEKA Elektrowerkzeuge KG, Auf der Höhe 20, D 75387 Neulach - Altbulach  
 Telephone: +49 7053 96816-0, spare parts: +49 7053 96816-14 · Telefax: +49 7053 3138  
 Internet: www.weka-elektrowerkzeuge.de · E-mail: weka@weka-elektrowerkzeuge.de

Subject to change