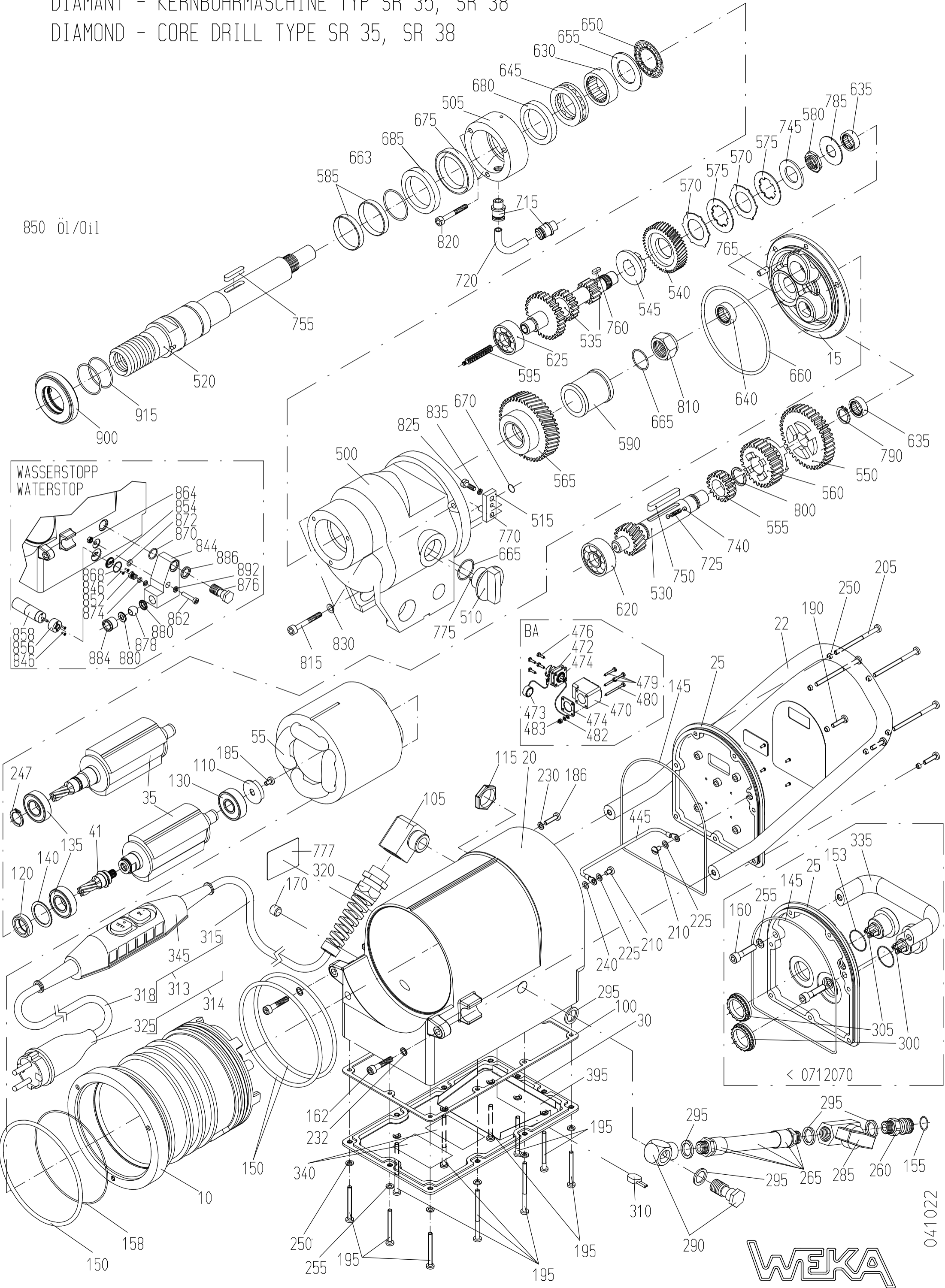


DIAMANT - KERNBOHRMASCHINE TYP SR 35, SR 38  
 DIAMOND - CORE DRILL TYPE SR 35, SR 38

850 Öl/0il



< 0712070

WEKA

041022

**Spare Parts Price List - Diamond Core Drill  
Type SR 25/35/38 (S) - Motor**

EPE-SR3

FIG	NO	DESCRIPTION	STANDARD	TYPE	PART NO
10	1	Motorcase			SR30101
	1	Motorcase		110V	SR30101/11
15	1	Intermediate Flange cpl. with O-Ring			SR30102-1C
20	1	Case Sleeve			SR30104-1
20	1	Case Sleeve	for auto feed	SR2-7 BA	SR30104-1BA
20	1	Case Sleeve	for water stop	SR2-7 W	SR30104-1W
20	1	Case Sleeve	for auto feed	SR2-7 BAW	SR30104-1BAW
22	1	Carrying Holder		SR25/38	SR30105
25	1	Switch Cover cpl. with keypad pos. 145, 379, 382, 384,		SR25/38	SR60133C
	1*	Switch Cover for On/Off button		SR35	SR30133
30	1	Terminal Case Cover cpl.			SR30135-1C
35	1	Rotor compl.			SR30108
41	1*	Rotor pinion			SR30113
55	1	Stator compl.		SR25/38	SR70109
	1	Stator compl.		SR35	SR30109
100	1	Terminal Case Sealing			SR30122
105	1	Cable Angle	M20x1,5		DK40140-1
107	1	Fitting Sleeve			SR30146
110	1	Sensor-Disc			SR30118
115	1	Hexagon Nut	M20x1,5		8806020
120	1	Rotary Shaft Seal	14x24x7		5014247
130	1	Ball Bearing	6201 2Z		6062012
135	1	Ball Bearing	6002 2RS		6060022
140	1	Compensation Washer			2632201
145	1	O-Ring	RDR 135x2		5513502
150	3	O-Ring	RDR 110x4		5511004
153	2*	O-Ring	RDR 20x1,5		5520015
155	1	O-Ring	RDR 11x2,5		5511025
157	4	O-Ring	RDR 30x3		5530003
158	1	O-Ring	RDR 105x1,5		5510715
159	1	Hex. Socket Head Screw	M5x16		0105016
160	2*	Hex. Socket Head Screw	M6x20		0106020
162	2	Hex. Socket Head Screw	M6x25		0106025
165	1*	Hex. Socket Head Screw	M4x55		0104055
168	5	Cheese head screw	M4x6		0294006
170	1	Locking Screw	R1/8"		7018008
172	1	Cheese Head Screw	M3x6		0303006
175	6	Cheese head screw	M3x8		0303008
180	11	Cheese head screw	M3x14		0303014
185	10	Cheese head screw	M4x8		0304008
186	2	Cheese head screw	M4x12		0204012
187	4	Cheese head screw	M4x14		0304014
190	4	Cheese head screw	M4x16		0304016
	4	Cheese head screw	M4x25	110V	0304025
195	11	Cheese head screw	M4x40		0204040
200	2*	Cheese head screw	M4x45		0304045
205	4	Cheese head screw	M4x60		0304060
	4	Cheese head screw	M4x70	110V	0304070
210	2	Slot. Pan Head Screw	M4x6		0304006
212	1	Slot. Count. Head Screw	M5x50		0405050
215	1	Slot. Count. Head Screw	M5x16	110V	0405016
220	1*	Hexagon Nut	M5		1005000
225	3	Curved Spring Washer	A4		1804137
230	6	Locking Washer	SM4	230V	1804000
	5	locking Washer	SM4	110V	1804000
232	2	Locking Washer	SM6		1806000
240	1	Medium Washer	4,3x8 Ms		1804433
245	1*	Medium Washer	4,3x12		1804902
247	1	Retaining Ring	15x1		3515001
250	18	Sealing Washer	M4		1804001
255	1	Cu-Sealing Ring	4x8x1		1804002
	2*	Sealing Ring	6x1		1806002
260	1	Quick Connect Nipple with O-Ring			DK20225
265	1	Hose Piece cpl. w. nipples			DK30235
285	1	Ball Valve			7014001
290	1	Angle Screwing	G1/4"		7015010
295	5	Sealing Ring	G1/4"		7014003
300	1*	On-Button			8011313
305	1*	Off-Button			8011221
310	1	Thermal Switch			8050100

313	1	Cord cpl. w. PRCD without Plug			8738044
314	1	Cord cpl. w. PRCD and EURO Plug			8738005
315	1	Cord for PRCD	3G1,5x2,3m	230V	8723154
318	1	Cord for PRCD	3G1,5x1,5m	230V	8715152

	1	Cord for PRCD with EURO Plug	3G1,5x1,5m	230V	8715153
320	1	Cord Gland	M20x1,5		8804020
325	1	Mains Plug	Schuko		8016013
335	1*	Carrying Handle			8910050
340	1	Dessicant sack	glued		7040601
345	1	PRCD Inline Protector	230V	230V	8400010

## Spare Parts Price List - Diamond Core Drill Type SR 25/35/38 (S) - Electronic

FIG	NO	DESCRIPTION	STANDARD	TYPE	PART NO
350	1	Control Board		SR38	SR38510
	1	Control Board		SR38S	SR38510S
	1	Control Board		SR38BA	SR38510BA
	1	Control Board		SR38BAW	SR38510BAW
	1	Control Board		SR38SBA	SR38510SBA
	1	Control Board		SR38SBAW	SR38510SBAW
	1	Control Board		SR38DI	SR38510DI
	1	Control Board		SR38PS	SR38510PS
	1	Control Board		SR35	SR30510
	1	Control Board		SR35 I/O	SR30510-1
	1	Control Board		SR25	SR20510-2
	1	Control Board		SR25S	SR20510-2S
	1	Control Board		SR25BA	SR20510-2BA
	1	Control Board		SR25BAW	SR20510-2BAW
	1	Control Board		SR25SBA	SR20510-2SBA
	1	Control Board		SR25SBAW	SR20510-2SBAW
	1	Control Board		SR25DI	SR20510-2DI
	1	Control Board		SR25PS	SR20510-2PS
	1	Control Board		SR25HS	SR20510-2HS
	355	1	Control Board		SR38 110V
1		Control Board		SR25 110V	SR20510_110
1*		Microcontroller U2			8644877
1*		GAL U3			8628201
1		Power Board cpl. with Thermo Film		SR25/38	SR20512-1
360	1	Power Board cpl. with Thermo Film		SR25/38 110V	SR20512_110
	1*	Power Board cpl. with Thermo Film (without Thyristor)		SR25	SR20512
	1	Power Board cpl. with Thermo Film (without Thyristor)		SR35	SR30512
360	1	Power Supply Board		SR25/38	SR30514-2
	1	Power Supply Board (with Triac)		SR35	SR30514
	1	Power Supply Board (with Triac)		SR25/38 110V	SR30514_110
365	1	Sensor Board			SR30516
368	1	I/O Board		SR25/38	SR60518-1
	1	I/O Board		SR25/38BA	SR60518-1BA
	1	I/O Board		SR25/38PS	SR60518-1PS
	1	I/O Board		SR25/38 Inch	SR60518-1I
	1*	I/O Board		SR38	SR30518
	1*	I/O Board		SR25	SR20518
370	1*	Cooling Plate			SR30140
378	1	Distance Bolt		SR25/38	SR30564
379	1	Display Cover		SR25/38	SR60152
380	1	PFC-Reactor		230V	SR30538
381	2	PFC-Reactor		SR25/38 110V	SR30538_110
382	4	Switching Tappet	Rd3x5,5		SR60566
383	1	Socket		110V	SR30107
384	1	Keypad		SR25/38	SR60570
385	2	Thermo Film			SR30520
390	1	Insulation Film			SR30522-2
392	1	Insulation Fim			SR30525
395	1	Lid Insulation			SR30526
400	10	Insulation Bush			SR30530
405	2	Damper Ring with O-Ring			SR30532C
	1*	Clamp for GAL			SR30534
410	1*	Strand Kit - ON-OFF Button	2x2 green/red		SR30540
415	1	Strand Kit - Sensor	4 multicoloured		SR30542
420	1	Strand Kit - I/O-Board	5 multicoloured		SR30544
425	1*	Strand Kit - Power Board/Conrol Board	2 orange		SR30546
430	1*	Strand - PS -CB+	2,5²x105 red		SR30550-1
	1*	Strand - Bridge Rectifier +	2,5²x75 red		SR30550
435	1	Strand - PS -PB -	2,5²x100 black	230V	SR30552-1
	1*	Strand - Bridge Rectifier -	2,5²x75 black		SR30552
436	2	Strand - PS -PB -	2,5²x110 black	110V	SR30552-2

440	2*	Strand - Bridge Rectifier ~1	2,5°x125 blue		SR30554
445	1	PE Strand	1x5x110 gn/ye		SR30558

455	1*	Bridge Rectifier			8025800
460	4	Shock Absorber	10xM4		2810942

### Spare Parts Price List - Diamond Core Drill Type SR 25/35/38 (S) - Feed Control

FIG	NO	DESCRIPTION	STANDARD	TYPE	PART NO
469	1	Feed Control Board		SR2/3 BA	SR20519
470	1	Bulkhead Angle		SR2-7 BA	SR30142BA
472	1	Bulkhead Case cpl. with gasket and strands	2P+PE 50V/16A	SR2-7 BA	8016103
473	1	Protection Hood		SR2-7 BA	8010503
474	2	Flange Gasket		SR2-7 BA	5325005
476	4	Cheese Head Screw	M3x10	SR2-7 BA	0303010
479	3	Cheese Head Screw	M3x35	SR2-7 BA	0303035
480	1	Cheese Head Screw	M3x40	SR2-7 BA	0303040
482	1	Locking washer	SM3	SR2-7 BA	1803000
483	1	Hexagon Nut	M3	SR2-7 BA	1003000
485	1	Strand Kit - Dataline	8x0,25 <sup>2</sup>	SR2-7 BA	SR30548
487	1	Strand Kit - Power/LP	2x0,75 <sup>2</sup>	SR2-7 BA	SR30549
489	4	Hexagon Spacer Bolt	M4x24	SR2-7 BA	1504224

### Spare Parts Price List - Diamond Core Drill Type SR 25/35/38/68 (S) - Waterstop

FIG	NO	DESCRIPTION	STANDARD	TYPE	PART NO
		Waterstop		SR2-7	SR3060
842	1	Board Waterstop		SR2-7	SR30521
844	1	Valve Case cpl. with fig. 878, 880, 884		SR2-7	SR30650C
852	1	Interlinking Shaft		SR2-7	SR30652C
854	1	Seal Disk		SR2-7	SR30654
856	1	Reinforcing Bush		SR2-7	SR30656
858	1	DC-Planet Gear Drive		SR2-7	9924080
846	4	Countersunk Flat Head Screw	M2x6z	SR2-7	0402006
862	1	Hexagon Socket Screw	M5x25	SR2-7	0205025
864	1	Hexagon Set Nut	M5	SR2-7	1005005
868	1	O-Ring	RDR15x1	SR2-7	5515001
870	1	O-Ring	RDR14x1,5	SR2-7	5514015
872	1	O-Ring	RDR7x1,5	SR2-7	5507015
874	2	O-Ring	RDR5x1,5	SR2-7	5505015
876	1	Hollow Bolt	G1/4"	SR2-7	SR30662
	1*	Hollow Bolt		SR2-7	7014037
878	1	Ball		SR2-7	SR30660
880	2	Seal Disk		SR2-7	SR30658
884	1	Reducing Nipple		SR2-7	SR30664
886	2	Sealing Ring	G1/4"	SR2-7	7014003
888	3	Distance Bolt	M3x10 i/a	SR2-7	1503102
890	3	Cr. Recessed Cheese Head Screw	M3x6	SR2-7	0203006
892	1	Sealing Disk	M5	SR2-7	1805001

**Spare Parts Price List - Diamond Core Drill  
Type SR 25/35/38/68 (S) - Gear**

FIG	NO	DESCRIPTION	STANDARD	TYPE	PART NO
500	1	Gear Box		SR38/35/68	SR30201
	1	Gear Box		SR25	SR20201
505	1	Water Supply Bush			SR30202
510	1	Gear Change Grip cpl. with Fig.665, 775		SR38/35/68	DK20203C
515	1	Gear Change Lever cpl. with Parallel Pin		SR38/35/68	DK30205C
	1*	Carrying Holder		SR25	SR20228
520	1	Drill Spindle cpl. with fig. 585, 1 1/4" UNC		SR38/68	SR30206-1C
	1*	Drill Spindle cpl. with fig. 585, 1 1/4" UNC		SR38/35/68	SR30206C
	1	Drill Spindle cpl. with fig. 585, 1 1/4" UNC		SR25	SR20206C
	1	Drill Spindle, cpl. with fig.585, FL32-3		SR3804/6804	SR30206.4C
	1	Drill Spindle, cpl. with fig. 585. M33/3		SR3808/SR680	SR30206.8C
	1	Drill Spindle cpl. with fig. 585, M33/3		SR25	SR20206.8C
530	1	Gear Change Shaft		SR38/35/68	DK30207
	1	Gear Change Shaft		SR38S	DK20207S
	1	Gear Shaft		SR25	SR20207
	1	Gear Shaft		SR25S	SR20207S
535	1	Pinion Shaft		SR38/35/68	SR30208-1
	1	Pinion Shaft		SR25	SR20208
540	1	Spur Wheel			SR30209
545	1	Bearing Bush			SR30221
550	1	Gear Wheel 1		SR38/35/68	DK30212
	1	Gear Wheel		SR25	SR20212
555	1	Gear Wheel 3		SR38/35/68	DK30213
560	1	Slide Gear Wheel		SR38/35/68	DK30214
565	1	Spindle Wheel		SR25/35/38/68	SR30215
	1	Spindle Wheel		SR38S	SR30215HS
	1	Spindle Wheel		SR25S	SR30215S
570	2	Brake Disk			SR30218
575	2	Pressure Disk			SR30219
580	1	Hexagon Nut			SR30220-2
585	2	Shaft Wearing Sleeve			DK20210
590	1	Spindle-Sleeve			SR30216
595	1	Feed Worm			SR30230
620	1	Ball Bearing	6302		6063020
625	1	Ball Bearing	6201		6062011
630	1	Needle Bearing	NK3/020		6330200
635	2	Needle Bush	HK1412		6314120
640	1	Needle Bush	HK2016		6320160
645	1	Thrust Ball Bearing			6551106
650	1	Thrust Needle Bearing	AXK3047		6530470
655	1	Thrust Bearing Washer	AS3047		6530471
660	1	O-Ring	RDR102x3		5510203
663	1	O-Ring	RDR34x2	SR38/35/68	5534002
665	2	O-Ring	RDR20x3	SR38/35/68	5520003
	1	O-Ring	RDR20x3	SR25	5520003
670	1	O-Ring	RDR9x3		5509003
675	1	Rotary Shaft Seal	40x52x7		5040527
680	1	Rotary Shaft Seal	38x50x7		5038507
685	1	Rotary Shaft Seal	40x52x7S		5040521
715	2	Quick Connect Nipple	G1/4"/8		7014668
720	1	Junction Hose	5/8x110		7058110
725	1	Pressure Spring		SR38/35/68	4305235
740	2	Ball	4	SR38/35/68	2204000
745	1	Disk Spring	31,5x16,3x2		4031162
750	1	Parallel Key	A6x6x45	SR38/35/68	3006045
	1	Parallel Key	A6x6x14	SR25	3006014
755	1	Parallel Key	A5x5x25		3005025
760	1	Parallel Key	A4x4x10		3004010
765	1	Parallel Pin	6m6x10		2506010
770	1	Parallel Pin	5m6x15	SR38/35/68	2505015
775	1	Parallel Pin	3m6x16	SR38/35/68	2503016
777	1	Name Plate		SR38/35/68	DK30601.2

## Spare Parts Price List - Diamond Core Drill Type SR 25/35/38/68 (S) - Gear

FIG	NO	DESCRIPTION	STANDARD	TYPE	PART NO
785	1	Shim Ring	35x14x1	after 0313...	SR30217
	1*	Shim Ring	PS14x20x1		1914201
790	1	Retaining Ring	16x1	SR38/35/68	3516001
	1	Retaining Ring	SW20	SR25	3620000
800	1	Retaining Ring	SW20	SR38/35/68	3620000
810	1	Hexagon Nut	M22x1,5		SR30226
815	3	Hex. Soc. Head Screw	M6x35		0106035
820	3	Hex. Soc. Head Screw	M5x45		0105045
825	1	Hex. Soc. Head Screw	M5x12	SR38/35/68	0105012
	2*	Hex. Soc. Head Screw	M5x20	SR25	0115020
830	3	Locking Washer	SM6		1806000
835	1	Locking Washer	SM5	SR38/35/68	1805000
	2*	Locking Washer	SM5	SR25	1805000
850	1	Gear Oil	300ml	SR38/35/68	9030004
	1*	Gear Oil	300ml	SR38	9030007
	1	Gear Oil	160ml	SR25	9016004
	1*	Gear Oil	160ml	SR25	9016007
900	1	Antifriction Element		1 1/4" UNC	AE35
	1	Antifriction Element		M33/3	AE60
915	2	O-Ring	32x1,5	1 1/4" UNC	5532015
	1	O-Ring	33x1,5	M33/3	5533015

\* parts are substituted

The prices listed are gross prices in € per item, plus statutory Value added tax.

When ordering spare parts, please always state: machine number, quantity, designation, spare part number and, for electrical parts, the nominal voltage (if different from 230 V).

WEKA Elektrowerkzeuge KG, Auf der Höhe 20, D 75387 Neubulach - Altbulach  
Telephon: +49 7053 96816-0, spare parts: +49 7053 96816-14 · Telefax: +49 7053 3138  
Internet: [www.weka-elektrowerkzeuge.de](http://www.weka-elektrowerkzeuge.de) · E-mail: [weka@weka-elektrowerkzeuge.de](mailto:weka@weka-elektrowerkzeuge.de)

Subject to change