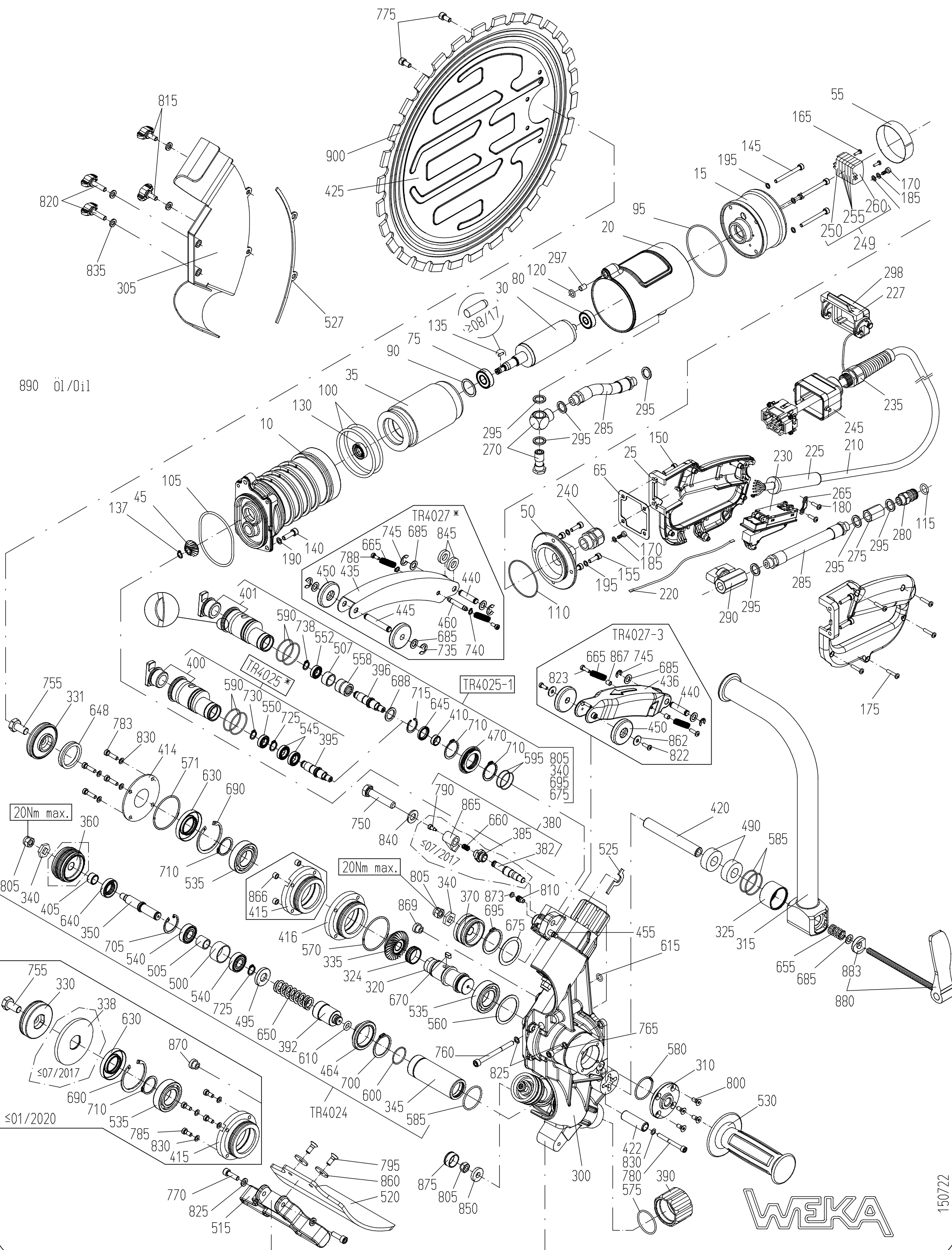


Diamant - Ringsäge TYP TR 40
 Diamond - Ring Saw TYPE TR 40



890 öl/0il

20Nm max.

20Nm max.

≤01/2020

WEKA

150722

**Spare Parts Price List - Diamond - Ring Saw
Type TR 40 - Motor**

EPE-TR40

FIG	NO	DESCRIPTION	STANDARD	TYPE	PART NO
10	1	Motorcase			TS40101
15	1	Motor Top Case			TS40103
20	1	Case Sleeve			TS40104
25	1	Switch Handle cpl.			TS40105
30	1	Rotor with Bearings	> 08 / 2017		TR40108
	1*	Rotor with Bearings	< 07 / 2017		TK40108
35	1	Stator cpl.			TS40109
45	1	Bevel Gear Set Fig.45+335 (TR40113.1 + TR40215.1) only change as a set	> 08 / 2017		TR4022.1
	1*	Bevel Gear Set Fig.45+335 (TR40113 + TR40215) only change as a set	< 07 / 2017		TR4022
50	1	Motor Top Case Hood incl. Fig. 65, 110			TS40128C
55	1	Insulation Film			TS40522
65	1	Terminal Case Packing			DK10122
75	1	Ball Bearing			6060011
80	1	Ball Bearing			6062902
90	1	Compensation Washer			2628171
95	1	O-Ring	RDR78X2		5578002
100	2	O-Ring	RDR74X4		5574004
105	1	O-Ring	RDR72X2		5572002
110	1	O-Ring	RDR55X2		5555002
115	1	O-Ring	RDR11x2,5		5511025
120	1	O-Ring	RDR8x2		5508002
130	1	Rotary Shaft Seal	RWD12x24x7A		5012247
135	1	Parallel Pin	> 08 / 2017		TR40145
	1*	Parallel Pin	< 07 / 2017		2503010
137	1	Retaining Ring	9x1 > 08 / 2017		3509001
	1*	Retaining Ring	8x0,8 < 07 /		3508008
140	2	Hex. Socket Head Screw	M6x20		0106020
145	4	Hex. Socket Head Screw	M5x50		0105050
150	4	Hex. Socket Head Screw	M5x20		0115020
155	4	Hex. Socket Head Screw	M5x16		0105016
165	2	Cheese head screw	M3x10		0303010
170	1	Sl. Pan Head Screw	M4x6		0304006
175	5	Pan Head Tapping Screw	F3,9x19 (BZ)		0539019
180	2	Pan Head Tapping Screw	F3,9x13 (BZ)		0539013
185	1	Curved Spring Washer	A4		1804137
190	2	Locking Washer	SM6		1806000
195	8	Locking Washer	SM5		1805000
200	1	Medium Washer	4,3x8x0,5 Ms		1804433
210	1	Cord cpl. with male insert, + Fig. 225,235,240,245,298	6G1,5x4,4 10P		8744512
220	1	Switch Strand	1,5"x200		8715202
225	1	Cord Sleeve	D12		8701200
227	1	Handle for Socket Case			8006001
230	1	Motor Switch			8010201
235	1	Cord Gland	M20x1,5 7-13		8820152
240	1	Cord Gland	M20x1,5 6x2,5		8862520
245	1	Hood	6B EMV		8016106
249	1	Terminal Block cpl. with marking (fig.250,255,260)			7924300
250	1	End Terminal Block with Fixing Flange			7924301
255	4	Center Terminal Block			7924321
260	1	End Plate with Fixing Flange			7900361
265	1	Cord Clamping Piece			8800010
270	1	Angle Screwing	G 1/4"		7015010
275	1	Socket			7014026
280	1	Quick Connect Nipple			DK20225
285	2	Hose Piece cpl. with nipples			DK30235
290	1	Ball Valve			7014041
295	7	Sealing Ring	G1/4"		7014003
297	1	Fixing Sleeve			HS40222
298	1	Protective Hood			8016504

Spare Parts Price List - Diamond - Ring Saw Type TR 40 - Gear

FIG	NO	DESCRIPTION	STANDARD	TYPE	PART NO
300	1	Gear Box cpl. with Guide Bush, Bow Pin, Seals and O-Rings			TR40201-1C
305	1	Cover cpl. with Distance Bush and Fig. 815,820,835			TR40202C
310	1	Bearing Hood incl. O-Ring fig.580			TR40203C
315	1	Handle cpl.			TS40205-1C
320	1	Spindle incl. Shaft Wearing Sleeve fig.324			TR40206-2C
	1*	Spindle	> 08 / 2017		TR40206-1
	1*	Spindle incl. Oil Stopper	< 07 / 2017		TR40206C
324	1	Shaft Wearing Sleeve			TR40210
325	1	Sleeve			TS40210
330	1*	Drive Wheel	> 08 / 2017		TR40214-1
	1*	Drive Wheel	< 07 / 2017		TR40214
331	1	Drive Wheel cpl. with V-Ring	> 02 / 2020		TR40214-2C
335	1	Bevel Gear Set Fig.45+335 (TR40113.1 + TR40215.1) only change as a set	> 08 / 2017		TR4022.1
	1*	Bevel Gear Set Fig.45+335 (TR40113 + TR40215) only change as a set	< 07 / 2017		TR4022
338	1*	Pressure Disk	< 07 / 2017		TR40219
340	4	Hex Washer			TR40220
	2	Guide Sleeve cpl. without Guide Roller			TR4024
345	2	Guide Sleeve			TR40225
350	2	Roller Shaft			TR40226
360	2	Guide Roller kpl. incl. Fig. 805			TR4023C
370	2	Support Roller incl. Fig. 805			TR40228C
380	2*	Clamping Shaft kpl.			TR40229C
382	2*	Clamping Shaft			TR40229
385	2*	Cap Nut			TR40230
390	2	Knob			TR40232
392	2	Pressure Sleeve incl. O-Ring fig.610			TR40234C
395	2*	Roller Shaft			TR40236
396	2	Roller Shaft			TR40236-1
	2*	Eccentric Shaft cpl. without Support Roller			TR4025
	2	Eccentric Shaft cpl. without Support Roller			TR4025-1
400	2*	Eccentric Shaft incl. T-Knob			TR40240C
401	2	Eccentric Shaft incl. T-Knob			TR40240-1C
405	2	Shaft Wearing Sleeve			TR40242
410	2	Shaft Wearing Sleeve			TR40244
414	1	Protection disc			TR40247
	1	Conversion Kit - New Sealing System			TR4060
415	1*	Bearing Ring incl. O-Ring fig.570			TR40248C
416	1	Bearing Ring incl. O-Ring fig.570			TR40248-2C
420	1	Handle Axle			TS40250
422	1	Stop Sleeve			TS40258
425	1	Guide Blade			TR40252
	1*	Guard Bow cpl.			TR4027
	1	Guard Bow cpl.			TR4027-3
435	1*	Guard Bow			TR40260-1
436	1	Guard Bow			TR40260-3
440	1	Bow Axle			TR40262
445	1*	Bow Axle			TR40264
450	2	Bow Wheel			TR40265
455	1	Bow Pin			TR40266-1
460	1*	Bow Pin			TR40267
464	2	Protection Sleeve cpl.			TR40270C
470	2	Protection Sleeve cpl. w. O-Rings fig.595			TR40272C
490	2	Adjust Sleeve			TS40280-1
495	2	Pressure Disk			TR40282
500	2	Distance Sleeve			TR40283
505	2	Distance Sleeve			TR40284
507	2	Distance Sleeve			TR40285
515	1	Stand			TR40290
520	1	Splash Guard			TR40292
525	2	Seal			TR40296
527	1	Housing seal			TR40297

**Spare Parts Price List - Diamond - Ring Saw
Type TR 40 - Gear**

FIG	NO	DESCRIPTION	STANDARD	TYPE	PART NO
530	1	Handle			8900014
535	2	Ball Bearing	6005		6060050
540	4	Ball Bearing	6001ZZ		6060011
545	4*	Ball Bearing	6801ZZ		6068012
550	2*	Ball Bearing	6800ZZ		6068002
552	2	Ball Bearing	698ZZ		6069802
558	2	Needle Bearing	NK12/16		6312160
560	1	Compensation Washer			2646401
570	1	O-Ring	RDR 50x2		5550002
571	1	O-Ring	RDR 50x1,5		5550015
575	2	O-Ring	RDR 34x2		5534002
580	1	O-Ring	RDR 32x2		5532002
585	4	O-Ring	RDR 32x1,5		5532015
590	4	O-Ring	RDR 30x1,5		5530015
595	4	O-Ring	RDR 25x1		5525001
600	2	O-Ring	RDR 24x1,5		5524015
610	2	O-Ring	RDR 8X3		5508003
615	1	O-Ring	RDR 8x2		5508002
630	1	Rotary Shaft Seal	RWD25x47x7A		5025471
640	2	Rotary Shaft Seal	RWD15x28x7A		5015281
645	2	Rotary Shaft Seal	RWD15x21x3A		5015213
648	1	V-Ring			5132001
650	2	Pressure Spring	2,8x16,1x65		4328065
655	1	Pressure Spring	2,0x12,5x22,5		4320225
660	2*	Pressure Spring			4306088
665	2	Extension Spring	1,0x7,0x30		4410030
670	1	Parallel Pin	A5x5x10		3005010
675	2	Shim Ring	PS35x45x1		1935451
685	5	Shim Ring	PS8x14x1		1908141
688	2	Supporting Disk	SS15x21x1,5		1915215
690	1	Retaining Ring	J47x1,75		3447175
695	2	Retaining Ring	A35x1,5		3535015
700	2	Retaining Ring	A32x1,5		3532015
705	2	Retaining Ring	J28x1,2		3428012
710	5	Retaining Ring	A25x1,2		3525012
715	2	Retaining Ring	JV21x1		3421001
725	4	Retaining Ring	A12x1		3512001
730	2	Retaining Ring	A10x1		3510001
735	2*	Retaining Ring	RA6 > 04 / 18		3606679
	2*	Retaining Ring	A8x0,8 < 04 / 18		3508008
738	2	Retaining Ring	A8x0,8		3508008
740	2	Retaining Ring	A6x0,7		3506007
745	4	Retaining Ring	RA6		3606679
750	2	Hexagon Head Screw	M10x50		0610050
755	1	Hexagon Head Screw	> 08 / 2017		TS40276
	1*	Clamp Screw (Count. Head Screw)	< 07 / 2017		TR40276
760	1	Hex. Socket Head Screw	M6x70		0106070
765	1	Hex. Socket Head Screw	M6x20		0106020
770	2	Hex. Socket Head Screw	M6x16		0106016
775	2	Hex. Socket Head Screw	M6x12		0106012
780	1	Hex. Socket Head Screw	M5x45		0125045
783	4	Hex. Socket Head Screw	M5x20		0105020
785	4*	Hex. Socket Head Screw	M5x12		0115012
788	2	Hex. Socket Head Screw	M4x10		0104010

Spare Parts Price List - Diamond - Ring Saw Type TR 40 - Gear

FIG	NO	DESCRIPTION	STANDARD	TYPE	PART NO
790	2*	Hex. Socket Head Screw with Shoulder	M3		0503004
795	2	Count. Head Screw	M6x16		0406016
800	4	Count. Head Screw	M5x12		0405012
805	5	Hexagon Nut with prevailing torque insert	M8		1008985
810	2	Hex. Socket Set Screw with dog point	M8x12		0708012
815	2	Wing Srew	M6x15		0506515
820	2	Wing Srew	M6x25		0506525
822	2	Pan Head Tapping Screw	F3,9x9,5		0539095
823	2	Pan Head Tapping Screw	F3,5x13		0535013
825	4	Locking Washer	SM6		1806000
830	5	Locking Washer	SM5		1805000
835	4	Curved Spring Washer	B6		1806137
840	2	Medium Washer	A10,5		1810125
845	2*	Medium Washer (PE)	10,5x20x4		1820104
850	1	Medium Washer	8,4x21x4		1821844
860	2	Medium Washer	A10,5		1810125
	2*	Medium Washer	6,6x22x2		1806410
862	2	Medium Washer	4,3x12x1		1812431
865	2*	Lever Body			2760444
866	4	Distance Sleeve	5,2/8x5		1505205
867	2	Distance Sleeve	4,5/6x6		1504006
869	1	Rubber Grommet			7000610
870	1*	Rubber Grommet			7000608
873	2	Covering Hood			7240100
875	1	Plug			5321495
880	1	Cam Lever cpl. with Pressure Disc	M8		2708158
883	1	Pressure Disc			2708003
890	1	Gear Oil	30ml		9003004

Spare Parts Price List - Diamond - Ring Saw Type TR 40 - Equipment

FIG	NO	DESCRIPTION	STANDARD	TYPE	PART NO
900	1	Ring Saw Blade			TR40401
	1	Ring Saw Blade incl. Drive Wheel cpl. TR40214-2C			TR40401C
	1	Ring Saw Blade Masonry		Masonry	TR40401.1
	1	Ring Saw Blade Masonry incl. Drive Wheel cpl. TR40214-2C		Masonry	TR40401.1C
	1*	Hex Angle Screwdriver	SW6		9018406
	1	Face Pin Wrench	35x5		9800355
	1	Box Wrench	SW17		9831117

Spare Parts Price List - Diamond - Ring Saw Type TR 40 - Special Parts

FIG	NO	DESCRIPTION	STANDARD	TYPE	PART NO
	1	Male Insert without Male Contacts	10P		8016312
	5	Male Contact	1,5 ²		8016815
	1	Coding Bridge			TR40540

* parts are substituted

The prices listed are gross prices in € per item, plus statutory Value added tax.

When ordering spare parts, please always state: machine number, quantity, designation, spare part number and, for electrical parts, the nominal voltage (if different from 230 V).

WEKA Elektrowerkzeuge KG, Auf der Höhe 20, D 75387 Neubulach - Altbulach
Telephon: +49 7053 96816-0, spare parts: +49 7053 96816-14 · Telefax: +49 7053 3138
Internet: www.weka-elektrowerkzeuge.de · E-mail: weka@weka-elektrowerkzeuge.de

Subject to change