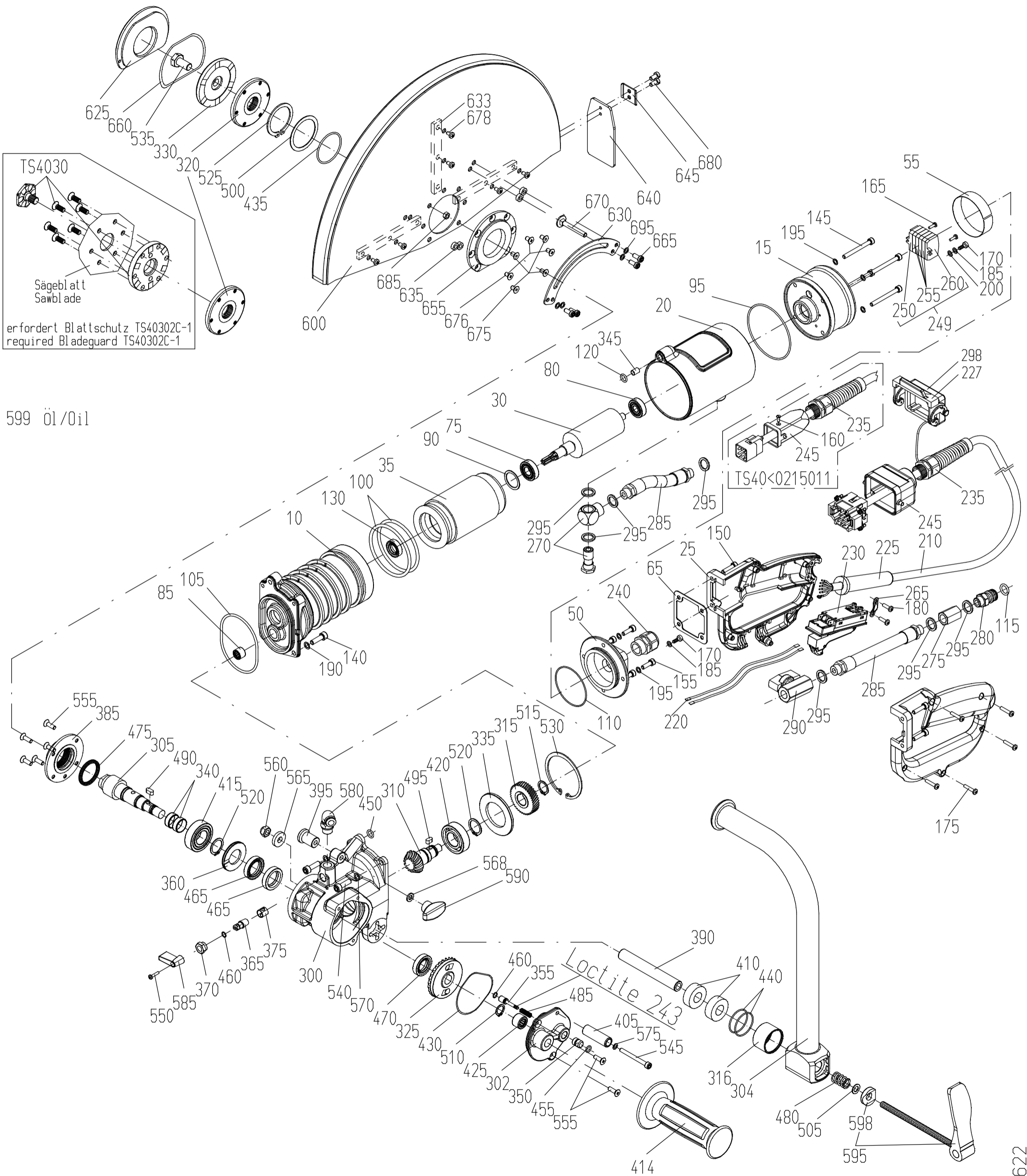


Diamant - Trennsäge TYP TS 40

Diamond - Disc Saw TYPE TS 40



599 Öl/Oil

TS4030  
Sägeblatt  
Sawblade  
erfordert Blattschutz TS40302C-1  
required Bladeguard TS40302C-1

TS40<0215011

Loctite 243

WEKA

300622

**Spare Parts Price List - Diamond - Disc Saw  
Type TS 40 - Motor**

EPE-TS40

FIG	NO	DESCRIPTION	STANDARD	TYPE	PART NO
10	1	Motorcase			TS40101
15	1	Motor Top Case			TS40103
20	1	Case Sleeve			TS40104
25	1	Switch Handle cpl.			TS40105
30	1	Rotor with Bearings			TS40108
35	1	Stator cpl.			TS40109
50	1	Motor Top Case Hood incl. Fig. 65, 110			TS40128C
55	1	Insulation Film			TS40522
65	1	Terminal Case Packing			DK10122
75	1	Ball Bearing			6060011
80	1	Ball Bearing			6062902
85	1	Needle Bush	HK1010		6310100
90	1	Compensation Washer			2628171
95	1	O-Ring	RDR78X2		5578002
100	2	O-Ring	RDR74X4		5574004
105	1	O-Ring	RDR72X2		5572002
110	1	O-Ring	RDR55X2		5555002
115	1	O-Ring	RDR11x2,5		5511025
120	1	O-Ring	RDR8x2		5508002
130	1	Rotary Shaft Seal	RWD12x24x7A		5012247
140	2	Hex. Socket Head Screw	M6x20		0106020
145	4	Hex. Socket Head Screw	M5x50		0105050
150	4	Hex. Socket Head Screw	M5x20		0115020
155	4	Hex. Socket Head Screw	M5x16		0105016
160	1	Count. Raised Head Screw	M3x8		0403008
165	2	Cheese head screw	M3x10		0303010
170	2	Sl. Pan Head Screw	M4x6		0304006
175	5	Pan Head Tapping Screw	F3,9x19 (BZ)		0539019
180	2	Pan Head Tapping Screw	F3,9x13 (BZ)		0539013
185	2	Curved Spring Washer	A4		1804137
190	2	Locking Washer	SM6		1806000
195	8	Locking Washer	SM5		1805000
200	1	Medium Washer	4,3x8x0,5 Ms		1804433
210	1*	Cord cpl. with male insert, Fig. 225,235,240,245	6G1,5x4,4 5P		8744153
	1	Cord cpl. with male insert, Fig. 225,235,240,245,298	6G1,5x4,4 10P		8744510
220	1	Switch Strand	1,5²x200		8715202
	2*	Switch Strand	1,5²x290		8715290
225	1	Cord Sleeve	D12		8701200
227	1	Handle for Socket Case			8006001
230	1	Motor Switch			8010201
235	1	Cord Gland	M20x1,5 7-13		8820152
240	1	Cord Gland	M20x1,5 6x2,5		8862520
245	1*	Hood	3A EMV		8020103
	1	Hood	6B EMV		8016106
249	1	Terminal Block cpl. with marking (fig.250,255,260)			7924300
250	1	End Terminal Block with Fixing Flange			7924301
255	4	Center Terminal Block			7924321
260	1	End Plate with Fixing Flange			7900361
265	1	Cord Clamping Piece			8800010
270	1	Angle Screwing	G 1/4"		7015010
275	1	Socket			7014026
280	1	Quick Connect Nipple			DK20225
285	2	Hose Piece cpl. with nipples			DK30235
290	1	Ball Valve			7014041
295	7	Sealing Ring	G1/4"		7014003
298	1	Protective Hood			8016504

**Spare Parts Price List - Diamond - Disc Saw  
Type TS 40 - Gear**

FIG	NO	DESCRIPTION	STANDARD	TYPE	PART NO
300	1	Gear Box			TS40201-1
302	1	Bearing Hood cpl. with Pos. 350,355,425,430,455,460,485			TS40203C
304	1	Handle cpl.			TS40205-1C
305	1	Spindle			TS40206
310	1	Pinion Shaft			TS40208
315	1	Spur Wheel			TS40209
316	1	Sleeve			TS40210
320	1	Spindle Flange			TS40214-1
325	1	Spindle Wheel			TS40215
330	1	Blade Flange			TS40216
335	1	Pressure Disk			TS40219
340	2	Shaft Wearing Sleeve			TS40220
345	1	Fixing Sleeve			HS40222
350	1	Locking Knob			DK11223
355	1	Locking Pin			TS40224
360	1	Supporting Disk			TS40230
365	1	Valve Shaft			HS40232
370	1	Cap Nut			HS40234
375	1	Sealing Sleeve			HS40236
385	1	Bearing Ring			TS40248
390	1	Handle Axle			TS40250
395	1	Distance Sleeve			TS40254
405	1	Stop Sleeve			TS40258
410	2	Adjust Sleeve			TS40280-1
414	1	Handle			8900014
415	1	Ball Bearing	6004 2RS		6060044
420	1	Ball Bearing	6004		6060040
425	1	Needle Bush	HK1212		6312120
430	1	O-Ring	RDR60x2		5560002
435	1	O-Ring	RDR42x2		5542002
440	2	O-Ring	RDR32x1,5		5532015
450	1	O-Ring	RDR8x2		5508002
455	1	O-Ring	RDR7x1,5		5507015
460	2	O-Ring	RDR6x1		5506001
465	2	Rotary Shaft Seal	RWD20x32x7A Niro		5020320
470	1	Rotary Shaft Seal	RWD16x30x7A		5016301
	1*	Rotary Shaft Seal	RWD16x30x7A		5016307
475	1	Rotary Shaft Seal	RWD28x35x4		5028354
	1*	Quad-Ring	28x29,7x3,5		5028293
480	1	Pressure Spring	2,0x12,5x22,5		4320225
485	1	Pressure Spring	0,8x5x17,5		4308175
490	1	Parallel Key	A5x5x12		3005012
495	1	Parallel Key	A5x5x10		3005010
500	1	Shim Ring	PS42x52x1		1942521
505	1	Shim Ring	PS8x14x1		1908141
510	1	Retaining Ring	13x1		3513001
515	1	Retaining Ring	16x1		3516001
520	2	Retaining Ring	20x1,2		3520012
525	1	Retaining Ring	42x1,75		3542175
530	1	Tapered Retaining Ring	JB62x2,05		3462205
535	1	Hexagon Head Screw			TS40276
540	2	Hex. Socket Head Screw	M6x20		0106020
545	1	Hex. Socket Head Screw	M5x50		0105050
550	1	Cheese head screw	M3x8		0303008
555	7	Count. Head Screw	M5x16		0405016
560	1	Hexagon Nut with prevailing torque insert	M8		1008985
565	1	Medium Washer	8,4x21x4		1821844
568	1	Medium Washer	6,4		1806125
570	2	Locking Washer	SM6		1806000
575	1	Locking Washer	SM5		1805000
580	1	Angle Quick Connect Nipple	G1/4"/8		7014868
585	1	Toggle Grip	M3		2703220
590	1	Wing Nut	M6		1006315
595	1	Cam Lever cpl. with Pressure Disc	M8		2708158
598	1	Pressure Disc			2708003
599	1	Gear Oil	90ml		9009004

## Spare Parts Price List - Diamond - Disc Saw Type TS 40 - Blade Guard

FIG	NO	DESCRIPTION	STANDARD	TYPE	PART NO
600	1	Blade Guard cpl. with Pos. 630-695, 395			TS40302-1C
	1*	Blade Guard cpl. with Pos. 625-695			TS40302C
625	1*	Blade Guard Cover			TS40304
630	1	Locking Gib			TS40308
633	3	Reinforcing Rib			TS40318
635	4	Distance Sleeve			TS40324
640	1	Splash Guard			TS40328
645	1	Clamping Plate			TS40332
655	1	Reinforcement Ring			TS40242
660	1*	O-Ring	RDR60x2		5560002
665	4	Hex. Socket Head Screw	M5x12		0115012
670	1	Mushroom Head Square Neck Bolt	M6x60		0506060
675	4	Count. Head Screw	M5x10		0405010
	7*	Count. Head Screw	M5x10		0405010
676	3	Th. Roll. Counter Sunk Screw	M5x12		0405112
678	6	Th. Roll. Cheese Head Screw	M5x8		0505008
680	2	Slotted Cheese Head Screw	M5x10		0205010
685	8	Hexagon Nut	M5		1005000
	11*	Hexagon Nut	M5		1005000
695	4	Locking Washer	SM5		1805000

## Spare Parts Price List - Diamond - Disk Saw Type TS 40 - Equipment

FIG	NO	DESCRIPTION	STANDARD	TYPE	PART NO
	1	Accessory kit - flush			TS4030
	1	Distance Disc			TS40213-2
	1	Nozzle Screw			TS40276.1
	6	Count. Head Screw	M6x18		0406018
	1	Wrench	SW32		9889432

Attention: until serial number 0315028 the blade guard must be changed against TS40302-1C and the spindle flange TS40214, additionally.

## Spare Parts Price List - Diamond - Disk Saw Type TS 40 - Special Parts

FIG	NO	DESCRIPTION	STANDARD	TYPE	PART NO
	1	Male Insert without Male Contacts	10P		8016312
	5	Male Contact	1,5 <sup>2</sup>		8016815
	1	Coding Bridge			TS40540
	1	Face Pin Wrench	50x5		9800505
	1	Wrench	SW17		9889417

\* parts are substituted

The prices listed are gross prices in € per item, plus statutory Value added tax.

When ordering spare parts, please always state: machine number, quantity, designation, spare part number and, for electrical parts, the nominal voltage (if different from 230 V).

WEKA Elektrowerkzeuge KG, Auf der Höhe 20, D 75387 Neubulach - Altbulach  
 Telephone: +49 7053 96816-0, spare parts: +49 7053 96816-14 · Telefax: +49 7053 3138  
 Internet: www.weka-elektrowerkzeuge.de · E-mail: weka@weka-elektrowerkzeuge.de

Subject to change