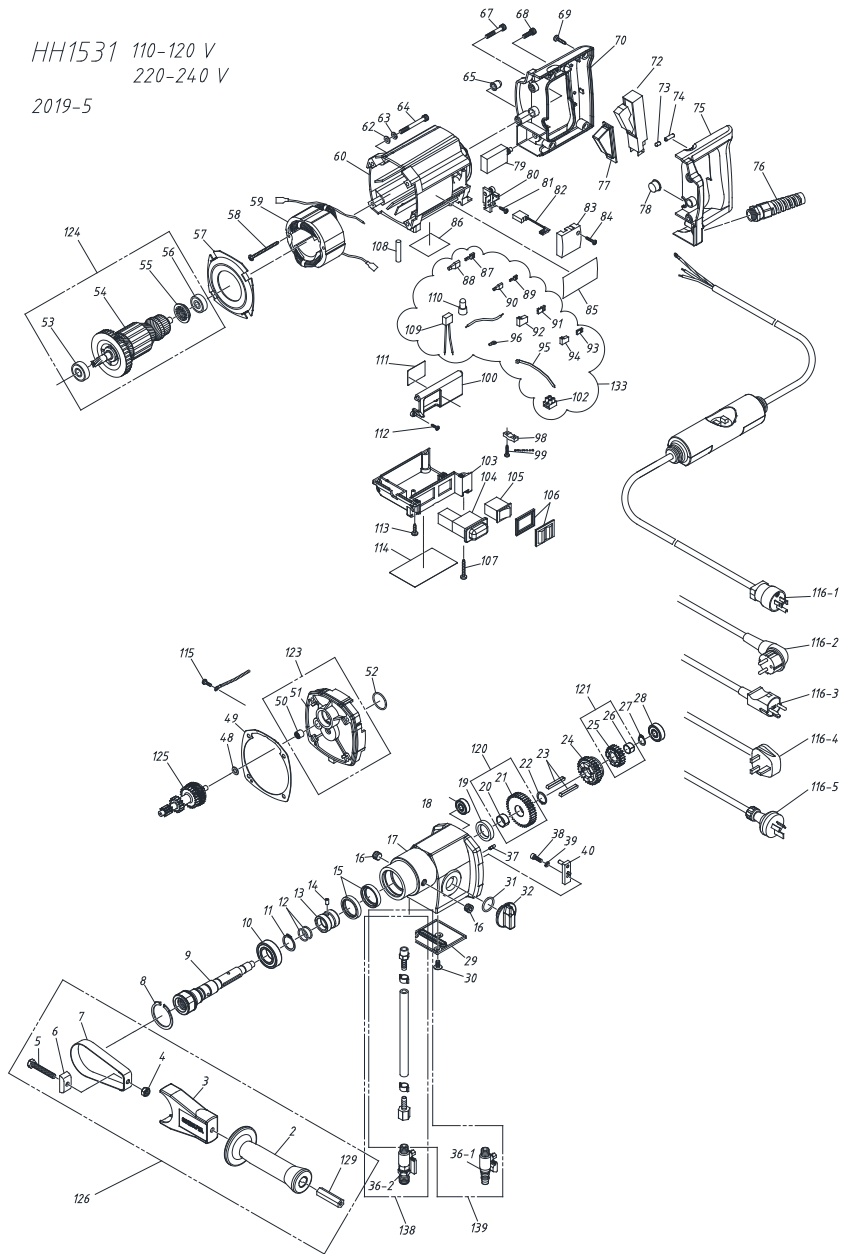


POS	PART NAME	NOTE	QTY	CPT. CODE	Compatibility with RH1531
2	HANDLE GRIP - SIDE HANDLE		1	044400	YES
3	HOLDER COVER		1	044401	YES
4	U-NUT	M8	1	000261	YES
5	HEX. BOLT	M8 x 50	1	044402	YES
6	NUT - SIDE HANLE		1	044403	YES
7	BAND - SIDE HANDLE		1	044404	YES
8	SNAP RING	IRTW-47	1	005432	YES
9	SPINDLE G 1/2		1	044405	YES
10	BALL BEARING	6005DDU	1	001694	YES
11	SNAP RING-C	25	1	000689	YES
12	O-RING	JASO 1019	2	005434	YES
13	SEAL RING		1	005435	YES
14	SPRING PIN	5 X 10AW (SUS)	1	005436	YES
15	OIL SEAL	MHSA30407 (SUS)	2	005437	YES
16	HEX SOCKET PLUG	1/4	2	000086	YES
17	GEAR CASE		1	052659	YES (Color is changed)
18	BALL BEARING	629ZZ	1	000022	YES
19	OIL SEAL	MHS22357	1	005439	YES
20	METAL BUSH	DUB1810	1	005440	YES
21	NO. 8 GEAR		1	044408	YES
22	SNAP RING-S	ISTW-18	1	005442	YES
23	PARALLEL KEY	5 X 5 X 40 (ROUND ENDS)	2	044409	YES
24	NO. 6 GEAR		1	044410	YES
25	NO. 4 GEAR		1	044411	YES
26	METAL BUSH	DUB1410	1	005445	YES
27	SNAP RING-C	14	1	005447	YES
28	BALL BEARING	6200ZZ	1	000030	YES
29	COVER		1	044412	YES
30	SCREW TRUSS	M6 x 12	3	044413	YES
31	O-RING	P22	1	044414	YES
32	SHIFTING KNOB		1	044415	YES
33	JOINT	AO-10	1	005413	YES
34	HOSE	DIA. 10 X 150	1	005448	YES
35	HOSE SOCKET	H6.5-G2F	1	005415	YES
36-1	WATER COCK -SHIBUYA	1/4-φ16	1	000061	YES
36-2	WATER COCK -GARDENA		1	044137	YES
37	GROOVED PIN	4 x 12	1	044416	YES
38	HEX. SOCKET BOLT	M5 X 16	1	044417	YES
39	SPRING WASHER	5	1	042180	YES
40	LEVER ASSY		1	044418	YES
48	SHIM RING		1	044424	YES
49	RUBBER GASKET		1	044924	YES
50	NEEDLE BEARING	TLA 810Z	1	044426	YES
51	GEAR CASE DIAPHRAGM		1	052658	YES (Color is changed)
52	O-RING	S28	1	044428	YES
53	BALL BEARING HP	6001RURUED-1	1	044429	YES
54-1	ARMATURE 110-120V		1		
54-2	ARMATURE 220-240V		1		
55	COLLAR		1	042152	YES
56	BALL BEARING	6200DDW	1	045620	YES
57	FAN CASING		1	042153	YES
58	TAPPING SCREW PAN HEAD	5 X 60	2	042154	YES
59-1	FIELD COIL 110-120V		1	052568	NO
59-2	FIELD COIL 220-240V		1	052585	NO
60	MOTOR HOUSING		1	052666	YES (Color is changed)
62	PLAIN WASHER	6	4	042157	YES
63	SPRING WASHER	2 - 6	4	042158	YES
64	HEX. SOCKET BOLT	M6 X 55	4	042159	YES
65	COVER FOR OVERLOAD	X 200 799 01	1	044432	YES
67	HEX. SOCKET BOLT	M6 X 30	2	042957	YES
68	HEX. SOCKET BOLT	M6 X 15	2	005288	YES
69	TAPPING SCREW PAN HEAD	5 X 20	4	042161	YES
70	GRIP-R		1	050270	YES
72-1	VARIABLE TRIGGER SWITCH 100-120V		1	050273	YES
72-2	VARIABLE TRIGGER SWITCH 220-240V		1	050272	YES
73	DUST PROOF RUBBER	C300-A-5-SI	1	044438	YES
74	AIR BUBBLE LEVEL	5S-100-01	1	044439	YES
75	GRIP-L		1	050271	YES
76	CABLE SLEEVE		1	052825	NO
77	DUST COVER - TRIGGER		1	050115	YES

HH1531 110-120V/220-240V SPARE PARTS PRICE LIST WITH PRICE 1/2

POS	PART NAME	NOTE	QTY	CPT. CODE	Compatibility with RH1531
78	AIR BUBBLE LEVEL (ROUND)	1K-202-01	1	044442	YES
79-1	OVERLOAD SW. 110-120V	15A	1	044443	NO
79-2	OVERLOAD SW. 220-240V	7A	1	044445	YES
80	BRUSH HOLDER		2	042162	YES
81	SCREW TRUSS PC	4 X 14	2	042163	YES
82	CARBON BRUSH		2	049626	YES
83	BRUSH COVER		2	051929	YES (Color is changed)
84	TAPPING SCREW PAN HEAD	4 X 20	2	042166	YES
85	LABEL		1	052181	NO
86-1	SERIAL LABEL (S) 110-120V		1	052664	NO
86-2	SERIAL LABEL (S) 220-240V		1	052665	NO
87	FASTEN TERMINAL 250	OTP-225032-2	3	000057	YES
88	CAP 250	238035-09	3	000056	YES
89	FASTEN TERMINAL 187		6	044449	YES
90	CAP 187		6	044450	YES
91	FASTEN TERMINAL FLAG 250		1	043124	YES
92	CAP FLAG 250		1	043125	YES
93	FASTEN TERMINAL FLAG 187		2	044451	YES
94	CAP FLAG 187		2	044452	YES
95	CABLE TIE	AB-100	2	005990	YES
96	TERMINAL W/INSULATION	FV1.25-M4	2	044453	YES
98	CORD FIXER		1	042177	YES
99	TAPPING SCREW PAN HEAD	4 X 16	2	005495	YES
100	COVER SWITCH BOX		1	044455	YES
102	TERMINAL	2P	1	001920	YES
103	SWITCH CASE		1	044458	YES
104-1	CIRCUIT PROTECTOR 110-120V	16A	1	042748	NO
104-2	CIRCUIT PROTECTOR 220-240V	7A	1	042243	YES
105	ROCKER SWITCH	JW-L22RKK-VDE	1	044459	YES
106	DUST COVER	AT-4126	1	044460	YES
107	TAPPING SCREW PAN HEAD	5 X 45	2	044461	YES
108	INSULATION TUBE	DIA. 8 X 40	1	042174	YES
109	CONDENSER	0.1 μ F	1	000059	YES
110	CLOSED END CONNECTOR	5.5SD	2	000055	YES
111	INSTRUCTION LABEL		1	044462	YES
112	TAPPING SCREW PAN HEAD	4 X 14	1	044463	YES
113	TAPPING SCREW PAN HEAD	5 X 16	2	043897	YES
114-1	SERIAL LABEL 110-120V		1		NO
114-2	SERIAL LABEL 220-240V		1		NO
115	SCREW PAN HEAD W/SW	M4 X 8	1	000706	YES
116-1	PLUG WITH CABLE & PRCD	110-120V US/TW	1	044469	YES
116-2	PLUG WITH CABLE & PRCD	220-240V EU/ASIA	1	042218	YES
116-3	PLUG WITH CABLE & PRCD	220-240V DK	1	042783	YES
116-4	PLUG WITH CABLE & PRCD	220-240V SA	1	050972	YES
116-5	PLUG WITH CABLE & PRCD	220-240V AU	1	051174	YES
120	NO.8 GEAR WITH METAL BUSH	20+21	1	044472	YES
121	NO.4 GEAR WITH METAL BUSH	25+26	1	044473	YES
123	DIAPHRAGM W/NEEDLE BEEARING	50+51	1	044475	YES
124-1	ARMATURE ASSY 110-120V	53+54+55+56	1	052667	NO
124-2	ARMATURE ASSY 220-240V	53+54+55+56	1	052668	NO
125	SLIP CLUTCH ASSY W/GEARS		1	044590	YES
126	SIDE HANDLE ASSY	2+3+4+5+6+7+129	1	044657	YES
129	LONG NUT	M8 L50 X 13	1	044911	YES
130	COIL SPRING	F7210 L130	1	044972	YES
133	LEAD WIRE SET		1	050307	YES
138	WATER HOSE ASSY GAREDNA - TRANSPARENT TYPE		-	049603	YES
139	WATER HOSE ASSY SHIBUYA - TRANSPARENT TYPE		-	049751	YES

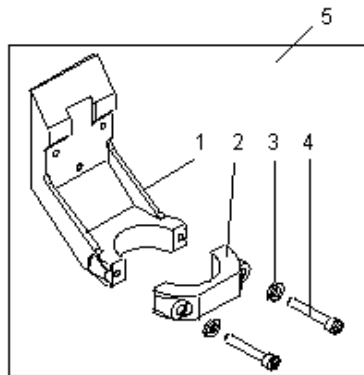
HH1531 110-120 V
220-240 V
2019-5



CLAMP RING SPACER

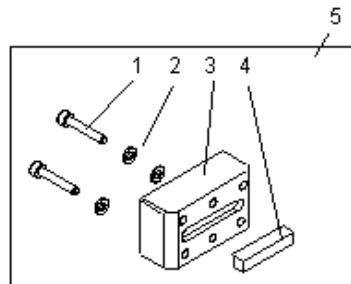
03.09.2019

POS	PART NAME	NOTE	QTY	CPT. CODE	Compatibility with old type spacer
1	SPACER BODY		1	052731	YES (Color is changed)
2	CLAMP FIXTURE		1	052733	YES (Color is changed)
3	PLAIN WASHER	8	2	000485	YES
4	HEX. SOCKET BOLT	M8 x 50	2	008061	YES
5	CLAMP RING SPACER CPL.		1	052933	YES (Color is changed)



BOLT-ON SPACER

POS	PART NAME	NOTE	QTY	CPT. CODE
1	HEX. SOCKET BOLT	M6 x 35	3	000307
2	SPRING WASHER	6	3	000083
3	SPACER BODY		1	044378
4	KEY		1	000454
5	BOLT-ON SPACER CPL.		1	044390

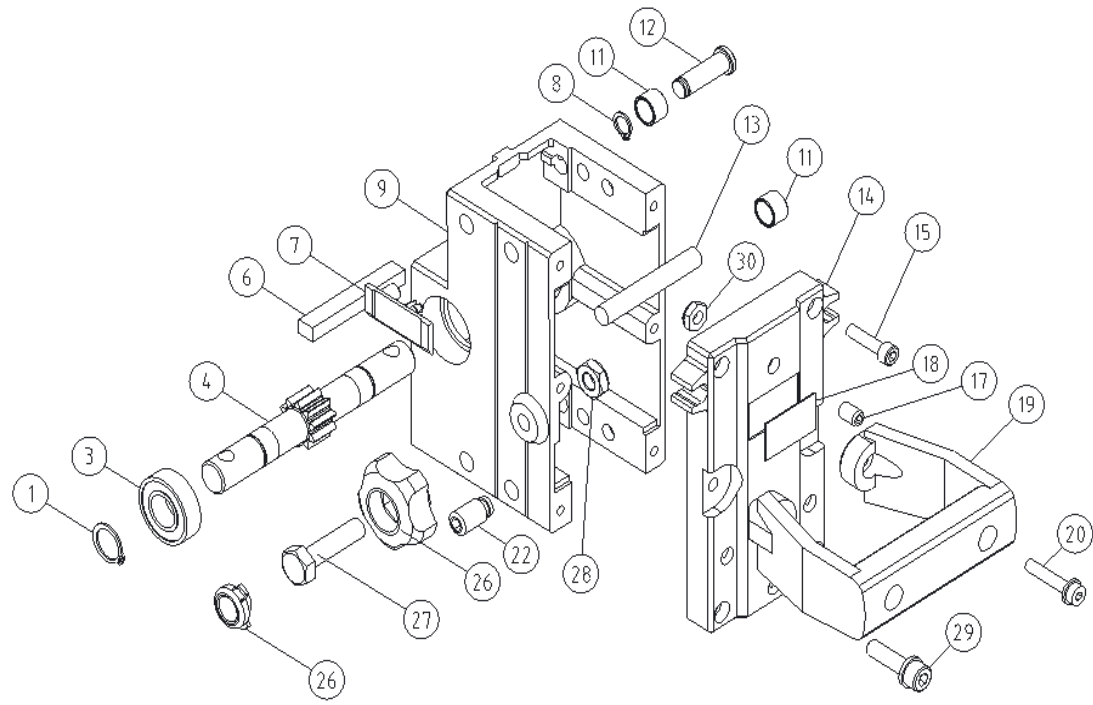


CARRIAGE BLOCK FOR H1511/H1521/H1522 SPARE PARTS LIST WITH PRICE

03.09.2019

POS	PART NAME	NOTE	QTY	CPT. CODE	Compatibility with TS-162 C.B.
1	SNAP RING-C	17	2	000272	YES
3	BALL BEARING	6003-2VU	2	048379	YES
4	PNION GEAR		1	051988	YES (See NOTE) *
6	PARALLEL KEY		1	042134	YES
7	SLIDING PLATE		2	042125	YES
8	SNAP RING-C	10	4	041411	NO
9	CARRIAGE BODY		1	052004	NO
11	ROLLER WITH BUSH		8	049273	YES
12	ROLLER SHAFT(F)		4	052005	NO
13	ROLLER SHAFT(R)		2	042129	YES
14	BACK COVER		1	042127	YES
15	HEX. SOCKET BOLT	M6 × 25	4	042131	YES
17	HEX. SOCKET SCREW	M8 × 12	2	042130	YES
18	WEIGHT LABEL		1		NO
19	GRIP HANDLE (RESIN)		1	042133	YES
20	HEX. SOCKET BOLT FLANGED	M6 × 30	2	042132	YES
22	HEX. SOCKET SCREW		2	042126	YES
26	STOPPER-KNOB	M10	1	042268	YES
27	HEX. BOLT	M10 × 40 (COPPER)	1	042267	YES
28	U-NUT	3-M10	1	043045	YES
29	HEX SOCKET BOLT W/SW	M8 × 30	3	042391	YES
30	U-NUT	3-M8	2	043293	YES
	CARRIAGE BLOCK CPL.			053019	YES

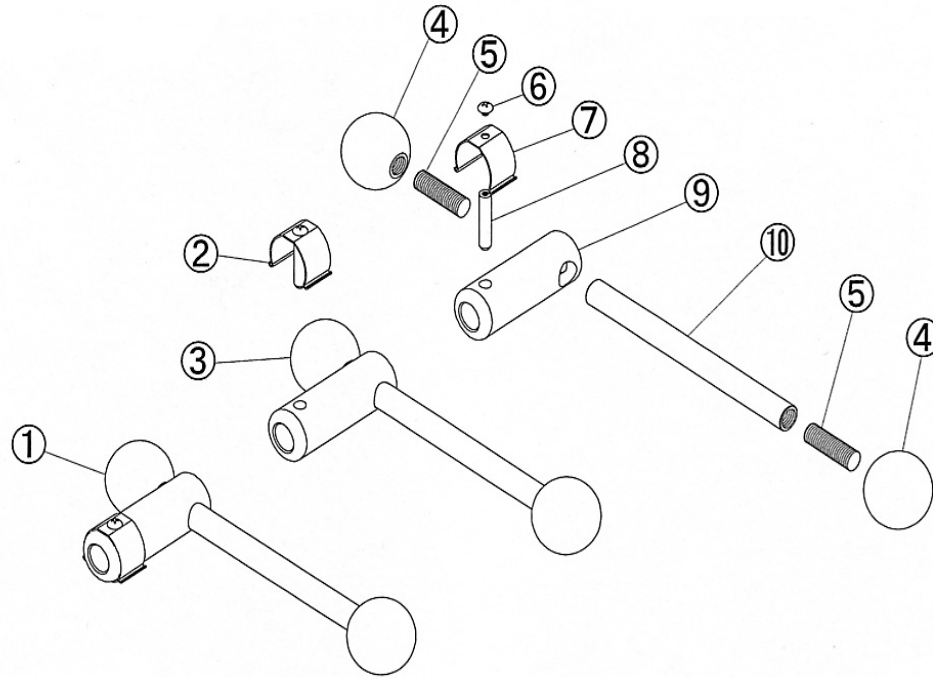
*NOTE: Attach #042121 Cover between Pos.1 Snap Ring-C and Pos.3 Ball Bearing when #042120 Pinion Gear is used.



QUICK RELEASE HANDLE SPARE PARTS LIST WITH PRICE

03.09.2019

POS	PART NAME	NOTE	QTY	CPT. CODE	Compatibility with TS-162 Q.R.Handle
1	Q.R. HANDLE CPL. (AL)		1	042076	YES
2	RETAINER COMPLETE		1	006095	YES
3	Q.R. HANDLE (AL) W/O RETAINER		1	042112	YES
4	GRIP BALL DIA. 45		2	042113	YES
5	THREADED BOLT	M12 × 40	2	042116	YES
6	SCREW	M5 × 6 (SUS)	1	006091	YES
7	SPRING		1	006092	YES
8	PIN		1	006093	YES
9	HANDLE BODY (AL)		1	042115	YES
10	HANDLE ROD (AL)		1	042114	YES

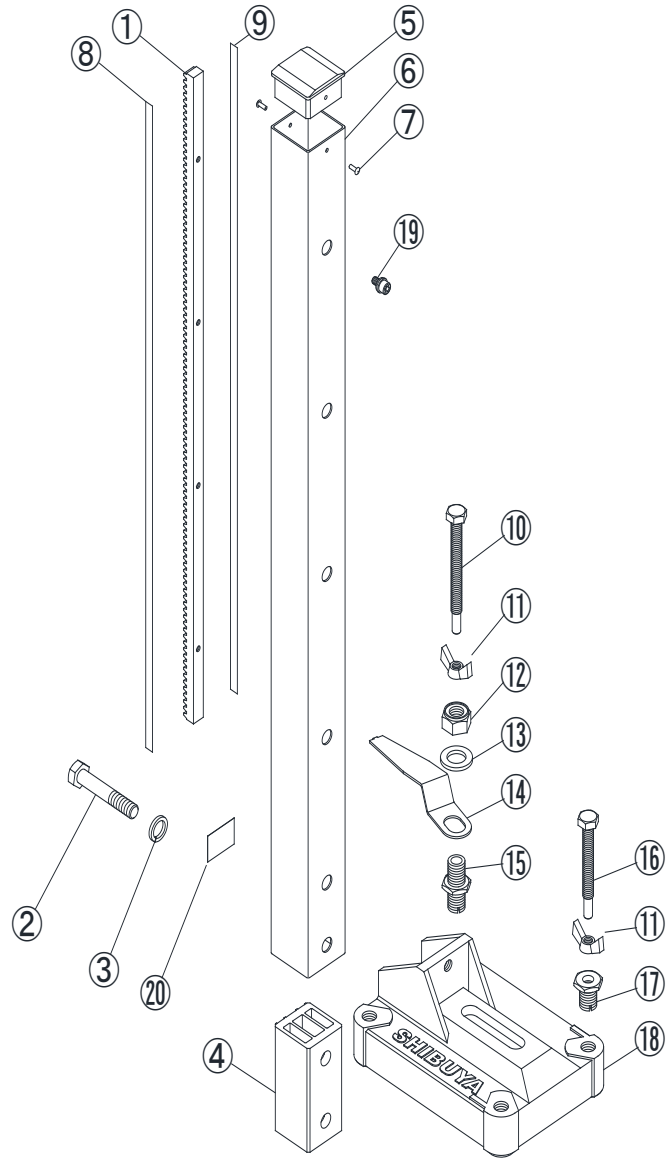


NOTE: No change.

TS-165 FIXED BASE +COLUMN 800L SPARE PARTS LIST WITH PRICE

03.09.2019

POS	PART NAME	NOTE	QTY	CPT. CODE	Compatibility with TS-162 Base & Column
1	RACK GEAR 800L		1	004688	YES
2	HEX. BOLT	M12 × 65	2	042097	YES
3	SPRING WASHER	2-12	2	042098	YES
4	INNER CORE		1	042106	YES
5	TOP PLATE		1	052016	YES (Color is changed)
6	COLUMN 800L		1	042271	YES
7	RIVET (AL)	NSA 4-4	2	042108	YES
8	DEPTH GAUGE DECAL (inch)	US VERSION ONLY	1	044497	YES
19	DEPTH GAUGE DECAL (mm)		1	000520	YES
10	LEVELING BOLT (F)		2	042094	YES
11	FLANGE NUT	2-M10	4	042096	YES
12	U-NUT	3-M16	2	042101	YES
13	PLAIN WASHER	POLISHED ROUND 16	2	042100	YES
14	BEAM		2	042099	YES
15	HEX. BOSS 2 (F)		2	042092	YES
16	LEVELING BOLT (R)		2	042095	YES
17	HEX. BOSS 2 (R)		2	042093	YES
18	BASE PLATE		1	042091	YES
19	HEX. SOCKET BOLT W/SW	M6 x 12	4	042357	YES
20	WEIGHT LABEL		1		
	COLUMN CPL. 800L		1	042269	YES
	COLUMN CPL. 800L US VERSION	US VERSION ONLY	1	051677	YES
	TS-165 BASE CPL.		1	042078	YES



AB52 SWIVEL BASE AND COLUMN L1000 SPARE PARTS LIST WITH PRICE

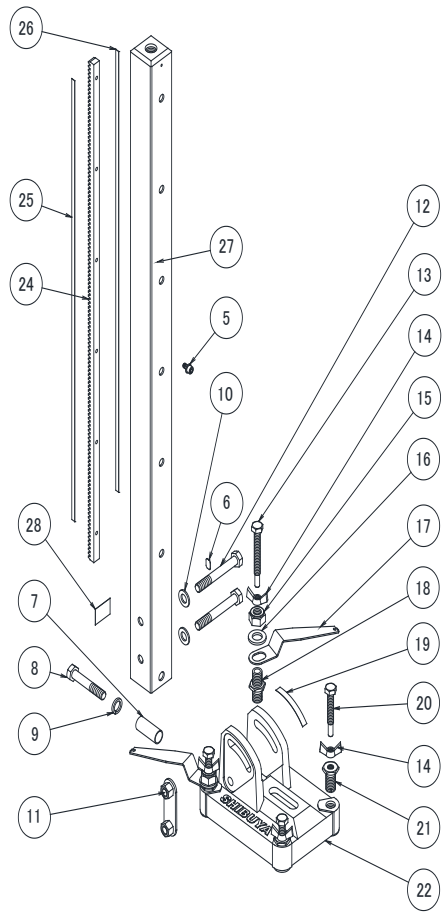
COLUMN

POS	PART NAME	NOTE	QTY	CPT CODE	Compatibility with TS-162 Column
5	HEX. SOCKET BOLT W/SW	M6 x 12	6	004672	YES
6	INDICATION LABEL		1	000732	YES
7	PIPE BOSS		1	005164	YES
24	RACK GEAR		1	004670	YES
25	DEPTH GAUGE DECAL (mm)		1	000520	YES
26	DEPTH GAUGE DECAL (inch)	US VERSION ONLY	1	044497	YES
27	COLUMN AB52 1000L M16		1	042929	YES
28	WEIGHT LABEL(AB52)		1		
	COLUMN CPL. 1000L FOR AB52		1	051682	YES
	COLUMN CPL. 1000L US VER. FOR AB52	US VERSION ONLY	1	051683	YES

BASE

POS	PART NAME	NOTE	QTY	CPT. CODE	Compatibility with old type AB52
8	HEX. BOLT	M12 x 70	1	042650	YES
9	SPRING WASHER	2-12	1	042098	YES
10	WASHER	φ 12.5 x φ 28 x t3.2	2	042826	YES (See NOTE)
11	PLATE (N)		1	052533	NO
12	HEX. BOLT	M12 x 90 (10.9)	2	042827	YES
13	LEVELING BOLT (F)		2	042094	YES
14	FLANGE NUT	2-M10	4	042096	YES
15	U-NUT	3-M16	2	042101	YES
16	PLAIN WASHER	POLISHED ROUND 16	2	042100	YES
17	BEAM		2	042099	YES
18	HEX. BOSS 2 (F)		2	042092	YES
19	ANGLE SCALE		1	006478	YES
20	LEVELING BOLT (R)		2	042095	YES
21	HEX. BOSS 2 (R)		2	042093	YES
22	BASE PLATE		1	042828	YES
	AB52 SWIVEL BASE CPL.		1	042796	YES

*NOTE : Quantity is changed from 4 to 2 pcs. Pos.11 Plate (N) does not need to use with Pos.10 Washer.



TS-165 BASE AND COLUMN 600L+200L SPARE PARTS PRICE LIST

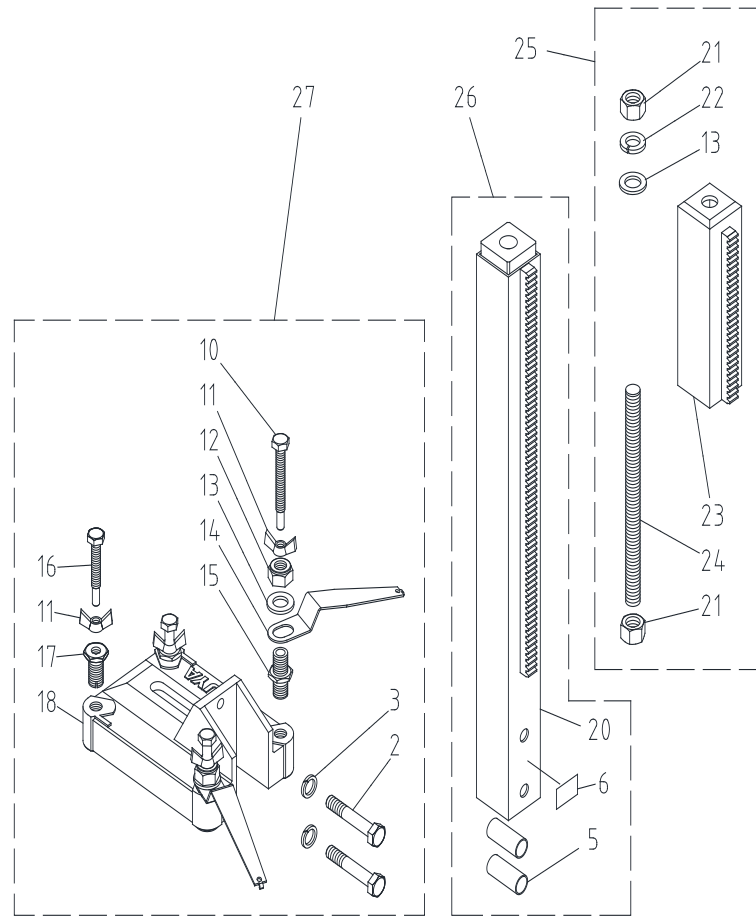
FOR BASE

03.09.2019

POS	PART NAME	NOTE	QTY	CPT CODE	Compatibility with TS-162 Base
2	HEX. BOLT	M12 x 65	2	042097	YES
3	SPRING WASHER	2-12	2	042098	YES
10	LEVELING BOLT(F)		2	042094	YES
11	FLANGE NUT	2-M10	4	042096	YES
12	U-NUT	3-M16	2	042101	YES
13	PLAIN WASHER	POLISHED ROUND 16	2	042100	YES
14	BEAM		2	042099	YES
15	HEX. BOSS 2(F)		2	042092	YES
16	LEVELING BOLT(R)		2	042095	YES
17	HEX. BOSS 2(R)		2	042093	YES
18	BASE PLATE		1	042091	YES
27	TS-165 BASE CPL.		1	042078	YES

FOR COLUMN

POS	PART NAME	NOTE	QTY	CPT CODE	Compatibility with TS-162 Column 600L
5	PIPE BOSS		2	005164	YES
6	WEIGHT LABEL		1		
20	COLUMN W/RACK		1	043474	YES
13	PLAIN WASHER	POLISHED ROUND 16	1	042100	YES
21	HEX. NUT	1-M16	2	042967	YES
22	SPRING WASHER	2-16	1	043393	YES
23	COLUMN EXTENSION		1	043475	YES
24	THREADED ROD	M16 x 230	1	043394	YES
25	EXTENSION COLUMN CPL. 200L	13+21+22+23+24	1	043484	YES
26	COLUMN CPL. 600L	5+6+20	1	043482	YES
	COLUMN CPL. 600L WITH EXTENSION 200L FOR TS-165 (POS.25+26)		1	043477	YES



AB52 SWIVEL BASE AND COLUMN 600L+200L SPARE PARTS PRICE LIST

FOR AB52 SWIVEL BASE

03.09.2019

POS	PART NAME	NOTE	QTY	CPT CODE	Compatibility with old type AB52
9	HEX. BOLT	M12 × 70	1	042650	YES
10	SPRING WASHER	6-12	1	042098	YES
11	WASHER	φ 12.5 × φ 28 × t3.2	2	042826	YES (See NOTE) *
12	PLATE (N)		1	052533	NO
13	HEX. BOLT	M12 × 90 (10.9)	2	042827	YES
14	LEVELING BOLT(F)		2	042094	YES
15	FLANGE NUT	2-M10	4	042096	YES
16	U-NUT	3-M16	2	042101	YES
17	PLAIN WASHER	POLISHED ROUND 16	2	042100	YES
18	BEAM		2	042099	YES
19	HEX. BOSS 2(F)	S408713	2	042092	YES
20	ANGLE SCALE		1	006478	YES
21	LEVELING BOLT(R)		2	042095	YES
22	HEX. BOSS 2(R)		2	042093	YES
23	BASE PLATE		1	042828	YES
35	AB52 SWIVEL BASE CPL.		1	042796	YES

*NOTE : Quantity is changed from 4 to 2 pcs. Pos.11 Plate (N) does not need to use with Pos.10 Washer.

FOR COLUMN

POS	PART NAME	NOTE	QTY	CPT CODE	Compatibility with TS-162 Column 600L
6	INDICATION LABEL		1	006477	YES
7	WEIGHT LABEL		1		
8	PIPE BOSS		1	005164	YES
28	COLUMN W/RACK FOR AB52		1	043476	YES
17	PLAIN WASHER	POLISHED ROUND 16	1	042100	YES
29	HEX. NUT	1-M16	2	042967	YES
30	SPRING WASHER	2-16	1	043393	YES
31	COLUMN EXTENSION		1	043475	YES
32	THREADED ROD	M16 × 230	1	043394	YES
33	EXTENSION COLUMN CPL. 200L	17+29+30+31+32	1	043484	YES
34	COLUMN CPL. 600L	6+7+8+28	1	043483	YES
	COLUMN CPL. 600L WITH EXTENSION 200L FOR AB52 (POS.33+34)		1	043478	YES

