



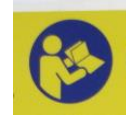
# **OPERATING MANUAL**

## **Electric floor saw GS675**

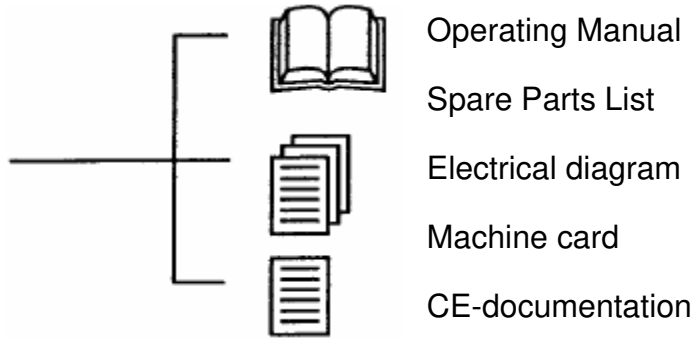
A2012 29 Nov 2012



# Electric Floor Saw GS675



Enclosed with the machine you will find the following documents. They should be read and understood by every one, who intending to operate this machine

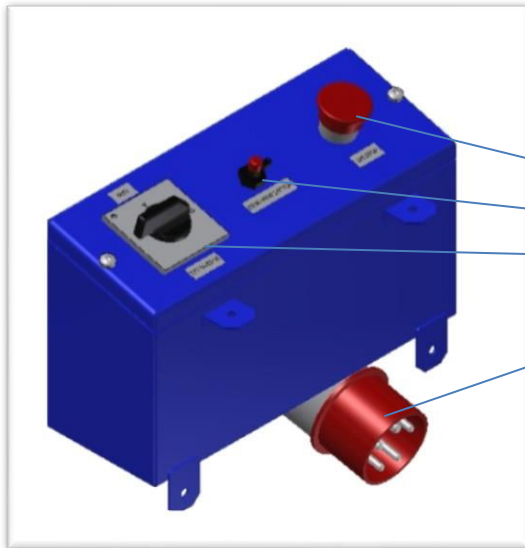


## 1.0 Technical information:

Technical data	GS675
Motor output	7,5 kW / 10 hp
Electricity	400V – 16A
Blade guard	Ø 600 mm
Cutting depth (maximum)	230 mm
Blade shaft	1750 rpm
Blade flange connection	Ø 25,4 or 60 mm
L x W x H	1000 x 630 x 1000 mm
Weight	125 kg

This model has a 7,5 kW electric motor and a blade shaft capacity of 1750 Rpm.  
The model is well suited for diamond blades between Ø 500 and maximum Ø 600

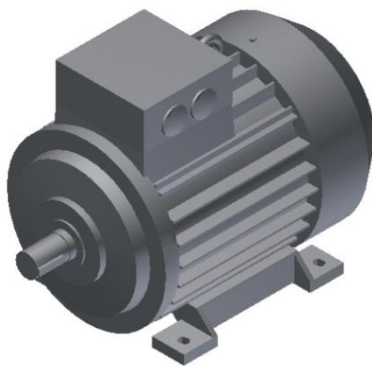
## 2.0 Electrical system



- Emergency stop
- Dead man knob
- Star/delta triangle stater
- Input plug – contactor 4/5 plug  
Reversing switch is inside the plug

**Do never operate inside the electrical system, without to be sure that the machine is unplugged – electricity disconnected.**

### **Electrical motor:**



- **EI motor 7,5 Kw (10Hp)**
- **3 phase – Thermic protection PTC**
- **14750 Rpm**
- **Currency 400/690V**
- **Currency 230/400V - (N)**
- **50Hz**
- **Torque 65Nm**
- **IE 2 motor**

Always keep the motor clean in order to get maximum output and effect. Too much dust and concrete slag may reduce the air cooling and cause overheating

## 2.1 How to operate the electrical switch box

Test procedures for start and stop:



All covers and guards are mounted on the machine.  
No tools/diamond blade is connected on the blade shaft  
That the movable frame is positioned to lowest level  
Always stand behind the machine when testing or working/operating the saw.



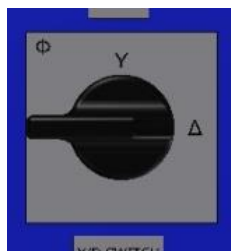
Connect the power supply to the input plug under the switch box.

Be sure to use a safety cable with undamaged plug.

Pull the emergency stop into the operating position. Twist it in right direction.

The reversing switch is inside the plug, Phase direction changes to turn the phase switch inside the plug

The star delta triangle switch has three positions:



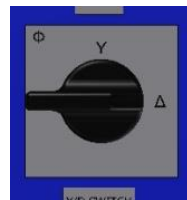
- 0 Start position.
- Y indicates motor starts
- Δ Working position – all 3 phases
- Wait 5 to 6 seconds before you turn the switch to Δ

## 2.2 Test procedure

- Turn the star delta triangle - starter to position Y to start the machine. Keep the switch in this position. Wait 5 - 6 seconds until the motor has reached its maximum speed.
- Turn the star delta switch to triangle -  $\Delta$  - the working position. Let the motor run for a while. Look and listen to ensure that everything works perfectly.
- **Note which direction the motor and blade shaft is running.**
- Turn the star delta triangle switch back to 0 position. The motor will stop.
- Always use this procedure for start and stop the floor saw

To check the emergency stop. Start the machine. When the machine is running, push down the emergency stop button. The machine must stop immediately

If any problem occurs with this test, call for assistance. Do not open the electrical system. Touching the components inside the electrical system can cause serious damage and this confirms the emergency stop is safely operational.



**Use the star/delta triangle starter for “START and STOP”**

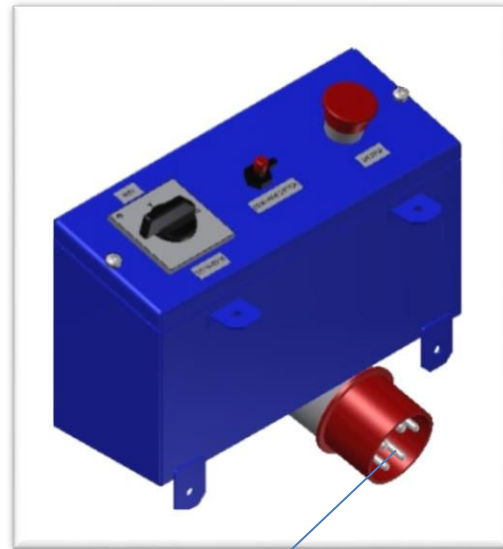
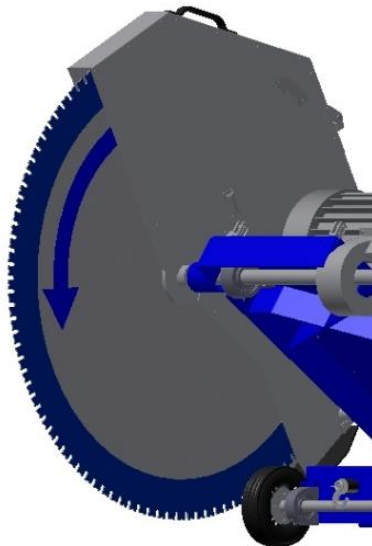


**Red button – EMERGENCY STOP**

### **Emergency stop:**

Pull down the EMERGENCY STOP and all current is automatically shot down

### 3.0 Correct motor rotational direction



The blade shaft must always run forward.

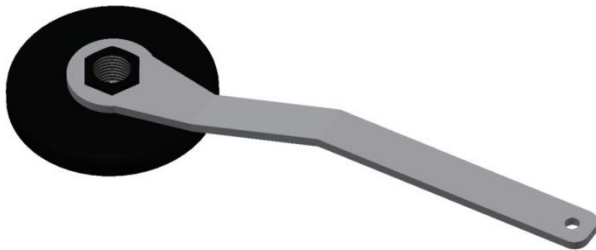
Phase switch/inverter is inside the plug

Every section of the start and stop procedures, must be carried out every time the machine is moved to a new job site.

Carry out these procedures:

- When you have connected the electricity to the switch box, and when you have relocated to another working site with another electrical power supply.

## 4.0 SUNDT Hexagon flanges



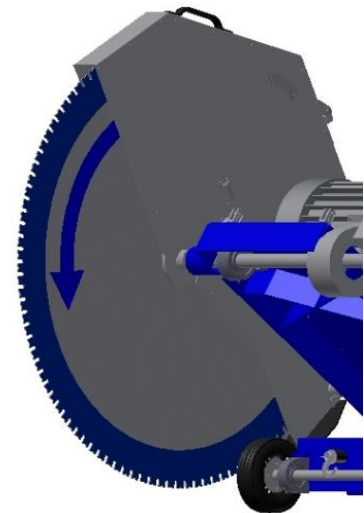
Sundt Hexagon wrench



Hexagon Blade flange Ø90  
Right side left tread  
Left side right tread

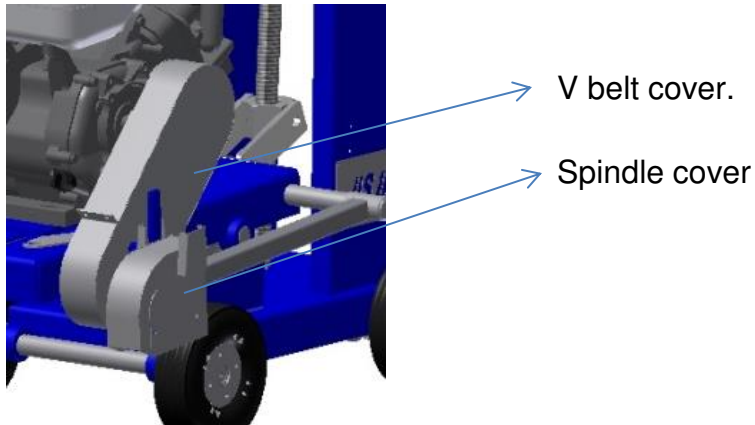
This GS675 model are equipped with our new “Sundt hexagon flange system. All GS675 models has the same size – Ø90 flanges. Inside the frame, you will find the hexagon wrench. Be aware off:

- Blade flanges has different treads
  - Right side left tread
  - Left side right tread
  
  - The blade is correct mounted on the shaft
  - Electricity is correct plugged
  - All covers are mounted
  - Connect the “dead man nob” to your self
  - Dead man nob cut all current, and the machine Will stop, if something happens, occurs with you as an operator of the saw
- For your own, and others safety, we recommend that this always is carried out, before
- Start the saw with the “Star/Delta switch”
  - Y indicates motor starts
  - Wait 5-7 seconds before you turn to
  - Δ position – all 3 phases
  - Motor is now running correctly.
  - Start the sawing operation
  - Penetrate the blade into the concrete

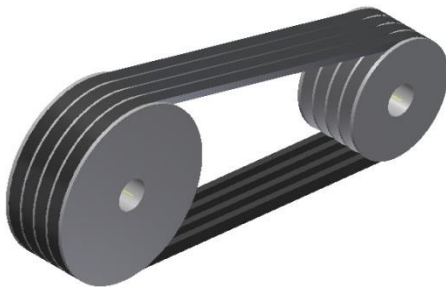


## 4.1 V- belt control

- Remove – disconnect the V belt cover.



- Check the V-belts after the first day's use and if necessary tightened properly.
- Check the V-belts periodically. Loose V-belts will reduce the output power and torque on the sawing spindle.
- If one V-belt breaks, change all of them.



When changing V-belts, make sure that the spindle, pulley and the motor are aligned perfectly.

Non-alignment will cause wear and tear on the new V-belts.

Tight the V - belts to a pressure = 1 cm

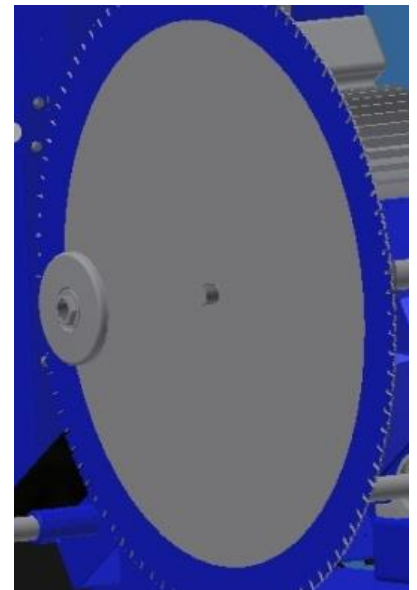


## 5.0 How to operate the Electric Floor Saw



Before you connect any tool, be sure you have carried out the test procedure, and you know that the shaft is rotating clockwise compared to the picture.

- The blade is correct mounted on the shaft
- Blade flanges has different treads
- Right side left tread
- Left side right tread
- Electricity is correct plugged
- All cover is mounted
- Connect the “dead man nob” to your self
- Dead man nob cut everything, and the machine Stop, if something happens with you as an operator. For your own, and others safety, we recommend that this always is carried out, before
- Start the saw with the “Star/Delta switch”
- Y indicates motor starts
- Wait 5-7 seconds before you turn to
- $\Delta$  working position – all 3 phases
- Motor is now running correctly.
- Start the sawing operation
- Penetrate the blade into the concrete
- The saw has a maximum cutting depth of 320mm
- Be enshure that you are using a blade who is correct.

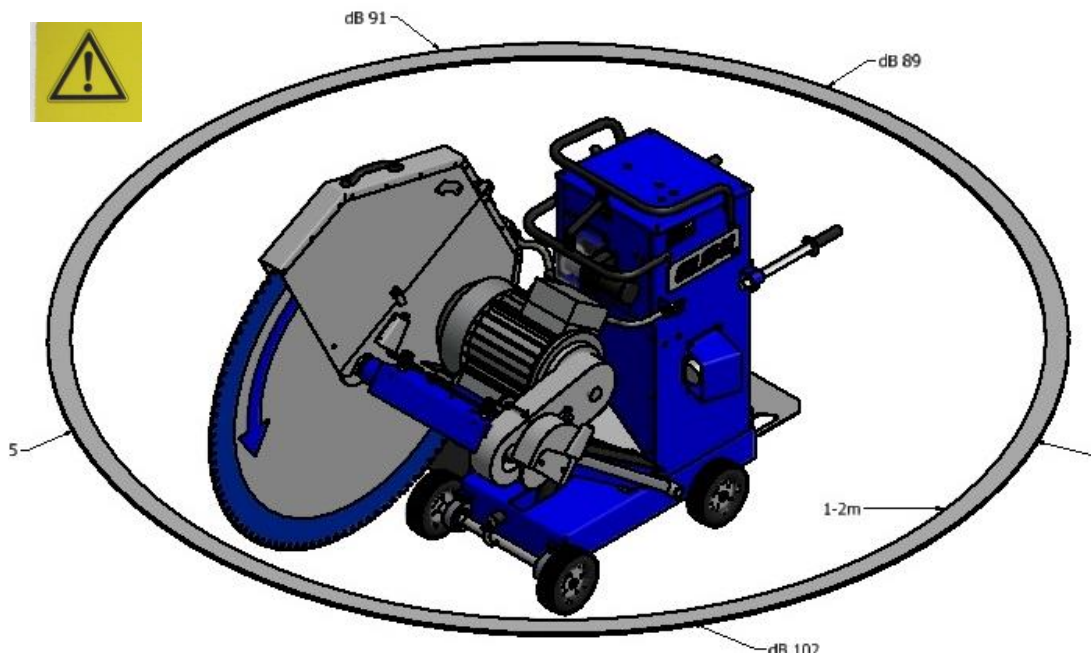


## 6.0 Protection

The drawing shows a typical average values of noise level in Leq (dB) measured in various directions at a distance of 1 - 2 m.

These measurements are taken under normal, typical operation with standard tools (blade) in normal concrete.

Please be aware that variations in tools (blade diameter) and other factors such as the composition of the material to be sawed, and the size and surface of the work area and the surroundings can all affect the noise level



**Be aware off the Noise level**

## 7.0 Protection

For your own safety we recommend that you always are using this protection:



Always use ear protection.



Operator must wear clothing appropriate to the work he/she is doing.



The working area must be completely cleared, all safety hazards removed.



All bystanders should leave the work area.



Use eye protection



Use gloves

**Do never operate inside the electrical system, without to be shore that the plug is disconnected**

## 8.0 Service

We recommend you to service your new electric floor saw, every time after use we recommend you to clean the machine, carefully with high pressure steamer. Clean all parts, the concrete slag stick to all parties, remove this slag fast as possible. The machine will last longer

- Service interval: Do service after every job.
- Clean the machine, feeding spindle, all protections.
- Your dealer will advise you
- Lubricate all rotating parts.
- Disconnect the tool.



- Spare part catalogue is always enclosed with the machine.

Information is also to be find at [www.sundt.as](http://www.sundt.as)



# OPERATING MANUAL

## Electric floor saw GS600



A2012

