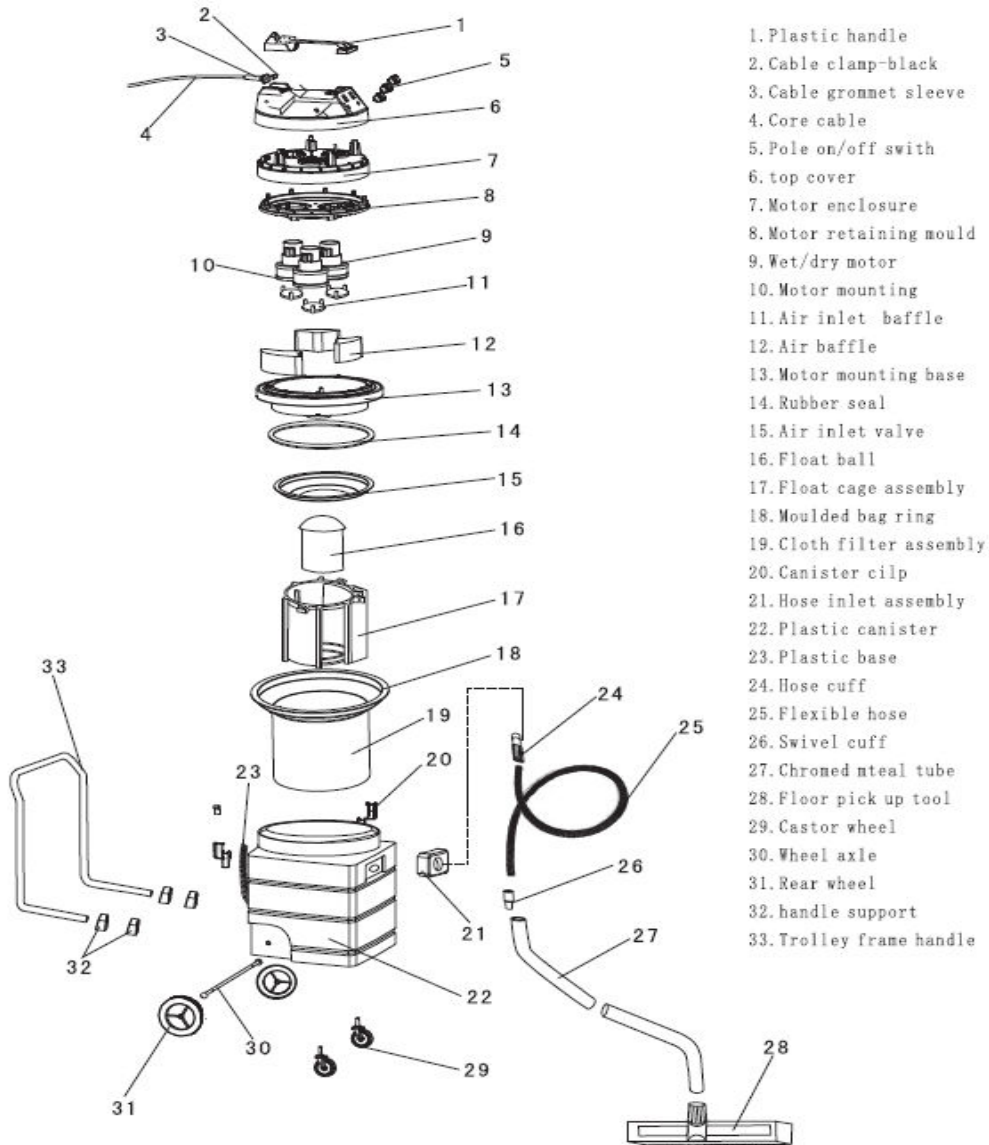


BF584A-3 EXPLODED VIEW



1. Plastic handle
2. Cable clamp-black
3. Cable grommet sleeve
4. Core cable
5. Pole on/off switch
6. top cover
7. Motor enclosure
8. Motor retaining mould
9. Wet/dry motor
10. Motor mounting
11. Air inlet baffle
12. Air baffle
13. Motor mounting base
14. Rubber seal
15. Air inlet valve
16. Float ball
17. Float cage assembly
18. Moulded bag ring
19. Cloth filter assembly
20. Canister clip
21. Hose inlet assembly
22. Plastic canister
23. Plastic base
24. Hose cuff
25. Flexible hose
26. Swivel cuff
27. Chromed metal tube
28. Floor pick up tool
29. Castor wheel
30. Wheel axle
31. Rear wheel
32. handle support
33. Trolley frame handle

P/N	Description	Unit	Price
1	Plastic handle	PC	US\$3.49
2	Cable clamp-black	PC	US\$0.32
3	Cable grommet sleeve	PC	US\$0.63
4	Core cable	PC	US\$19.00
5	Pole on/off switch	PC	US\$2.54
6	top cover	PC	US\$8.25
7	motor enclosure	PC	US\$12.70
8	Motor retaining mould	PC	US\$14.29
9	wet/dry motor	PC	US\$28.57
10	motor mounting	PC	US\$1.90
11	Air inlet baffle	PC	US\$0.48
12	Air baffle	PC	US\$2.38
13	Motor mounting base	PC	US\$15.10
14	Rubber seal	PC	US\$3.49
15	Air inlet valve	PC	US\$7.14
16	Float ball	PC	US\$5.56
17	Float cage assembly	PC	US\$10.31
18	Moulded bag ring	PC	US\$6.35
19	Cloth filter assembly	PC	US\$6.35
20	Canister clip	PC	US\$1.27
21	Hose inlet assembly	SET	US\$3.49
22	Plastic canister	PC	US\$47.62
23	Plastic base	PC	US\$5.56
24	Hose cuff	PC	US\$1.11
25	Flexible hose	PC	US\$8.58
26	Swivel cuff	PC	US\$1.11
27	Chromed metal tube	PC	US\$5.24
28	Floor pick up tool	PC	US\$4.44
29	Castor wheel	PC	US\$4.76
30	Wheel axle	PC	US\$6.35
31	Rear wheel	PC	US\$8.73
32	Handle support	PC	US\$0.79
33	Trolley frame handle	PC	US\$17.46