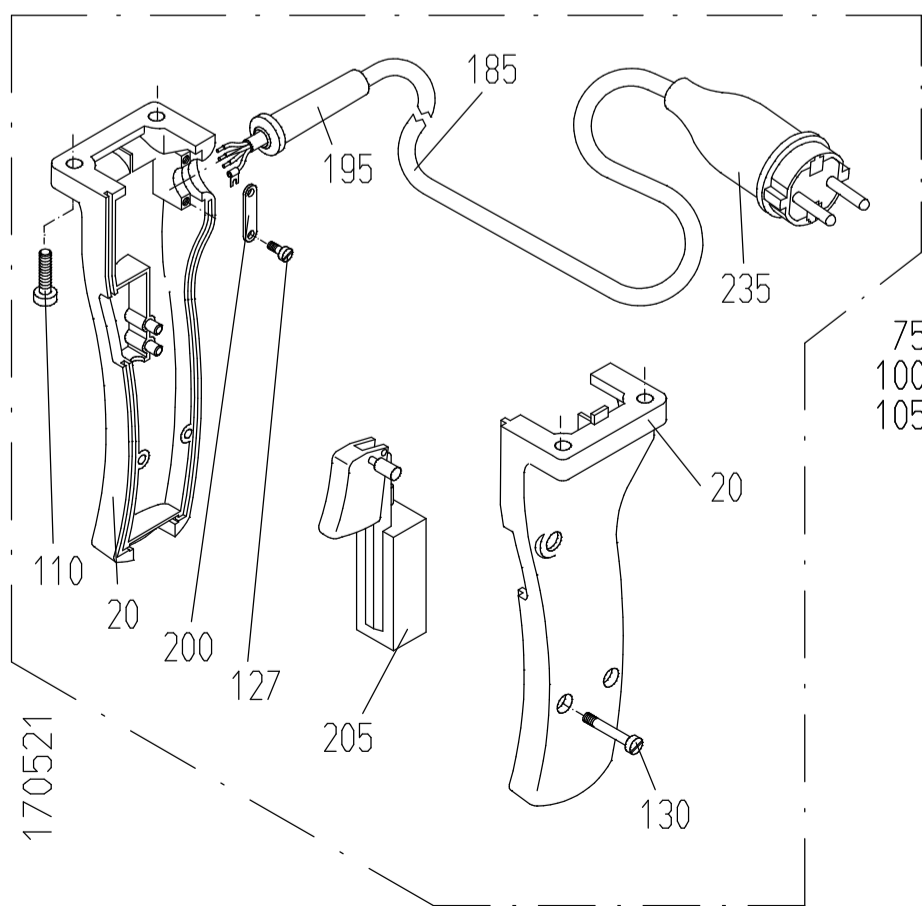
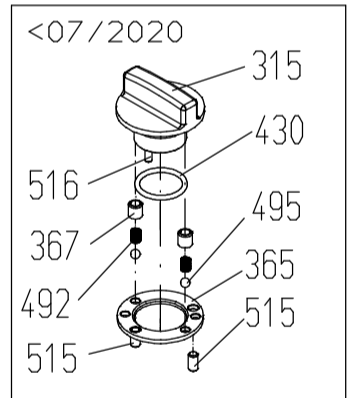
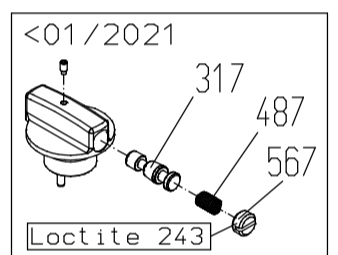
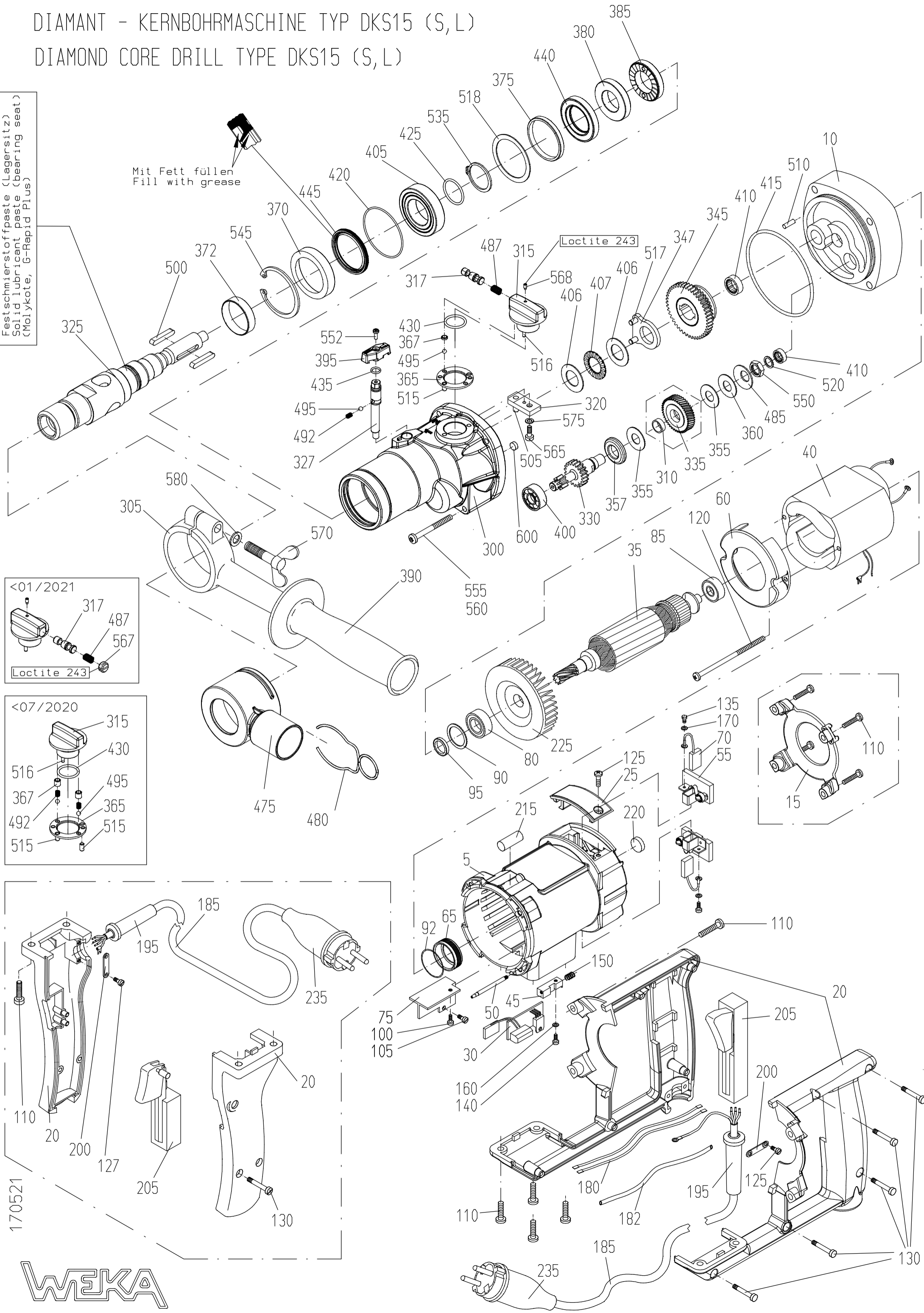


DIAMANT - KERNBOHRMASCHINE TYP DKS15 (S,L)
 DIAMOND CORE DRILL TYPE DKS15 (S,L)

Festschmierstoffpaste (Lagersitz)
 Solid lubricant paste (bearing seat)
 (Molykote, G-Rapid Plus)

Mit Fett füllen
 Fill with grease



170521



**Spare Parts Price List - Diamond Core Drill
Type DKS 15 - Motor**

EPE-DKS15 100123

FIG	NO	DESCRIPTION	STANDARD	TYPE	PART NO
5	1	Motorcase cpl. with Bearing Sleeve			DK15101C
10	1	Intermediate Flange with O-Ring			DK15102C
15	1	Protective Cover			DK15104
20	1	Rear Switch Handle			DK11105
	1	Switch Handle			DK12105
25	2	Brush Cover			DK15107
30	1	Electronic Module with Interference Suppression Capacitor		230V	DK15510-1C
	1	Electronic Module with Interference Suppression Capacitor		110V	DK15510/11-1C
35	1	Armature with Fan and bearings		230V	DK16108
	1	Armature with Fan and bearings		110V	DK16108/11
40	1	Field		230V	DK15109-1
	1	Field		110V	DK15109/11-1
45	1	PE-Block			DK15132
50	1	PE-Pin			DK15134
55	2	Brush Holder Segment			DK15117
60	1	Air Conducting Ring			DK15118
70	2	Carbon Brush		230 V	DK10125
	2	Carbon Brush		110 V	DK10125/11
75	1	Cooling Profile			DK10140
80	1	Ball Bearing			6060011
85	1	Ball Bearing			6060002
90	1	Compensation Washer			2628171
95	1	Rotary Shaft Seal	RWD12x24x7		5012247
100	1	Th. Roll. Cheese Head Screw	M4x8		0504008
105	1	Th. Roll. Cheese Head Screw	M4x6		0504006
110	8	Screw for Plastics, Hexal. Soc. Cheese Head	5,0x20		0550020
120	2	Pan Head Tapping Screw	4,2x90		0542090
125	2	Screw for Plastics, Hexal. Soc. Cheese Head	4x10		0540010
127	2	Pan Head Tapping Screw	3,9x13		0539013
130	2	Pan Head Tapping Screw	3,9x19	P-Handle	0539019
	5	Pan Head Tapping Screw	3,9x19	D-Handle	0539019
135	2	Fill. Head Screw	M3x5		0203005
140	1	Sl. Pan Head Screw	M4x6		0304006
150	1	Pressure Spring	0,63x5x8,5		4306385
160	1	Curved Spring Washer	A4		1804137
170	2	Medium Washer	3,2x6x0,5 Ms		1803433
180	2	Motor Strand	1,5 ² x220	230 V	8715240
	2	Motor Strand	2,5 ² x220	110 V	8725240
182	1	Insulating hose	9,0x160		9301160
185	1	Cord with Schuko-plug	3G1,5x3,8	230 V P-handle	8738159
	1	Cord with Schuko-plug	3G1,5x3,8	230V D-handle	8738158
	1	Cord 3G2,5x3,8		110 V P-Handle	8738251
	1	Cord 3G2,5x3,8		110 V D-Handle	8738252
195	1	Cord Sleeve			8701000
200	1	Cord Clamping Piece			8800010
205	1	Motor Switch		D-handle	8015211
		Motor Switch		P-handle	8015212
215	1	Tube Water-Level			7510025
220	1	Tin Water-Level			7500015
225	1	Fan			DK20105
235	1	Mains Plug (for PRCD)	Schuko	230V	8016013
	1	Mains Plug	CEE 32A 4h	110V	8032004
	1	Adhesive Sticker			DKS15620
	1	Carrying Case			DK10810

**Spare Parts Price List - Diamond Core Drill
Type DKS 15 - Gear**

FIG	NO	DESCRIPTION	STANDARD	TYPE	PART NO
300	1	Gear box cpl.with Fig. 600			DKS15201C
305	1	Clamp Ring cpl.with Fig. 570, 580			DK12202C
310	1	Bearing Socket			DK10221
315	1	Gear Change Grip with Fig. 317, 430, 367, 516, 568			DKS15203-2C
	1*	Gear Change Grip with Fig. 430, 367, 516		< 01/2021	DKS15203-1C
	1*	Gear Change Grip with Fig. 430, 367, 516		< 07/2020	DKS15203C
317	1	Locking pin			DKS15210-1
	1*	Locking pin		< 01/2021	DKS15210
320	1	Gear Change Lever with Fig. 505			DK30205C
	1*	Gear Change Lever with Fig. 505			DKS15205C
325	1	Drilling Spindle 1 1/4"			DKS15206
	1	Drilling Spindle FL28			DKS15206.5
327	1	Eccentric axis			DKS15748
330	1	Pinion shaft		DKS15	DKS15208
	1	Pinion shaft cpl. with Fig. 357		DKS15 L	DKS15208LC
	1	Pinion Shaft		DLS15 S	DKS15208S
335	1	Clutch Wheel cpl. with Fig. 310			DK12209C
345	1	Slide Gear Wheel cpl.		DKS15	DKS15214C
	1	Slide Gear Wheel cpl.		DKS15 L	DKS15214LC
	1	Slide Gear Wheel cpl.		DKS15 S	DKS15214SC
347	1	Support disc cpl. with Fig. 517			DKS15220C
355	2	Brake Disc			DK10218
357	1	Support Disc		DKS15 L	DKS15219L
360	1	Support Disc			DK10219
365	1	Locking Disc			DKS15207C
367	1	Sleeve for Gear Change Grip			DKS15242-2
	1*	Sleeve for Gear Change Grip		< 01/2021	DKS15242-1
	2*	Sleeve for Gear Change Grip		< 07/2020	DKS15242
370	1	Protective Sleeve			DKS15223
372	1	Protective Sleeve			DKS15222
375	1	Distance Sleeve			DKS15240
380	1	Toothed Disc Spindle Shaft		DKS15	DKS15230.20
				DKS15L	
	1	Toothed Disc Spindle Shaft		DKS15S	DKS15230.18
385	1	Toothed Disc Gear Box		DKS15	DKS15235.20
				DKS15L	
	1	Toothed Disc Gear Box		DKS15S	DKS15235.18
390	1	Handle			8900014
395	1	Turning knob			DKS15260
400	1	Ball Bearing	629		6062900
405	1	Ball Bearing	60/28 2RS		6060282
406	2	Thrust Bearing Washer			6517301
407	1	Thrust Needle Bearing			6517300
410	2	Needle Bush	HK1010		6310100
415	1	O-Ring	RDR78x2		5578002
420	1	O-Ring	RDR52x1,5		5552015
425	1	O-Ring	RDR24x2		5524020
430	1	O-Ring	RDR18x2		5518002
435	1	O-Ring	RDR7x1,5		5507015
440	1	Rotary Shaft Seal	AD28x47x7		5028477
445	1	Rotary Shaft Seal	AO38x48x4		5038484
475	1	Vacuum adapter			DKS15250
480	1	Locking Spring			DKS15772
485	1	Disc Spring			4028142
487	1	Pressure Spring	0,63x5,77x33		4306333
492	1	Pressure Spring	0,63x3,2x7,8		4306332
495	2	Ball	RB-4		2204000
500	2	Parallel Key	A5x5x30 hard.		3005031
505	1	Parallel Pin	5m6x15,3		2505015
	1*	Parallel Pin	5m6x16,8		2505016
510	1	Parallel Pin	4m6x10		2504010
515	1	Parallel Pin	4m6x8		2504008
516	1	Parallel Pin	3m6x16		2503016
517	2	Parallel Pin	5m6x12		2505012
518	1	Shim Ring	PS42x52x1,0		1942521
520	1	Shim Ring	PS10x16x1		1910161
535	1	Retaining Ring	28x1,5		3528015
545	1	Retaining Ring	52x2		3452002
550	1	Hexagon Nut	BM12x1,5		1012015
552	1	Fill.head screw, black	M3x8 sw		0303108
555	1	Screw for Plastics, Hexal. Soc. Cheese Head	5,0x84		0550084
560	3	Screw for Plastics, Hexal. Soc. Cheese Head	5,0x54		0550054

565	1	Hex. Soc. Head Screw Tuflok coated	M5x12		0125012	
	1*	Hex. Soc. Head Screw	M5x12	<10/2020	0105012	
567	1	Slotted Set Screw	M10x6		0710006	
568	1	Set Screw w. tap	M3x6		0703006	
570	1	Wing Screw	M6x40		0506040	
575	1*	Locking Washer	SM5	<10/2020	1805000	
580	1	Medium Washer	A 6,4		1806125	
600	1	Disc Magnet	8x3		7408003	
610	1	Gear Oil	100 ml		9009002	

*

Subject to change without notice